

**SPANXA1 Antibody (N-term)**  
**Purified Rabbit Polyclonal Antibody (Pab)**  
**Catalog # AP20710a**

**Specification**

---

**SPANXA1 Antibody (N-term) - Product Information**

Application	WB,E
Primary Accession	<a href="#">O9NS26</a>
Other Accession	<a href="#">O8TAD1</a> , <a href="#">O9BXN6</a> , <a href="#">O9NY87</a>
Reactivity	Human
Host	Rabbit
Clonality	Polyclonal
Isotype	Rabbit IgG
Calculated MW	11038
Antigen Region	2-36

**SPANXA1 Antibody (N-term) - Additional Information**

**Gene ID** 30014;728712

**Other Names**

Sperm protein associated with the nucleus on the X chromosome A, Cancer/testis antigen 111, CT111, Nuclear-associated protein SPAN-Xa, SPAN-X, SPANX-A, SPANX family member A, SPANXA1, SPANXA

**Target/Specificity**

This SPANXA1 antibody is generated from a rabbit immunized with a KLH conjugated synthetic peptide between 2-36 amino acids from the N-terminal region of human SPANXA1.

**Dilution**

WB~~1:1000

**Format**

Purified polyclonal antibody supplied in PBS with 0.09% (W/V) sodium azide. This antibody is purified through a protein A column, followed by peptide affinity purification.

**Storage**

Maintain refrigerated at 2-8°C for up to 2 weeks. For long term storage store at -20°C in small aliquots to prevent freeze-thaw cycles.

**Precautions**

SPANXA1 Antibody (N-term) is for research use only and not for use in diagnostic or therapeutic procedures.

**SPANXA1 Antibody (N-term) - Protein Information**

**Name** SPANXA1 ([HGNC:11218](#))

## Synonyms SPANXA

### Cellular Location

Cytoplasm. Nucleus. Note=Associated with nuclear craters

### Tissue Location

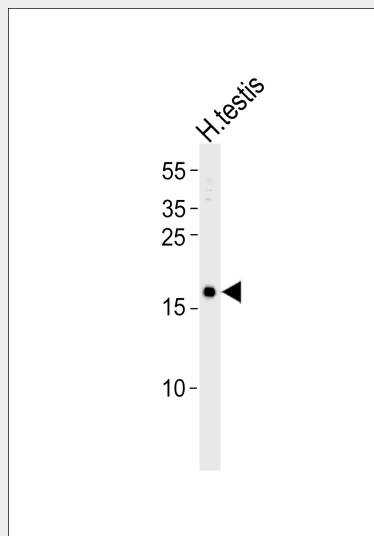
Detected in testis and sperm.

## SPANXA1 Antibody (N-term) - Protocols

Provided below are standard protocols that you may find useful for product applications.

- [Western Blot](#)
- [Blocking Peptides](#)
- [Dot Blot](#)
- [Immunohistochemistry](#)
- [Immunofluorescence](#)
- [Immunoprecipitation](#)
- [Flow Cytometry](#)
- [Cell Culture](#)

## SPANXA1 Antibody (N-term) - Images



Western blot analysis of lysate from human testis tissue lysate, using SPANXA1 Antibody (N-term)(Cat. #AP20710a). AP20710a was diluted at 1:1000. A goat anti-rabbit IgG H&L(HRP) at 1:5000 dilution was used as the secondary antibody. Lysate at 35ug.

## SPANXA1 Antibody (N-term) - References

- Westbrook V.A.,et al.Biol. Reprod. 63:469-481(2000).  
Zendman A.J.,et al.Gene 309:125-133(2003).  
Kouprina N.,et al.Genome Res. 15:1477-1486(2005).  
Larionov V.,et al.Submitted (NOV-2006) to the EMBL/GenBank/DDBJ databases.  
Ross M.T.,et al.Nature 434:325-337(2005).