

**IZUMO2 Antibody (Center)**  
**Purified Rabbit Polyclonal Antibody (Pab)**  
**Catalog # AP20659c**

## Specification

---

### IZUMO2 Antibody (Center) - Product Information

Application	<b>WB, IHC-P,E</b>
Primary Accession	<a href="#">O6UXV1</a>
Reactivity	<b>Human</b>
Host	<b>Rabbit</b>
Clonality	<b>Polyclonal</b>
Isotype	<b>Rabbit IgG</b>

### IZUMO2 Antibody (Center) - Additional Information

**Gene ID** 126123

#### Other Names

Izumo sperm-egg fusion protein 2, IZUMO2, C19orf41, SCRL

#### Target/Specificity

This IZUMO2 antibody is generated from a rabbit immunized with a KLH conjugated synthetic peptide between 90-124 amino acids from the Central region of human IZUMO2.

#### Dilution

WB~~1:1000

IHC-P~~1:25

#### Format

Purified polyclonal antibody supplied in PBS with 0.09% (W/V) sodium azide. This antibody is purified through a protein A column, followed by peptide affinity purification.

#### Storage

Maintain refrigerated at 2-8°C for up to 2 weeks. For long term storage store at -20°C in small aliquots to prevent freeze-thaw cycles.

#### Precautions

IZUMO2 Antibody (Center) is for research use only and not for use in diagnostic or therapeutic procedures.

### IZUMO2 Antibody (Center) - Protein Information

**Name** IZUMO2

**Synonyms** C19orf41, SCRL

#### Cellular Location

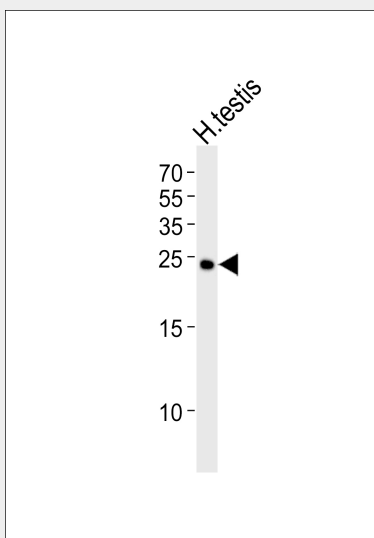
Membrane; Single-pass type I membrane protein

## IZUMO2 Antibody (Center) - Protocols

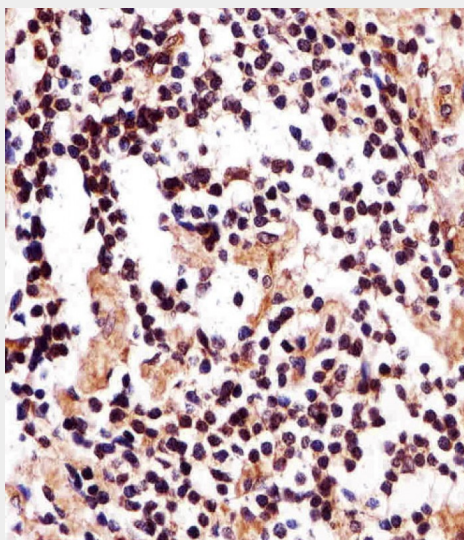
Provided below are standard protocols that you may find useful for product applications.

- [Western Blot](#)
- [Blocking Peptides](#)
- [Dot Blot](#)
- [Immunohistochemistry](#)
- [Immunofluorescence](#)
- [Immunoprecipitation](#)
- [Flow Cytometry](#)
- [Cell Culture](#)

## IZUMO2 Antibody (Center) - Images



Western blot analysis of lysate from human testis tissue lysate, using IZUMO2 Antibody (Center)(Cat. #AP20659c). AP20659c was diluted at 1:1000. A goat anti-rabbit IgG H&L(HRP) at 1:5000 dilution was used as the secondary antibody. Lysate at 35ug.



Immunohistochemical analysis of paraffin-embedded H. lymph section using IZUMO2 Antibody

(Center)(Cat#AP20659c). AP20659c was diluted at 1:25 dilution. A undiluted biotinylated goat polyvalent antibody was used as the secondary, followed by DAB staining.

#### **IZUMO2 Antibody (Center) - References**

Scorilas A.,et al.Submitted (JAN-2002) to the EMBL/GenBank/DDBJ databases.  
Clark H.F.,et al.Genome Res. 13:2265-2270(2003).  
Ota T.,et al.Nat. Genet. 36:40-45(2004).