

**ETFFA Antibody (Center)**  
**Purified Rabbit Polyclonal Antibody (Pab)**  
**Catalog # AP20630c**

**Specification**

---

**ETFFA Antibody (Center) - Product Information**

Application	IF, WB,E
Primary Accession	<a href="#">P13804</a>
Other Accession	<a href="#">Q8HXY0</a>
Reactivity	Human, Mouse
Predicted	Monkey
Host	Rabbit
Clonality	Polyclonal
Isotype	Rabbit IgG
Calculated MW	35080

**ETFFA Antibody (Center) - Additional Information**

**Gene ID** 2108

**Other Names**

Electron transfer flavoprotein subunit alpha, mitochondrial, Alpha-ETF, ETFA

**Target/Specificity**

This ETFFA antibody is generated from a rabbit immunized with a KLH conjugated synthetic peptide between 192-226 amino acids from the Central region of human ETFA.

**Dilution**

IF~~1:25

WB~~1:1000

**Format**

Purified polyclonal antibody supplied in PBS with 0.09% (W/V) sodium azide. This antibody is purified through a protein A column, followed by peptide affinity purification.

**Storage**

Maintain refrigerated at 2-8°C for up to 2 weeks. For long term storage store at -20°C in small aliquots to prevent freeze-thaw cycles.

**Precautions**

ETFFA Antibody (Center) is for research use only and not for use in diagnostic or therapeutic procedures.

**ETFFA Antibody (Center) - Protein Information**

**Name** ETFFA

**Function** Heterodimeric electron transfer flavoprotein that accepts electrons from several

mitochondrial dehydrogenases, including acyl-CoA dehydrogenases, glutaryl-CoA and sarcosine dehydrogenase (PubMed:[10356313](#), PubMed:[15159392](#), PubMed:[15975918](#), PubMed:[27499296](#), PubMed:[9334218](#)). It transfers the electrons to the main mitochondrial respiratory chain via ETF-ubiquinone oxidoreductase (ETF dehydrogenase) (PubMed:[9334218](#)). Required for normal mitochondrial fatty acid oxidation and normal amino acid metabolism (PubMed:[12815589](#), PubMed:[1430199](#), PubMed:[1882842](#)).

#### Cellular Location

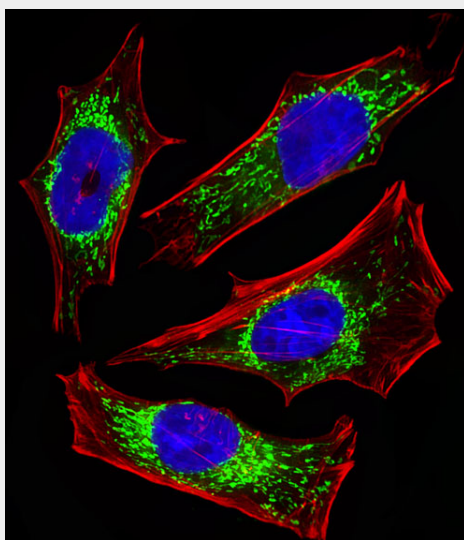
Mitochondrion matrix.

#### ETFFA Antibody (Center) - Protocols

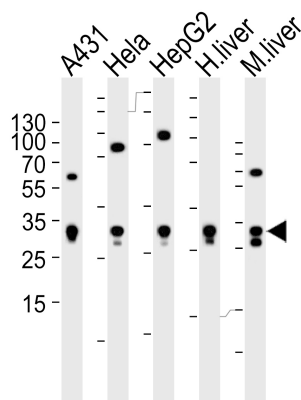
Provided below are standard protocols that you may find useful for product applications.

- [Western Blot](#)
- [Blocking Peptides](#)
- [Dot Blot](#)
- [Immunohistochemistry](#)
- [Immunofluorescence](#)
- [Immunoprecipitation](#)
- [Flow Cytometry](#)
- [Cell Culture](#)

#### ETFFA Antibody (Center) - Images



Fluorescent image of HeLa cells stained with ETFFA Antibody (Center)(Cat#AP20630c). AP20630c was diluted at 1:25 dilution. An Alexa Fluor 488-conjugated goat anti-rabbit IgG at 1:400 dilution was used as the secondary antibody (green). DAPI was used to stain the cell nuclear (blue). Cytoplasmic actin was counterstained with Alexa Fluor® 555 conjugated with Phalloidin (red).



Western blot analysis of lysates from A431, HeLa, HepG2 cell line, human liver and mouse liver tissue lysate (from left to right), using ETFA Antibody (Center) (Cat. #AP20630c). AP20630c was diluted at 1:1000 at each lane. A goat anti-rabbit IgG H&L (HRP) at 1:5000 dilution was used as the secondary antibody. Lysates at 35 µg per lane.

#### ETFFA Antibody (Center) - Background

The electron transfer flavoprotein serves as a specific electron acceptor for several dehydrogenases, including five acyl-CoA dehydrogenases, glutaryl-CoA and sarcosine dehydrogenase. It transfers the electrons to the main mitochondrial respiratory chain via ETF-ubiquinone oxidoreductase (ETF dehydrogenase).

#### ETFFA Antibody (Center) - References

- Finocchiaro G., et al. *J. Biol. Chem.* 263:15773-15780 (1988).
- Olsen R.K.J., et al. *Hum. Mutat.* 22:12-23 (2003).
- Kalnina N., et al. Submitted (AUG-2003) to the EMBL/GenBank/DDBJ databases.
- Ota T., et al. *Nat. Genet.* 36:40-45 (2004).
- Zody M.C., et al. *Nature* 440:671-675 (2006).