

**STRADA Antibody (C-term)**  
**Purified Rabbit Polyclonal Antibody (Pab)**  
**Catalog # AP20607C****Specification**

---

**STRADA Antibody (C-term) - Product Information**

Application	<b>WB, IF, IHC-P, FC,E</b>
Primary Accession	<a href="#">Q7RTN6</a>
Other Accession	<a href="#">Q3UUJ4</a> , <a href="#">Q4R6X5</a>
Reactivity	<b>Human, Mouse</b>
Predicted	<b>Monkey</b>
Host	<b>Rabbit</b>
Clonality	<b>Polyclonal</b>
Isotype	<b>Rabbit IgG</b>

**STRADA Antibody (C-term) - Additional Information****Gene ID** 92335**Other Names**

STE20-related kinase adapter protein alpha, STRAD alpha, STE20-related adapter protein, Serologically defined breast cancer antigen NY-BR-96, STRADA, LYK5  
{ECO:0000312|EMBL:AAP422801}, STRAD

**Target/Specificity**

This STRADA antibody is generated from a rabbit immunized with a KLH conjugated synthetic peptide between 303-346 amino acids from the C-terminal region of human STRADA.

**Dilution**

WB~~1:1000  
IF~~1:25  
IHC-P~~1:100  
FC~~1:25

**Format**

Purified polyclonal antibody supplied in PBS with 0.09% (W/V) sodium azide. This antibody is purified through a protein A column, followed by peptide affinity purification.

**Storage**

Maintain refrigerated at 2-8°C for up to 2 weeks. For long term storage store at -20°C in small aliquots to prevent freeze-thaw cycles.

**Precautions**

STRADA Antibody (C-term) is for research use only and not for use in diagnostic or therapeutic procedures.

**STRADA Antibody (C-term) - Protein Information**

**Name** STRADA

**Synonyms** LYK5 {ECO:0000312|EMBL:AAP42280.1}, STRA

**Function** Pseudokinase which, in complex with CAB39/MO25 (CAB39/MO25alpha or CAB39L/MO25beta), binds to and activates STK11/LKB1. Adopts a closed conformation typical of active protein kinases and binds STK11/LKB1 as a pseudosubstrate, promoting conformational change of STK11/LKB1 in an active conformation.

**Cellular Location**

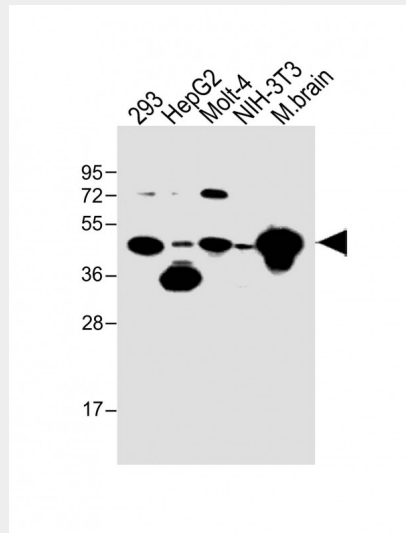
Nucleus. Cytoplasm

**STRADA Antibody (C-term) - Protocols**

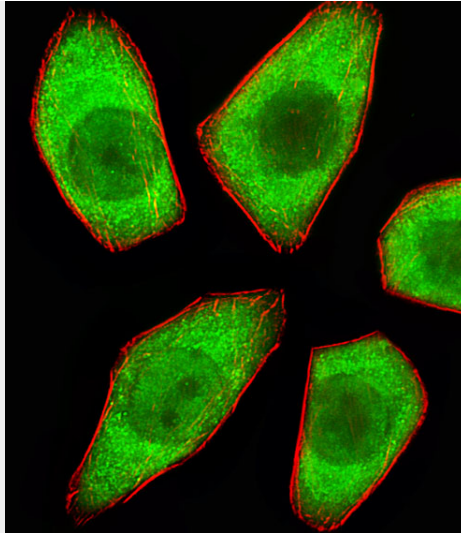
Provided below are standard protocols that you may find useful for product applications.

- [Western Blot](#)
- [Blocking Peptides](#)
- [Dot Blot](#)
- [Immunohistochemistry](#)
- [Immunofluorescence](#)
- [Immunoprecipitation](#)
- [Flow Cytometry](#)
- [Cell Culture](#)

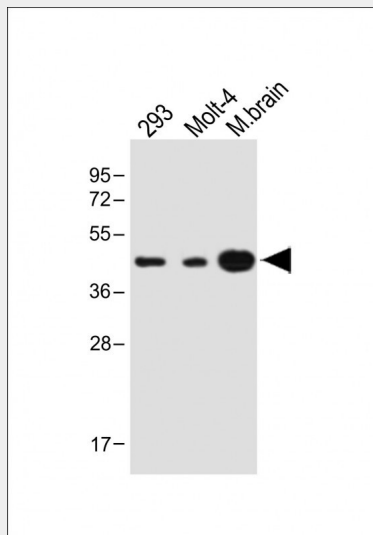
**STRADA Antibody (C-term) - Images**



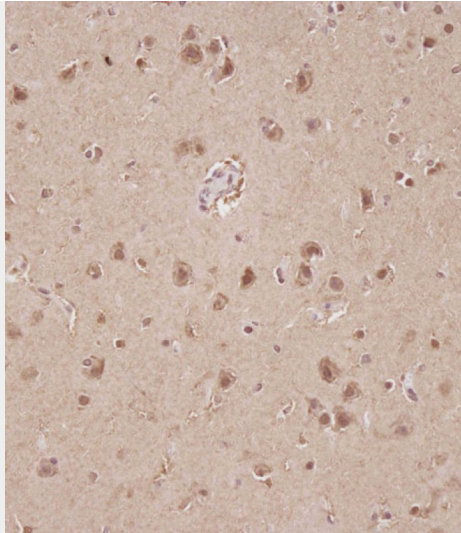
All lanes : Anti-STRADA Antibody (C-term) at 1:1000 dilution Lane 1: 293 whole cell lysate Lane 2: HepG2 whole cell lysate Lane 3: Molt-4 whole cell lysate Lane 4: NIH/3T3 whole cell lysate Lane 5: mouse brain lysate Lysates/proteins at 20 µg per lane. Secondary Goat Anti-Rabbit IgG, (H+L), Peroxidase conjugated at 1/10000 dilution. Predicted band size : 48 kDa Blocking/Dilution buffer: 5% NFDM/TBST.



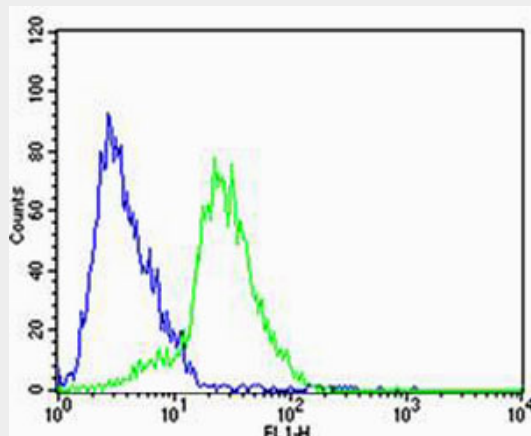
Fluorescent image of A549 cells stained with STRADA Antibody (C-term)(Cat#AP20607C). AP20607C was diluted at 1:25 dilution. An Alexa Fluor 488-conjugated goat anti-rabbit IgG at 1:400 dilution was used as the secondary antibody (green). Cytoplasmic actin was counterstained with Alexa Fluor® 555 conjugated with Phalloidin (red).



All lanes : Anti-STRADA Antibody (C-term) at 1:1000 dilution Lane 1: 293 whole cell lysate Lane 2: Molt-4 cell lysate Lane 3: Mouse brain lysate Lysates/proteins at 20 µg per lane. Secondary Goat Anti-Rabbit IgG, (H+L), Peroxidase conjugated at 1/10000 dilution. Predicted band size : 48 kDa Blocking/Dilution buffer: 5% NFDN/TBST.



Immunohistochemical analysis of AP20607C on paraffin-embedded Human brain tissue. Tissue was fixed with formaldehyde at room temperature. Heat induced epitope retrieval was performed by EDTA buffer (pH9. 0). Samples were incubated with primary antibody(1:100) for 1 hour at room temperature. Undiluted CRF Anti-Polyvalent HRP Polymer antibody was used as the secondary antibody.



Flow cytometric analysis of SH-SY5Y cells using STRADA Antibody (C-term)(green, Cat#AP20607C) compared to an isotype control of rabbit IgG(blue). AP20607C was diluted at 1:25 dilution. An Alexa Fluor® 488 goat anti-rabbit IgG at 1:400 dilution was used as the secondary antibody.

### **STRADA Antibody (C-term) - Background**

Pseudokinase which, in complex with CAB39/MO25 (CAB39/MO25alpha or CAB39L/MO25beta), binds to and activates STK11/LKB1. Adopts a closed conformation typical of active protein kinases and binds STK11/LKB1 as a pseudosubstrate, promoting conformational change of STK11/LKB1 in an active conformation.

### **STRADA Antibody (C-term) - References**

- Scanlan M.J.,et al.Cancer Immun. 1:4-4(2001).
- Shan Y.X.,et al.Submitted (AUG-2003) to the EMBL/GenBank/DDBJ databases.
- Ota T.,et al.Nat. Genet. 36:40-45(2004).
- Bechtel S.,et al.BMC Genomics 8:399-399(2007).
- Zody M.C.,et al.Nature 440:1045-1049(2006).

**STRADA Antibody (C-term) - Citations**

- [GSK-3 \$\beta\$  controls autophagy by modulating LKB1-AMPK pathway in prostate cancer cells.](#)