

BUB3 Antibody (Drosophila)
Purified Rabbit Polyclonal Antibody (Pab)
Catalog # AP20606a

Specification

BUB3 Antibody (Drosophila) - Product Information

Application	WB,E
Primary Accession	Q9VAJ2
Reactivity	Drosophila
Host	Rabbit
Clonality	Polyclonal
Isotype	Rabbit IgG
Antigen Region	201-230

BUB3 Antibody (Drosophila) - Additional Information

Gene ID 43490

Target/Specificity

This BUB3 antibody is generated from a rabbit immunized with a KLH conjugated synthetic peptide between 201-230 amino acids from Drosophila melanogaster (Fruit fly) BUB3.

Dilution

WB~~1:1000

Storage

Maintain refrigerated at 2-8°C for up to 2 weeks. For long term storage store at -20°C in small aliquots to prevent freeze-thaw cycles.

Precautions

BUB3 Antibody (Drosophila) is for research use only and not for use in diagnostic or therapeutic procedures.

BUB3 Antibody (Drosophila) - Protein Information

Name Q9VAJ2

Cellular Location

Chromosome, centromere {ECO:0000256|ARBA:ARBA00004584}. Nucleus {ECO:0000256|ARBA:ARBA00004123}

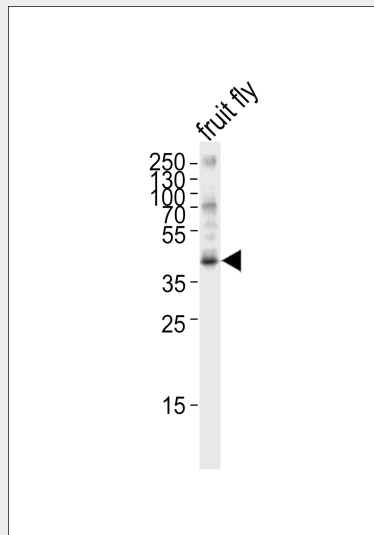
BUB3 Antibody (Drosophila) - Protocols

Provided below are standard protocols that you may find useful for product applications.

- [Western Blot](#)

- [Blocking Peptides](#)
- [Dot Blot](#)
- [Immunohistochemistry](#)
- [Immunofluorescence](#)
- [Immunoprecipitation](#)
- [Flow Cytometry](#)
- [Cell Culture](#)

BUB3 Antibody (Drosophila) - Images



Western blot analysis of lysate from fruit fly, using BUB3 Antibody (Drosophila)(Cat. #AP20606a). AP20606a was diluted at 1:1000. A goat anti-rabbit IgG H&L(HRP) at 1:5000 dilution was used as the secondary antibody. Lysate at 35ug.

BUB3 Antibody (Drosophila) - Citations

- [A tumor suppressor role of the Bub3 spindle checkpoint protein after apoptosis inhibition.](#)