

**FAM216B Antibody (C-term)**  
**Purified Rabbit Polyclonal Antibody (Pab)**  
**Catalog # AP20605c**

**Specification**

---

**FAM216B Antibody (C-term) - Product Information**

Application	<b>WB, IHC-P,E</b>
Primary Accession	<a href="#">Q8N7L0</a>
Reactivity	<b>Human</b>
Host	<b>Rabbit</b>
Clonality	<b>Polyclonal</b>
Isotype	<b>Rabbit IgG</b>

**FAM216B Antibody (C-term) - Additional Information**

**Gene ID** 144809

**Other Names**

Protein FAM216B, FAM216B, C13orf30

**Target/Specificity**

This C13orf30 antibody is generated from a rabbit immunized with a KLH conjugated synthetic peptide between 106-139 amino acids from the C-terminal region of human C13orf30.

**Dilution**

WB~~1:1000

IHC-P~~1:25

**Format**

Purified polyclonal antibody supplied in PBS with 0.09% (W/V) sodium azide. This antibody is purified through a protein A column, followed by peptide affinity purification.

**Storage**

Maintain refrigerated at 2-8°C for up to 2 weeks. For long term storage store at -20°C in small aliquots to prevent freeze-thaw cycles.

**Precautions**

FAM216B Antibody (C-term) is for research use only and not for use in diagnostic or therapeutic procedures.

**FAM216B Antibody (C-term) - Protein Information**

**Name** FAM216B

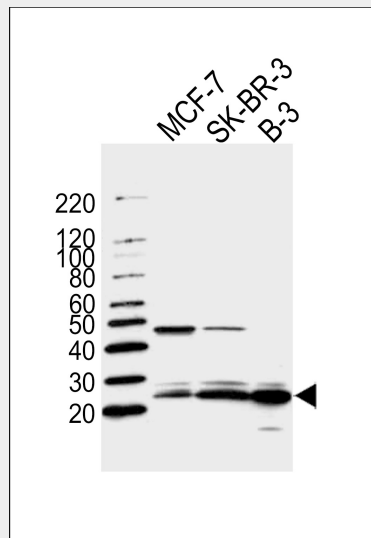
**Synonyms** C13orf30

## FAM216B Antibody (C-term) - Protocols

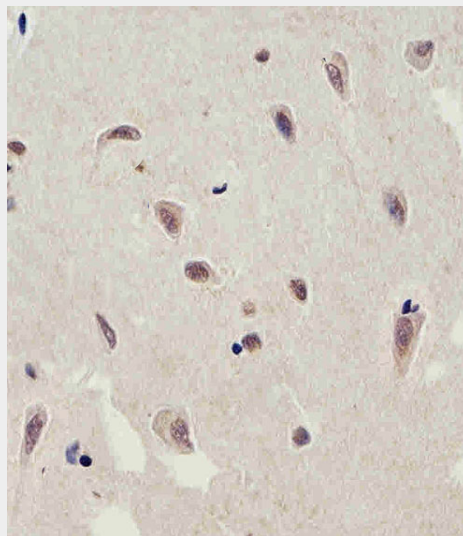
Provided below are standard protocols that you may find useful for product applications.

- [Western Blot](#)
- [Blocking Peptides](#)
- [Dot Blot](#)
- [Immunohistochemistry](#)
- [Immunofluorescence](#)
- [Immunoprecipitation](#)
- [Flow Cytometry](#)
- [Cell Culture](#)

## FAM216B Antibody (C-term) - Images

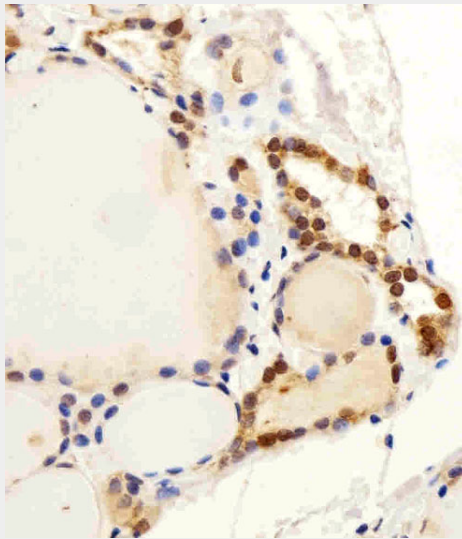


Western blot analysis of lysates from MCF-7, SK-BR-3, B-3 cell line (from left to right), using C13orf30 Antibody (C-term)(Cat. #AP20605c). AP20605c was diluted at 1:1000 at each lane. A goat anti-rabbit IgG H&L(HRP) at 1:5000 dilution was used as the secondary antibody. Lysates at 35ug per lane.



Immunohistochemical analysis of paraffin-embedded H.brain section using C13orf30 Antibody

(C-term)(Cat#AP20605c). AP20605c was diluted at 1:25 dilution. A peroxidase-conjugated goat anti-rabbit IgG at 1:400 dilution was used as the secondary antibody, followed by DAB staining.



Immunohistochemical analysis of paraffin-embedded H.thyroid section using C13orf30 Antibody (C-term)(Cat#AP20605c). AP20605c was diluted at 1:25 dilution. A peroxidase-conjugated goat anti-rabbit IgG at 1:400 dilution was used as the secondary antibody, followed by DAB staining.

#### **FAM216B Antibody (C-term) - References**

- Ota T.,et al.Nat. Genet. 36:40-45(2004).  
Dunham A.,et al.Nature 428:522-528(2004).  
Mural R.J.,et al.Submitted (JUL-2005) to the EMBL/GenBank/DDBJ databases.