

**AGAP4 Antibody (C-term)**  
**Purified Rabbit Polyclonal Antibody (Pab)**  
**Catalog # AP20603c**

**Specification**

---

**AGAP4 Antibody (C-term) - Product Information**

Application	IF, WB, IHC-P, FC,E
Primary Accession	<a href="#">Q96P64</a>
Other Accession	<a href="#">Q8TF27</a> , <a href="#">A6NIR3</a> , <a href="#">Q5VW22</a> , <a href="#">Q5VTM2</a>
Reactivity	Human
Predicted	Monkey
Host	Rabbit
Clonality	Polyclonal
Isotype	Rabbit IgG

**AGAP4 Antibody (C-term) - Additional Information**

**Gene ID** 119016

**Other Names**

Arf-GAP with GTPase, ANK repeat and PH domain-containing protein 4, Centaurin-gamma-like family member 1, Centaurin-gamma-like family member 5, AGAP8, CTGLF1, CTGLF5, MRIP2

**Target/Specificity**

This AGAP4 antibody is generated from a rabbit immunized with a KLH conjugated synthetic peptide between 498-531 amino acids from the C-terminal region of human AGAP4

**Dilution**

IF~~1:25  
WB~~1:1000  
IHC-P~~1:25  
FC~~1:25

**Format**

Purified polyclonal antibody supplied in PBS with 0.09% (W/V) sodium azide. This antibody is purified through a protein A column, followed by peptide affinity purification.

**Storage**

Maintain refrigerated at 2-8°C for up to 2 weeks. For long term storage store at -20°C in small aliquots to prevent freeze-thaw cycles.

**Precautions**

AGAP4 Antibody (C-term) is for research use only and not for use in diagnostic or therapeutic procedures.

**AGAP4 Antibody (C-term) - Protein Information**

**Name** AGAP4 ([HGNC:23459](#))

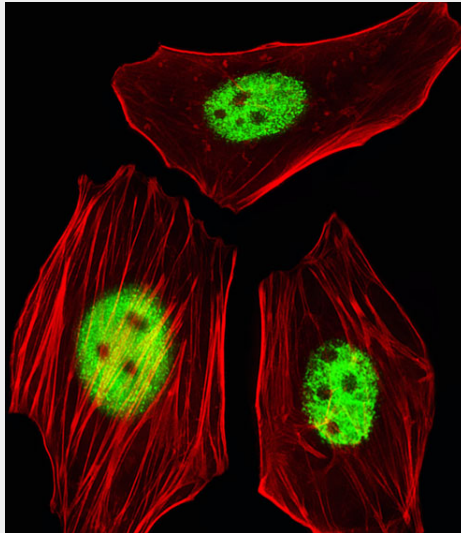
**Function** Putative GTPase-activating protein.

### **AGAP4 Antibody (C-term) - Protocols**

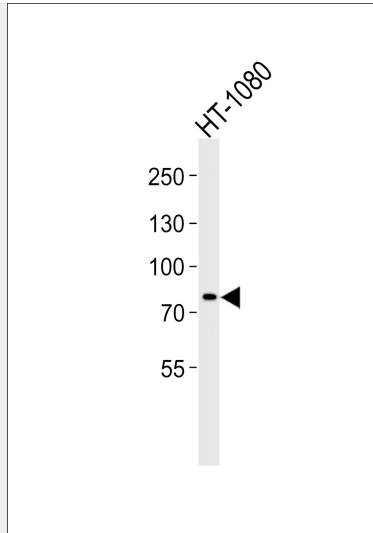
Provided below are standard protocols that you may find useful for product applications.

- [Western Blot](#)
- [Blocking Peptides](#)
- [Dot Blot](#)
- [Immunohistochemistry](#)
- [Immunofluorescence](#)
- [Immunoprecipitation](#)
- [Flow Cytometry](#)
- [Cell Culture](#)

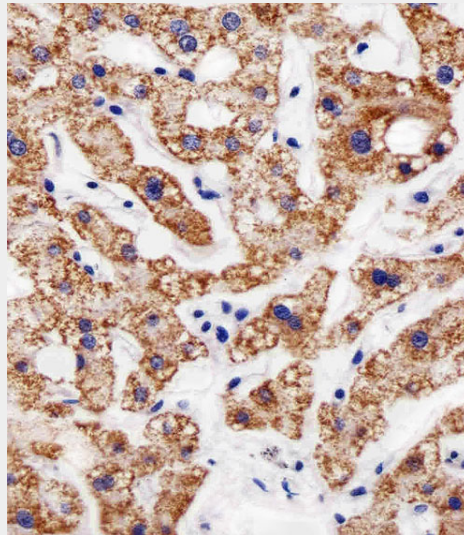
### **AGAP4 Antibody (C-term) - Images**



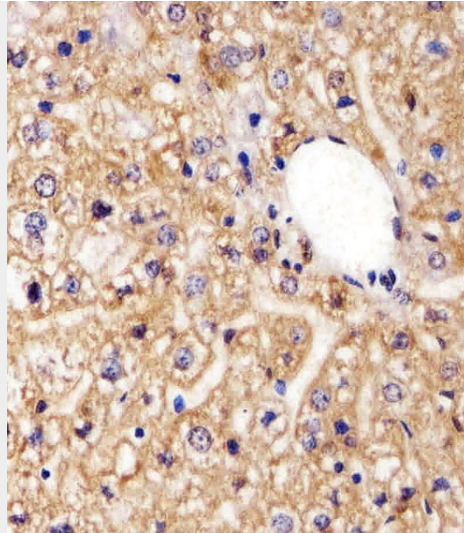
Fluorescent image of HeLa cells stained with AGAP4 Antibody (C-term)(Cat#AP20603c). AP20603c was diluted at 1:25 dilution. An Alexa Fluor 488-conjugated goat anti-rabbit IgG at 1:400 dilution was used as the secondary antibody (green). Cytoplasmic actin was counterstained with Alexa Fluor® 555 conjugated with Phalloidin (red).



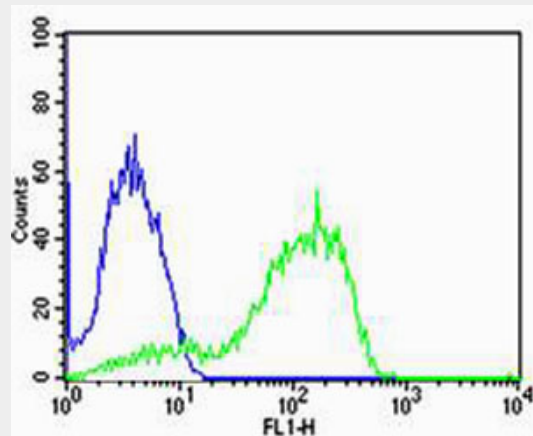
Western blot analysis of lysate from HT-1080 cell line, using AGAP4 Antibody (C-term)(Cat. # AP20603c). AP20603c was diluted at 1:1000. A goat anti-rabbit IgG H&L(HRP) at 1:5000 dilution was used as the secondary antibody. Lysate at 35ug.



Immunohistochemical analysis of paraffin-embedded H. liver section using AGAP4 Antibody (C-term)(Cat#AP20603c). AP20603c was diluted at 1:25 dilution. A peroxidase-conjugated goat anti-rabbit IgG at 1:400 dilution was used as the secondary antibody, followed by DAB staining.



Immunohistochemical analysis of paraffin-embedded M. liver section using AGAP4 Antibody (C-term)(Cat#AP20603c). AP20603c was diluted at 1:25 dilution. A peroxidase-conjugated goat anti-rabbit IgG at 1:400 dilution was used as the secondary antibody, followed by DAB staining.



Flow cytometric analysis of MCF-7 cells using AGAP4 Antibody (C-term)(green, Cat#AP20603c) compared to an isotype control of rabbit IgG(blue). AP20603c was diluted at 1:25 dilution. An Alexa Fluor® 488 goat anti-rabbit IgG at 1:400 dilution was used as the secondary antibody.

#### **AGAP4 Antibody (C-term) - Background**

Putative GTPase-activating protein (Potential).

#### **AGAP4 Antibody (C-term) - References**

Deloukas P.,et al.Nature 429:375-381(2004).  
Varela I.,et al.Nature 469:539-542(2011).