

**PSEN2 Antibody (N-term)**  
**Purified Rabbit Polyclonal Antibody (Pab)**  
**Catalog # AP20599a**

**Specification**

---

**PSEN2 Antibody (N-term) - Product Information**

Application	<b>WB, FC,E</b>
Primary Accession	<a href="#">P49810</a>
Reactivity	<b>Human</b>
Host	<b>Rabbit</b>
Clonality	<b>Polyclonal</b>
Isotype	<b>Rabbit IgG</b>
Calculated MW	<b>50140</b>

**PSEN2 Antibody (N-term) - Additional Information**

**Gene ID** 5664

**Other Names**

Presenilin-2, PS-2, 3423-, AD3LP, AD5, E5-1, STM-2, Presenilin-2 NTF subunit, Presenilin-2 CTF subunit, PSEN2, AD4, PS2, PSNL2, STM2

**Target/Specificity**

This PSEN2 antibody is generated from a rabbit immunized with a KLH conjugated synthetic peptide between 32-65 amino acids from the N-terminal region of human PSEN2(Presenilin-2 NTF subunit).

**Dilution**

WB~~1:1000

FC~~1:25

**Format**

Purified polyclonal antibody supplied in PBS with 0.09% (W/V) sodium azide. This antibody is purified through a protein A column, followed by peptide affinity purification.

**Storage**

Maintain refrigerated at 2-8°C for up to 2 weeks. For long term storage store at -20°C in small aliquots to prevent freeze-thaw cycles.

**Precautions**

PSEN2 Antibody (N-term) is for research use only and not for use in diagnostic or therapeutic procedures.

**PSEN2 Antibody (N-term) - Protein Information**

**Name** PSEN2

**Synonyms** AD4, PS2, PSNL2, STM2

**Function** Probable catalytic subunit of the gamma-secretase complex, an endoprotease complex that catalyzes the intramembrane cleavage of integral membrane proteins such as Notch receptors and APP (amyloid- beta precursor protein). Requires the other members of the gamma-secretase complex to have a protease activity. May play a role in intracellular signaling and gene expression or in linking chromatin to the nuclear membrane. May function in the cytoplasmic partitioning of proteins. The holoprotein functions as a calcium-leak channel that allows the passive movement of calcium from endoplasmic reticulum to cytosol and is involved in calcium homeostasis (PubMed:[16959576](#)). Is a regulator of mitochondrion-endoplasmic reticulum membrane tethering and modulates calcium ions shuttling between ER and mitochondria (PubMed:[21285369](#)).

#### Cellular Location

Endoplasmic reticulum membrane; Multi-pass membrane protein. Golgi apparatus membrane; Multi-pass membrane protein

#### Tissue Location

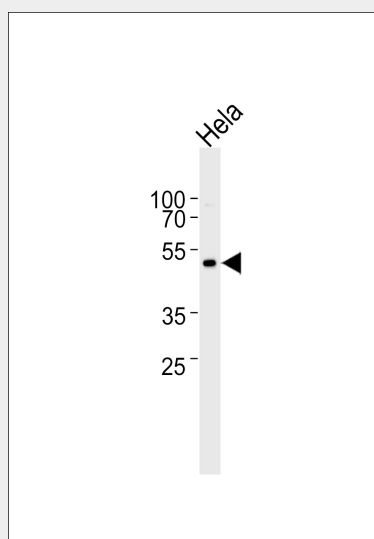
Isoform 1 is seen in the placenta, skeletal muscle and heart while isoform 2 is seen in the heart, brain, placenta, liver, skeletal muscle and kidney.

### PSEN2 Antibody (N-term) - Protocols

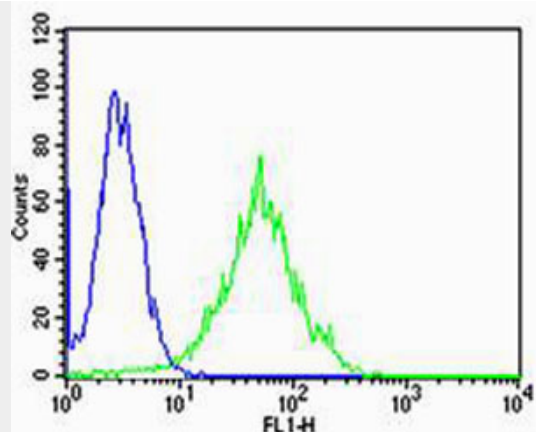
Provided below are standard protocols that you may find useful for product applications.

- [Western Blot](#)
- [Blocking Peptides](#)
- [Dot Blot](#)
- [Immunohistochemistry](#)
- [Immunofluorescence](#)
- [Immunoprecipitation](#)
- [Flow Cytometry](#)
- [Cell Culture](#)

### PSEN2 Antibody (N-term) - Images



Western blot analysis of lysate from HeLa cell line, using PSEN2(Presenilin-2 NTF subunit) Antibody (N-term)(Cat. # AP20599a). AP20599a was diluted at 1:1000. A goat anti-rabbit IgG H&L(HRP) at 1:5000 dilution was used as the secondary antibody. Lysate at 35ug.



Flow cytometric analysis of HeLa cells using PSEN2(Presenilin-2 NTF subunit) Antibody (N-term)(green, Cat#AP20599a) compared to an isotype control of rabbit IgG(blue). AP20599a was diluted at 1:25 dilution. An Alexa Fluor® 488 goat anti-rabbit IgG at 1:400 dilution was used as the secondary antibody.

#### **PSEN2 Antibody (N-term) - Background**

Probable catalytic subunit of the gamma-secretase complex, an endoprotease complex that catalyzes the intramembrane cleavage of integral membrane proteins such as Notch receptors and APP (beta-amyloid precursor protein). Requires the other members of the gamma-secretase complex to have a protease activity. May play a role in intracellular signaling and gene expression or in linking chromatin to the nuclear membrane. May function in the cytoplasmic partitioning of proteins.

#### **PSEN2 Antibody (N-term) - References**

Levy-Lahad E., et al. *Science* 269:973-977(1995).  
Rogaev E.I., et al. *Nature* 376:775-778(1995).  
Li J., et al. *Proc. Natl. Acad. Sci. U.S.A.* 92:12180-12184(1995).  
Levy-Lahad E., et al. *Genomics* 34:198-204(1996).  
Kalnina N., et al. Submitted (MAY-2003) to the EMBL/GenBank/DDBJ databases.