

**MYH14 Antibody (Center)**  
**Purified Rabbit Polyclonal Antibody (Pab)**  
**Catalog # AP20565a****Specification**

---

**MYH14 Antibody (Center) - Product Information**

Application	<b>WB, IHC-P,E</b>
Primary Accession	<a href="#">O7Z406</a>
Other Accession	<a href="#">O6URW6</a>
Reactivity	<b>Human</b>
Predicted	<b>Mouse</b>
Host	<b>Rabbit</b>
Clonality	<b>Polyclonal</b>
Isotype	<b>Rabbit IgG</b>
Calculated MW	<b>227871</b>
Antigen Region	<b>654-668</b>

**MYH14 Antibody (Center) - Additional Information****Gene ID** 79784**Other Names**

Myosin-14, Myosin heavy chain 14, Myosin heavy chain, non-muscle IIc, Non-muscle myosin heavy chain IIc, NMHC II-C, MYH14, KIAA2034

**Target/Specificity**

This MYH14 antibody is generated from a rabbit immunized with a KLH conjugated synthetic peptide between 654-668 amino acids from the Central region of human MYH14.

**Dilution**

WB~~1:1000

IHC-P~~1:25

**Format**

Purified polyclonal antibody supplied in PBS with 0.09% (W/V) sodium azide. This antibody is purified through a protein A column, followed by peptide affinity purification.

**Storage**

Maintain refrigerated at 2-8°C for up to 2 weeks. For long term storage store at -20°C in small aliquots to prevent freeze-thaw cycles.

**Precautions**

MYH14 Antibody (Center) is for research use only and not for use in diagnostic or therapeutic procedures.

**MYH14 Antibody (Center) - Protein Information****Name** MYH14

## Synonyms KIAA2034

**Function** Cellular myosin that appears to play a role in cytokinesis, cell shape, and specialized functions such as secretion and capping.

## Tissue Location

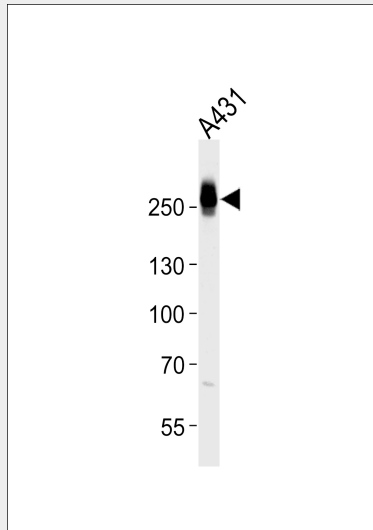
High levels of expression are found in brain (highest in corpus callosum), heart, kidney, liver, lung, small intestine, colon and skeletal muscle. Expression is low in organs composed mainly of smooth muscle, such as aorta, uterus and urinary bladder. No detectable expression is found in thymus, spleen, placenta and lymphocytes.

## MYH14 Antibody (Center) - Protocols

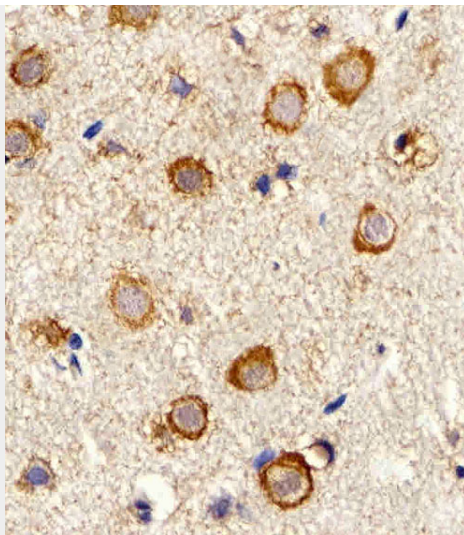
Provided below are standard protocols that you may find useful for product applications.

- [Western Blot](#)
- [Blocking Peptides](#)
- [Dot Blot](#)
- [Immunohistochemistry](#)
- [Immunofluorescence](#)
- [Immunoprecipitation](#)
- [Flow Cytometry](#)
- [Cell Culture](#)

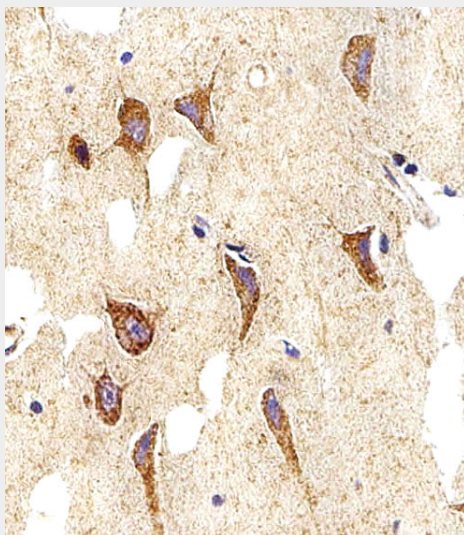
## MYH14 Antibody (Center) - Images



Western blot analysis of lysate from A431 cell line, using MYH14 Antibody (Center)(Cat. #AP20565a). AP20565a was diluted at 1:1000. A goat anti-rabbit IgG H&L(HRP) at 1:5000 dilution was used as the secondary antibody. Lysate at 35ug.



Immunohistochemical analysis of paraffin-embedded M.brain section using MYH14 Antibody (Center)(Cat#AP20565a). AP20565a was diluted at 1:25 dilution. A peroxidase-conjugated goat anti-rabbit IgG at 1:400 dilution was used as the secondary antibody, followed by DAB staining.



Immunohistochemical analysis of paraffin-embedded H.brain section using MYH14 Antibody (Center)(Cat#AP20565a). AP20565a was diluted at 1:25 dilution. A peroxidase-conjugated goat anti-rabbit IgG at 1:400 dilution was used as the secondary antibody, followed by DAB staining.

#### **MYH14 Antibody (Center) - Background**

Cellular myosin that appears to play a role in cytokinesis, cell shape, and specialized functions such as secretion and capping (By similarity).

#### **MYH14 Antibody (Center) - References**

Leal A.,et al.Gene 312:165-171(2003).  
Nagase T.,et al.Submitted (JAN-2007) to the EMBL/GenBank/DDBJ databases.  
Grimwood J.,et al.Nature 428:529-535(2004).  
Bienvenut W.V.,et al.Submitted (NOV-2006) to UniProtKB.  
Jana S.S.,et al.J. Biol. Chem. 284:11563-11571(2009).