

**MMAB Antibody (Center)**  
**Purified Rabbit Polyclonal Antibody (Pab)**  
**Catalog # AP20556c**

**Specification**

---

**MMAB Antibody (Center) - Product Information**

Application	WB,E
Primary Accession	<a href="#">O96EY8</a>
Other Accession	<a href="#">O9D273</a>
Reactivity	Human
Predicted	Mouse
Host	Rabbit
Clonality	Polyclonal
Isotype	Rabbit IgG
Calculated MW	27388

**MMAB Antibody (Center) - Additional Information**

**Gene ID** 326625

**Other Names**

Cob(I)yrinic acid a, c-diamide adenosyltransferase, mitochondrial, Cob(I)alamin adenosyltransferase, Methylmalonic aciduria type B protein, MMAB

**Target/Specificity**

This MMAB antibody is generated from a rabbit immunized with a KLH conjugated synthetic peptide between 50-81 amino acids from the Central region of human MMAB.

**Dilution**

WB~~1:1000

**Format**

Purified polyclonal antibody supplied in PBS with 0.09% (W/V) sodium azide. This antibody is purified through a protein A column, followed by peptide affinity purification.

**Storage**

Maintain refrigerated at 2-8°C for up to 2 weeks. For long term storage store at -20°C in small aliquots to prevent freeze-thaw cycles.

**Precautions**

MMAB Antibody (Center) is for research use only and not for use in diagnostic or therapeutic procedures.

**MMAB Antibody (Center) - Protein Information**

**Name** MMAB ([HGNC:19331](#))

**Function** Converts cob(I)alamin to adenosylcobalamin (adenosylcob(III)alamin), a coenzyme for

methylmalonyl-CoA mutase, therefore participates in the final step of the vitamin B12 conversion (PubMed:[12514191](#)). Generates adenosylcobalamin (AdoCbl) and directly delivers the cofactor to MUT in a transfer that is stimulated by ATP- binding to MMAB and gated by MMAA (Probable).

#### Cellular Location

Mitochondrion.

#### Tissue Location

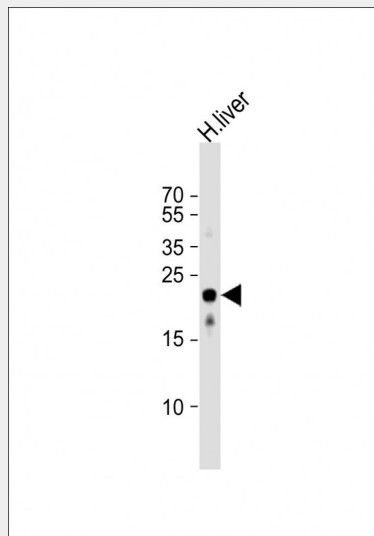
Expressed in liver and skeletal muscle.

### MMAB Antibody (Center) - Protocols

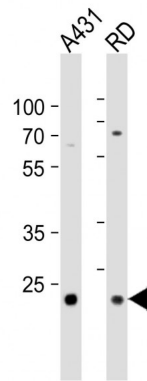
Provided below are standard protocols that you may find useful for product applications.

- [Western Blot](#)
- [Blocking Peptides](#)
- [Dot Blot](#)
- [Immunohistochemistry](#)
- [Immunofluorescence](#)
- [Immunoprecipitation](#)
- [Flow Cytometry](#)
- [Cell Culture](#)

### MMAB Antibody (Center) - Images



Anti-MMAB Antibody (Center) at 1:1000 dilution + human liver lysates Lysates/proteins at 20  $\mu$ g per lane. Secondary Goat Anti-Rabbit IgG, (H+L), Peroxidase conjugated at 1/10000 dilution Predicted band size : 27 kDa Blocking/Dilution buffer: 5% NFDM/TBST.



All lanes : Anti-MMAB Antibody (Center) at 1:1000 dilution Lane 1: A431 whole cell lysates Lane 2: RD whole cell lysates Lysates/proteins at 20 µg per lane. Secondary Goat Anti-Rabbit IgG, (H+L), Peroxidase conjugated at 1/10000 dilution Predicted band size : 26 kDa Blocking/Dilution buffer: 5% NFDM/TBST.

#### MMAB Antibody (Center) - References

- Dobson C.M.,et al.Hum. Mol. Genet. 11:3361-3369(2002).  
Leal N.A.,et al.J. Biol. Chem. 278:9227-9234(2003).  
Burkard T.R.,et al.BMC Syst. Biol. 5:17-17(2011).  
Schubert H.L.,et al.Biochemistry 45:15188-15196(2006).  
Martinez M.A.,et al.Mol. Genet. Metab. 84:317-325(2005).