

**C1QA Antibody (Center)**  
**Purified Rabbit Polyclonal Antibody (Pab)**  
**Catalog # AP20555c**

**Specification**

---

**C1QA Antibody (Center) - Product Information**

Application	<b>WB,E</b>
Primary Accession	<a href="#">P02745</a>
Reactivity	<b>Human</b>
Host	<b>Rabbit</b>
Clonality	<b>Polyclonal</b>
Isotype	<b>Rabbit IgG</b>
Calculated MW	<b>26017</b>

**C1QA Antibody (Center) - Additional Information**

**Gene ID** 712

**Other Names**

Complement C1q subcomponent subunit A, C1QA

**Target/Specificity**

This C1QA antibody is generated from a rabbit immunized with a KLH conjugated synthetic peptide between 89-103 amino acids from the Central region of human C1QA.

**Dilution**

WB~~1:1000

**Format**

Purified polyclonal antibody supplied in PBS with 0.09% (W/V) sodium azide. This antibody is purified through a protein A column, followed by peptide affinity purification.

**Storage**

Maintain refrigerated at 2-8°C for up to 2 weeks. For long term storage store at -20°C in small aliquots to prevent freeze-thaw cycles.

**Precautions**

C1QA Antibody (Center) is for research use only and not for use in diagnostic or therapeutic procedures.

**C1QA Antibody (Center) - Protein Information**

**Name** C1QA

**Function** C1q associates with the proenzymes C1r and C1s to yield C1, the first component of the serum complement system. The collagen-like regions of C1q interact with the Ca(2+)-dependent C1r(2)C1s(2) proenzyme complex, and efficient activation of C1 takes place on interaction of the globular heads of C1q with the Fc regions of IgG or IgM antibody present in immune complexes.

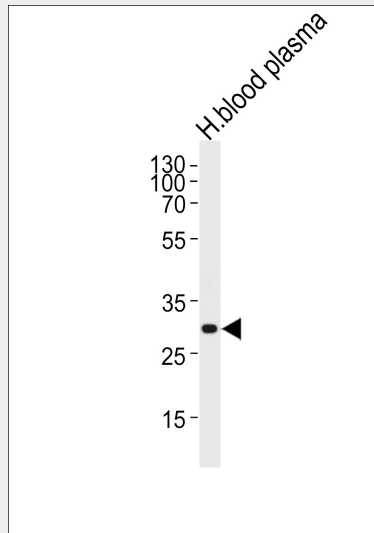
**Cellular Location**  
Secreted.

### C1QA Antibody (Center) - Protocols

Provided below are standard protocols that you may find useful for product applications.

- [Western Blot](#)
- [Blocking Peptides](#)
- [Dot Blot](#)
- [Immunohistochemistry](#)
- [Immunofluorescence](#)
- [Immunoprecipitation](#)
- [Flow Cytometry](#)
- [Cell Culture](#)

### C1QA Antibody (Center) - Images



Western blot analysis of lysate from human blood plasma tissue lysate, using C1QA Antibody (Center) (Cat. # AP20555c). AP20555c was diluted at 1:1000 at each lane. A goat anti-rabbit IgG H&L(HRP) at 1:5000 dilution was used as the secondary antibody. Lysate at 35ug per lane.

### C1QA Antibody (Center) - Background

C1q associates with the proenzymes C1r and C1s to yield C1, the first component of the serum complement system. The collagen-like regions of C1q interact with the Ca(2+)-dependent C1r(2)C1s(2) proenzyme complex, and efficient activation of C1 takes place on interaction of the globular heads of C1q with the Fc regions of IgG or IgM antibody present in immune complexes.

### C1QA Antibody (Center) - References

- Sellar G.C., et al. *Biochem. J.* 274:481-490(1991).  
Wan T., et al. Submitted (MAR-1999) to the EMBL/GenBank/DDBJ databases.  
Ota T., et al. *Nat. Genet.* 36:40-45(2004).  
Gregory S.G., et al. *Nature* 441:315-321(2006).  
Mural R.J., et al. Submitted (JUL-2005) to the EMBL/GenBank/DDBJ databases.