

**ESD Antibody (Center)**  
**Purified Rabbit Polyclonal Antibody (Pab)**  
**Catalog # AP20553c**

**Specification**

---

**ESD Antibody (Center) - Product Information**

Application	WB,E
Primary Accession	<a href="#">P10768</a>
Other Accession	<a href="#">O9GJT2</a>
Reactivity	Human, Mouse, Rat
Predicted	Pig
Host	Rabbit
Clonality	Polyclonal
Isotype	Rabbit IgG
Calculated MW	31463

**ESD Antibody (Center) - Additional Information**

**Gene ID** 2098

**Other Names**

S-formylglutathione hydrolase, FGH, Esterase D, Methylumbelliferyl-acetate deacetylase, ESD

**Target/Specificity**

This ESD antibody is generated from a rabbit immunized with a KLH conjugated synthetic peptide between 68-102 amino acids from the Central region of human ESD.

**Dilution**

WB~~1:1000

**Format**

Purified polyclonal antibody supplied in PBS with 0.09% (W/V) sodium azide. This antibody is purified through a protein A column, followed by peptide affinity purification.

**Storage**

Maintain refrigerated at 2-8°C for up to 2 weeks. For long term storage store at -20°C in small aliquots to prevent freeze-thaw cycles.

**Precautions**

ESD Antibody (Center) is for research use only and not for use in diagnostic or therapeutic procedures.

**ESD Antibody (Center) - Protein Information**

**Name** ESD

**Function** Serine hydrolase involved in the detoxification of formaldehyde.

## Cellular Location

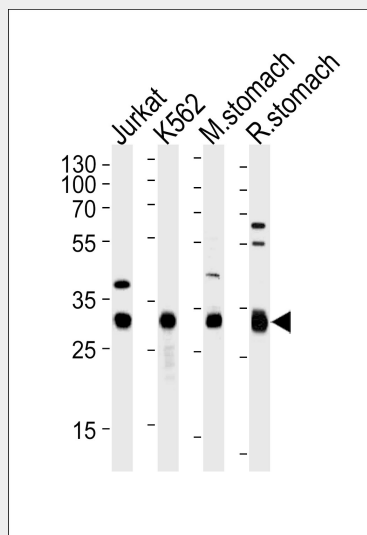
Cytoplasm. Cytoplasmic vesicle.

## ESD Antibody (Center) - Protocols

Provided below are standard protocols that you may find useful for product applications.

- [Western Blot](#)
- [Blocking Peptides](#)
- [Dot Blot](#)
- [Immunohistochemistry](#)
- [Immunofluorescence](#)
- [Immunoprecipitation](#)
- [Flow Cytometry](#)
- [Cell Culture](#)

## ESD Antibody (Center) - Images



Western blot analysis of lysates from Jurkat, K562 cell line, mouse stomach and rat stomach tissue (from left to right), using ESD Antibody (Center) (Cat. #AP20553c). AP20553c was diluted at 1:1000 at each lane. A goat anti-rabbit(HRP) at 1:5000 dilution was used as the secondary antibody. Lysates at 35ug per lane.

## ESD Antibody (Center) - Background

Serine hydrolase involved in the detoxification of formaldehyde.

## ESD Antibody (Center) - References

- Lee E.Y.-H.P., et al. Proc. Natl. Acad. Sci. U.S.A. 83:6337-6341(1986).  
Young L.-J.S., et al. Hum. Genet. 79:137-141(1988).  
Hu R.-M., et al. Proc. Natl. Acad. Sci. U.S.A. 97:9543-9548(2000).  
Kalnine N., et al. Submitted (MAY-2003) to the EMBL/GenBank/DDBJ databases.  
Dunham A., et al. Nature 428:522-528(2004).