

**IQCF6 Antibody (N-term)**  
**Purified Rabbit Polyclonal Antibody (Pab)**  
**Catalog # AP20551a**

**Specification**

---

**IQCF6 Antibody (N-term) - Product Information**

Application	WB,E
Primary Accession	<a href="#">A8MYZ5</a>
Reactivity	Human
Host	Rabbit
Clonality	Polyclonal
Isotype	Rabbit IgG
Calculated MW	13059
Antigen Region	1-30

**IQCF6 Antibody (N-term) - Additional Information**

**Gene ID** 440956

**Other Names**

IQ domain-containing protein F6, IQCF6

**Target/Specificity**

This IQCF6 antibody is generated from a rabbit immunized with a KLH conjugated synthetic peptide between 1-30 amino acids from the N-terminal region of human IQCF6.

**Dilution**

WB~~1:1000

**Format**

Purified polyclonal antibody supplied in PBS with 0.09% (W/V) sodium azide. This antibody is purified through a protein A column, followed by peptide affinity purification.

**Storage**

Maintain refrigerated at 2-8°C for up to 2 weeks. For long term storage store at -20°C in small aliquots to prevent freeze-thaw cycles.

**Precautions**

IQCF6 Antibody (N-term) is for research use only and not for use in diagnostic or therapeutic procedures.

**IQCF6 Antibody (N-term) - Protein Information**

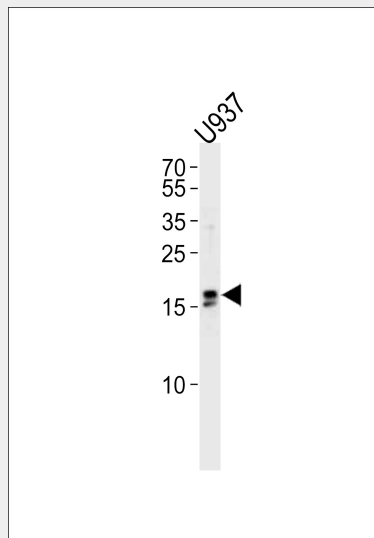
**Name** IQCF6

**IQCF6 Antibody (N-term) - Protocols**

Provided below are standard protocols that you may find useful for product applications.

- [Western Blot](#)
- [Blocking Peptides](#)
- [Dot Blot](#)
- [Immunohistochemistry](#)
- [Immunofluorescence](#)
- [Immunoprecipitation](#)
- [Flow Cytometry](#)
- [Cell Culture](#)

#### **IQCF6 Antibody (N-term) - Images**



Western blot analysis of lysate from U937 cell line, using IQCF6 Antibody (N-term)(Cat. #AP20551a). AP20551a was diluted at 1:1000 at each lane. A goat anti-rabbit IgG H&L(HRP) at 1:5000 dilution was used as the secondary antibody. Lysate at 35ug per lane.

#### **IQCF6 Antibody (N-term) - References**

Muzny D.M., et al. Nature 440:1194-1198(2006).