

**NDUFA9 Antibody (Center)**  
**Affinity Purified Rabbit Polyclonal Antibody (Pab)**  
**Catalog # AP20542c****Specification**

---

**NDUFA9 Antibody (Center) - Product Information**

Application	WB,E
Primary Accession	<a href="#">Q16795</a>
Reactivity	Human, Mouse
Host	Rabbit
Clonality	Polyclonal
Isotype	Rabbit IgG
Calculated MW	42510
Antigen Region	99-121

**NDUFA9 Antibody (Center) - Additional Information****Gene ID** 4704**Other Names**

NADH dehydrogenase [ubiquinone] 1 alpha subcomplex subunit 9, mitochondrial, Complex I-39kD, CI-39kD, NADH-ubiquinone oxidoreductase 39 kDa subunit, NDUFA9, NDUFS2L

**Target/Specificity**

This NDUFA9 antibody is generated from rabbits immunized with a KLH conjugated synthetic peptide between 99-121 amino acids from the Central region of human NDUFA9.

**Dilution**

WB~~1:1000

**Format**

Purified polyclonal antibody supplied in PBS with 0.09% (W/V) sodium azide. This antibody is purified through a protein A column, followed by peptide affinity purification.

**Storage**

Maintain refrigerated at 2-8°C for up to 2 weeks. For long term storage store at -20°C in small aliquots to prevent freeze-thaw cycles.

**Precautions**

NDUFA9 Antibody (Center) is for research use only and not for use in diagnostic or therapeutic procedures.

**NDUFA9 Antibody (Center) - Protein Information****Name** NDUFA9**Synonyms** NDUFS2L

**Function** Accessory subunit of the mitochondrial membrane respiratory chain NADH dehydrogenase (Complex I), that is believed not to be involved in catalysis. Required for proper complex I assembly (PubMed:[28671271](#)). Complex I functions in the transfer of electrons from NADH to the respiratory chain. The immediate electron acceptor for the enzyme is believed to be ubiquinone.

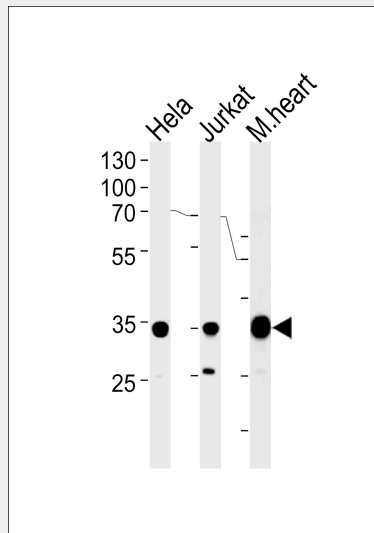
**Cellular Location**  
Mitochondrion matrix

### NDUFA9 Antibody (Center) - Protocols

Provided below are standard protocols that you may find useful for product applications.

- [Western Blot](#)
- [Blocking Peptides](#)
- [Dot Blot](#)
- [Immunohistochemistry](#)
- [Immunofluorescence](#)
- [Immunoprecipitation](#)
- [Flow Cytometry](#)
- [Cell Culture](#)

### NDUFA9 Antibody (Center) - Images



NDUFA9 Antibody (Center) (Cat. #AP20542c) western blot analysis in HeLa, Jurkat cell line and mouse heart tissue lysates (35ug/lane). This demonstrates the NDUFA9 antibody detected the NDUFA9 protein (arrow).

### NDUFA9 Antibody (Center) - Background

Accessory subunit of the mitochondrial membrane respiratory chain NADH dehydrogenase (Complex I), that is believed not to be involved in catalysis. Complex I functions in the transfer of electrons from NADH to the respiratory chain. The immediate electron acceptor for the enzyme is believed to be ubiquinone.

### NDUFA9 Antibody (Center) - References

Baens M., et al. Genomics 16:214-218(1993).  
Loeffen J.L.C.M., et al. Submitted (FEB-1998) to the EMBL/GenBank/DDBJ databases.  
Cross S.H., et al. Nat. Genet. 6:236-244(1994).  
Murray J., et al. J. Biol. Chem. 278:13619-13622(2003).  
Burkard T.R., et al. BMC Syst. Biol. 5:17-17(2011).