

**STX1B Antibody (N-term)**  
**Affinity Purified Rabbit Polyclonal Antibody (Pab)**  
**Catalog # AP20532a**

**Specification**

---

**STX1B Antibody (N-term) - Product Information**

Application	WB,E
Primary Accession	<a href="#">P61266</a>
Other Accession	<a href="#">P61265</a> , <a href="#">P61264</a> , <a href="#">P61267</a> , <a href="#">P61268</a>
Reactivity	Human
Predicted	Bovine, Mouse, Rat, Sheep
Host	Rabbit
Clonality	Polyclonal
Isotype	Rabbit IgG
Calculated MW	33245
Antigen Region	1-30

**STX1B Antibody (N-term) - Additional Information**

**Gene ID** 112755

**Other Names**

Syntaxin-1B, Syntaxin-1B1, Syntaxin-1B2, STX1B, STX1B1, STX1B2

**Target/Specificity**

This STX1B antibody is generated from rabbits immunized with a KLH conjugated synthetic peptide between 1-30 amino acids from the N-terminal region of human STX1B.

**Dilution**

WB~~1:1000

**Format**

Purified polyclonal antibody supplied in PBS with 0.09% (W/V) sodium azide. This antibody is purified through a protein A column, followed by peptide affinity purification.

**Storage**

Maintain refrigerated at 2-8°C for up to 2 weeks. For long term storage store at -20°C in small aliquots to prevent freeze-thaw cycles.

**Precautions**

STX1B Antibody (N-term) is for research use only and not for use in diagnostic or therapeutic procedures.

**STX1B Antibody (N-term) - Protein Information**

**Name** STX1B

**Synonyms** STX1B1, STX1B2

**Function** Potentially involved in docking of synaptic vesicles at presynaptic active zones. May mediate Ca(2+)-regulation of exocytosis acrosomal reaction in sperm (By similarity).

**Cellular Location**

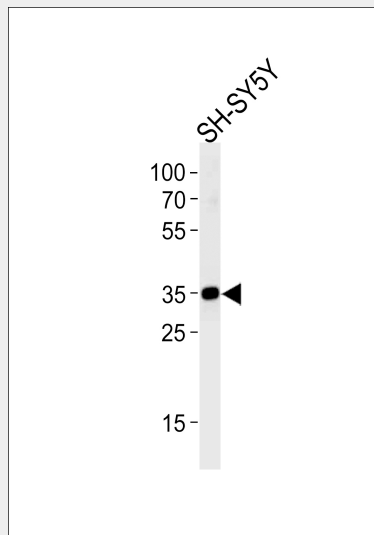
[Isoform 1]: Membrane; Single-pass type IV membrane protein

**STX1B Antibody (N-term) - Protocols**

Provided below are standard protocols that you may find useful for product applications.

- [Western Blot](#)
- [Blocking Peptides](#)
- [Dot Blot](#)
- [Immunohistochemistry](#)
- [Immunofluorescence](#)
- [Immunoprecipitation](#)
- [Flow Cytometry](#)
- [Cell Culture](#)

**STX1B Antibody (N-term) - Images**



STX1B Antibody (N-term) (Cat. #AP20532a) western blot analysis in SH-SY5Y cell line lysates (35ug/lane). This demonstrates the STX1B antibody detected the STX1B protein (arrow).

**STX1B Antibody (N-term) - Background**

Potentially involved in docking of synaptic vesicles at presynaptic active zones. May mediate Ca(2+)-regulation of exocytosis acrosomal reaction in sperm (By similarity).

**STX1B Antibody (N-term) - References**

Fujiwara T., et al. Submitted (AUG-1994) to the EMBL/GenBank/DDBJ databases.  
Gastaldi M., et al. Submitted (MAR-2001) to the EMBL/GenBank/DDBJ databases.