

**EPM2AIP1 Antibody (N-term)**  
**Affinity Purified Rabbit Polyclonal Antibody (Pab)**  
**Catalog # AP20528a**

## Specification

---

### EPM2AIP1 Antibody (N-term) - Product Information

Application	WB,E
Primary Accession	<a href="#">O7L775</a>
Other Accession	<a href="#">O8VEH5</a>
Reactivity	Human, Mouse
Host	Rabbit
Clonality	Polyclonal
Isotype	Rabbit IgG
Calculated MW	70370
Antigen Region	39-62

### EPM2AIP1 Antibody (N-term) - Additional Information

**Gene ID** 9852

#### Other Names

EPM2A-interacting protein 1, Laforin-interacting protein, EPM2AIP1, KIAA0766

#### Target/Specificity

This EPM2AIP1 antibody is generated from rabbits immunized with a KLH conjugated synthetic peptide between 39-62 amino acids from the N-terminal region of human EPM2AIP1.

#### Dilution

WB~~1:1000

#### Format

Purified polyclonal antibody supplied in PBS with 0.09% (W/V) sodium azide. This antibody is purified through a protein A column, followed by peptide affinity purification.

#### Storage

Maintain refrigerated at 2-8°C for up to 2 weeks. For long term storage store at -20°C in small aliquots to prevent freeze-thaw cycles.

#### Precautions

EPM2AIP1 Antibody (N-term) is for research use only and not for use in diagnostic or therapeutic procedures.

### EPM2AIP1 Antibody (N-term) - Protein Information

**Name** EPM2AIP1

**Synonyms** KIAA0766

### Cellular Location

Endoplasmic reticulum

### Tissue Location

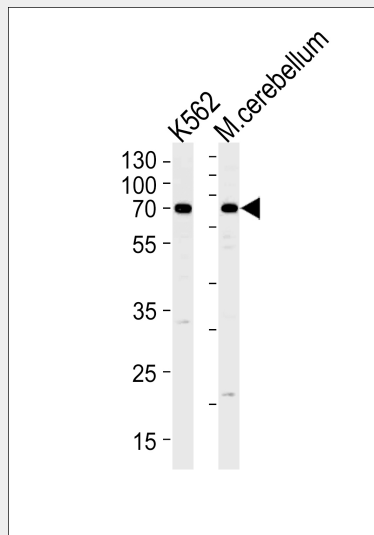
Expressed in heart, brain, placenta, liver, pancreas, kidney and skeletal muscle.

### EPM2AIP1 Antibody (N-term) - Protocols

Provided below are standard protocols that you may find useful for product applications.

- [Western Blot](#)
- [Blocking Peptides](#)
- [Dot Blot](#)
- [Immunohistochemistry](#)
- [Immunofluorescence](#)
- [Immunoprecipitation](#)
- [Flow Cytometry](#)
- [Cell Culture](#)

### EPM2AIP1 Antibody (N-term) - Images



EPM2AIP1 Antibody (N-term) (Cat. #AP20528a) western blot analysis in K562 cell line and mouse cerebellum tissue lysates (35ug/lane). This demonstrates the EPM2AIP1 antibody detected the EPM2AIP1 protein (arrow).

### EPM2AIP1 Antibody (N-term) - References

- Ianzano L., et al. Genomics 81:579-587(2003).  
Mao Y.M., et al. Submitted (APR-1998) to the EMBL/GenBank/DDBJ databases.  
Nagase T., et al. DNA Res. 5:277-286(1998).  
Daub H., et al. Mol. Cell 31:438-448(2008).