

**CMAS Antibody (C-term)**  
**Affinity Purified Rabbit Polyclonal Antibody (Pab)**  
**Catalog # AP20526b**

**Specification**

---

**CMAS Antibody (C-term) - Product Information**

Application	WB,E
Primary Accession	<a href="#">Q8NFW8</a>
Other Accession	<a href="#">P69060</a> , <a href="#">Q99KK2</a> , <a href="#">Q3SZM5</a>
Reactivity	Human
Predicted	Bovine, Mouse, Rat
Host	Rabbit
Clonality	Polyclonal
Isotype	Rabbit IgG
Calculated MW	48379
Antigen Region	300-327

**CMAS Antibody (C-term) - Additional Information**

**Gene ID** 55907

**Other Names**

N-acetylneuraminase cytidyltransferase, CMP-N-acetylneuraminic acid synthase, CMP-NeuNAc synthase, CMAS

**Target/Specificity**

This CMAS antibody is generated from rabbits immunized with a KLH conjugated synthetic peptide between 300-327 amino acids from the C-terminal region of human CMAS.

**Dilution**

WB~~1:1000

**Format**

Purified polyclonal antibody supplied in PBS with 0.09% (W/V) sodium azide. This antibody is purified through a protein A column, followed by peptide affinity purification.

**Storage**

Maintain refrigerated at 2-8°C for up to 2 weeks. For long term storage store at -20°C in small aliquots to prevent freeze-thaw cycles.

**Precautions**

CMAS Antibody (C-term) is for research use only and not for use in diagnostic or therapeutic procedures.

**CMAS Antibody (C-term) - Protein Information**

**Name** CMAS

**Function** Catalyzes the activation of N-acetylneuraminic acid (NeuNAc) to cytidine 5'-monophosphate N-acetylneuraminic acid (CMP-NeuNAc), a substrate required for the addition of sialic acid. Has some activity toward NeuNAc, N-glycolylneuraminic acid (Neu5Gc) or 2-keto-3-deoxy-D- glycerol-3-phospho-D-galactononic acid (KDN).

#### Cellular Location

Nucleus.

#### Tissue Location

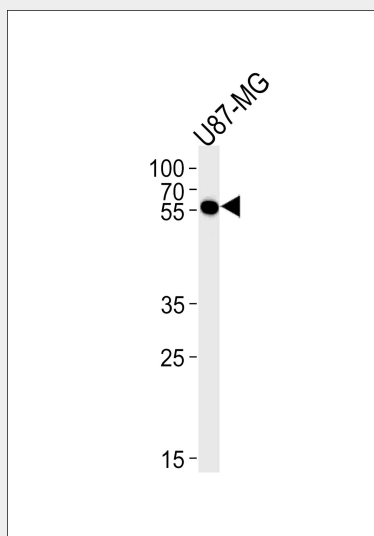
Ubiquitously expressed. Expressed in pancreas, kidney, liver, skeletal muscle, lung, placenta, brain, heart, colon, PBL, small intestine, ovary, testis, prostate, thymus and spleen

### CMAS Antibody (C-term) - Protocols

Provided below are standard protocols that you may find useful for product applications.

- [Western Blot](#)
- [Blocking Peptides](#)
- [Dot Blot](#)
- [Immunohistochemistry](#)
- [Immunofluorescence](#)
- [Immunoprecipitation](#)
- [Flow Cytometry](#)
- [Cell Culture](#)

### CMAS Antibody (C-term) - Images



CMAS Antibody (C-term) (Cat. #AP20526b) western blot analysis in U87-MG cell line lysates (35ug/lane). This demonstrates the CMAS antibody detected the CMAS protein (arrow).

### CMAS Antibody (C-term) - Background

Catalyzes the activation of N-acetylneuraminic acid (NeuNAc) to cytidine 5'-monophosphate N-acetylneuraminic acid (CMP-NeuNAc), a substrate required for the addition of sialic acid. Has some activity toward NeuNAc, N-glycolylneuraminic acid (Neu5Gc) or 2-keto-3-deoxy-D-glycerol-3-phospho-D-galactononic acid (KDN).

**CMAS Antibody (C-term) - References**

- Lawrence S.M., et al. Glycoconj. J. 18:205-213(2001).  
Bouquin T., et al. Submitted (MAY-2000) to the EMBL/GenBank/DDBJ databases.  
Ota T., et al. Nat. Genet. 36:40-45(2004).  
Bechtel S., et al. BMC Genomics 8:399-399(2007).  
Bienvenut W.V., et al. Submitted (AUG-2009) to UniProtKB.