

APOA2 Antibody (Center)
Affinity Purified Rabbit Polyclonal Antibody (Pab)
Catalog # AP20525c**Specification**

APOA2 Antibody (Center) - Product Information

Application	WB,E
Primary Accession	P02652
Other Accession	P18656
Reactivity	Human
Predicted	Monkey
Host	Rabbit
Clonality	Polyclonal
Isotype	Rabbit IgG
Calculated MW	11175
Antigen Region	23-56

APOA2 Antibody (Center) - Additional Information**Gene ID** 336**Other Names**

Apolipoprotein A-II, Apo-AII, ApoA-II, Apolipoprotein A2, Proapolipoprotein A-II, ProapoA-II, Truncated apolipoprotein A-II, Apolipoprotein A-II(1-76), APOA2

Target/Specificity

This APOA2 antibody is generated from rabbits immunized with a KLH conjugated synthetic peptide between 23-56 amino acids from the Central region of human APOA2.

Dilution

WB~~1:1000

Format

Purified polyclonal antibody supplied in PBS with 0.09% (W/V) sodium azide. This antibody is purified through a protein A column, followed by peptide affinity purification.

Storage

Maintain refrigerated at 2-8°C for up to 2 weeks. For long term storage store at -20°C in small aliquots to prevent freeze-thaw cycles.

Precautions

APOA2 Antibody (Center) is for research use only and not for use in diagnostic or therapeutic procedures.

APOA2 Antibody (Center) - Protein Information**Name** APOA2

Function May stabilize HDL (high density lipoprotein) structure by its association with lipids, and affect the HDL metabolism.

Cellular Location

Secreted.

Tissue Location

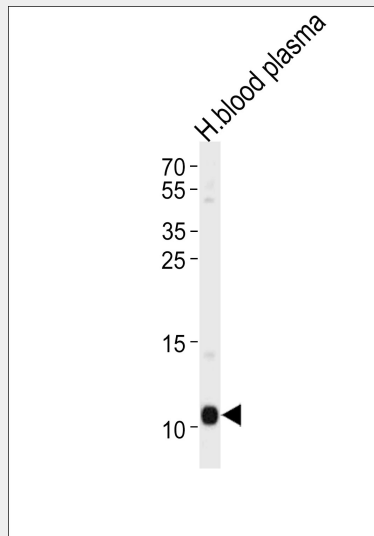
Plasma; synthesized in the liver and intestine.

APOA2 Antibody (Center) - Protocols

Provided below are standard protocols that you may find useful for product applications.

- [Western Blot](#)
- [Blocking Peptides](#)
- [Dot Blot](#)
- [Immunohistochemistry](#)
- [Immunofluorescence](#)
- [Immunoprecipitation](#)
- [Flow Cytometry](#)
- [Cell Culture](#)

APOA2 Antibody (Center) - Images



APOA2 Antibody (Center) (Cat. #AP20525c) western blot analysis in human blood plasma tissue lysates (35ug/lane). This demonstrates the APOA2 antibody detected the APOA2 protein (arrow).

APOA2 Antibody (Center) - Background

May stabilize HDL (high density lipoprotein) structure by its association with lipids, and affect the HDL metabolism.

APOA2 Antibody (Center) - References

- Knott T.J., et al. Biochem. Biophys. Res. Commun. 120:734-740(1984).
Moore M.N., et al. Biochem. Biophys. Res. Commun. 123:1-7(1984).
Sharpe C.R., et al. Nucleic Acids Res. 12:3917-3932(1984).

Lackner K.J., et al. Nucleic Acids Res. 13:4597-4608(1985).
Knott T.J., et al. Nucleic Acids Res. 13:6387-6398(1985).