

M Gpr68 Antibody (Center)
Affinity Purified Rabbit Polyclonal Antibody (Pab)
Catalog # AP20524c

Specification

M Gpr68 Antibody (Center) - Product Information

Application	WB,E
Primary Accession	Q8BFQ3
Other Accession	Q15743 , Q46685
Reactivity	Mouse
Predicted	Bovine, Human
Host	Rabbit
Clonality	Polyclonal
Isotype	Rabbit IgG
Calculated MW	41209
Antigen Region	200-225

M Gpr68 Antibody (Center) - Additional Information

Gene ID 238377

Other Names

Ovarian cancer G-protein coupled receptor 1, G-protein coupled receptor 68,
Sphingosylphosphorylcholine receptor, Gpr68, Ogr1

Target/Specificity

This Mouse Gpr68 antibody is generated from rabbits immunized with a KLH conjugated synthetic peptide between 200-225 amino acids from the Central region of mouse Gpr68.

Dilution

WB~~1:1000

Format

Purified polyclonal antibody supplied in PBS with 0.09% (W/V) sodium azide. This antibody is purified through a protein A column, followed by peptide affinity purification.

Storage

Maintain refrigerated at 2-8°C for up to 2 weeks. For long term storage store at -20°C in small aliquots to prevent freeze-thaw cycles.

Precautions

M Gpr68 Antibody (Center) is for research use only and not for use in diagnostic or therapeutic procedures.

M Gpr68 Antibody (Center) - Protein Information

Name Gpr68

Synonyms Ogr1

Function Proton-sensing receptor involved in pH homeostasis. May represents an osteoblastic pH sensor regulating cell-mediated responses to acidosis in bone. Mediates its action by association with G proteins that stimulates inositol phosphate (IP) production or Ca^{2+} mobilization. The receptor is almost silent at pH 7.8 but fully activated at pH 6.8. Also functions as a metastasis suppressor gene in prostate cancer.

Cellular Location

Cell membrane; Multi-pass membrane protein.

Tissue Location

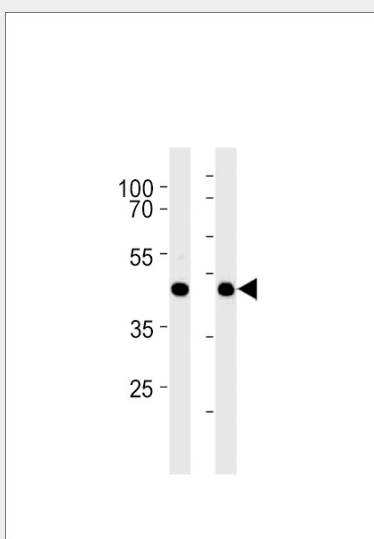
Expressed in the lung, testis, heart, brain, spleen, thymus, brown fat, small intestine, colon, peripheral blood leukocytes, macrophages, stomach, ovary and white fat but not in the liver, kidney, and skeletal muscle. Expression in the prostate is weak but detectable.

M Gpr68 Antibody (Center) - Protocols

Provided below are standard protocols that you may find useful for product applications.

- [Western Blot](#)
- [Blocking Peptides](#)
- [Dot Blot](#)
- [Immunohistochemistry](#)
- [Immunofluorescence](#)
- [Immunoprecipitation](#)
- [Flow Cytometry](#)
- [Cell Culture](#)

M Gpr68 Antibody (Center) - Images



Mouse Gpr68 Antibody (Center) (Cat. #AP20524c) western blot analysis in mouse liver and heart tissue lysates (35ug/lane). This demonstrates the Mouse Gpr68 antibody detected the Mouse Gpr68 protein (arrow).

M Gpr68 Antibody (Center) - Background

Proton-sensing receptor involved in pH homeostasis. May represents an osteoblastic pH sensor regulating cell-mediated responses to acidosis in bone. Mediates its action by association with G proteins that stimulates inositol phosphate (IP) production or Ca(2+) mobilization. The receptor is almost silent at pH 7.8 but fully activated at pH 6.8. Function also as a metastasis suppressor gene in prostate cancer.

M Gpr68 Antibody (Center) - References

Carninci P., et al. Science 309:1559-1563(2005).
Vassilatis D.K., et al. Proc. Natl. Acad. Sci. U.S.A. 100:4903-4908(2003).
Singh L.S., et al. J. Natl. Cancer Inst. 99:1313-1327(2007).
Frick K.K., et al. J. Bone Miner. Res. 24:305-313(2009).
Li H., et al. PLoS ONE 4:E5705-E5705(2009).