

OR1L3 Antibody (C-term)
Affinity Purified Rabbit Polyclonal Antibody (Pab)
Catalog # AP20522b

Specification

OR1L3 Antibody (C-term) - Product Information

Application	WB,E
Primary Accession	Q8NH93
Reactivity	Human
Host	Rabbit
Clonality	Polyclonal
Isotype	Rabbit IgG
Calculated MW	36633
Antigen Region	290-320

OR1L3 Antibody (C-term) - Additional Information

Gene ID 26735

Other Names

Olfactory receptor 1L3, Olfactory receptor 9-D, OR9-D, Olfactory receptor OR9-28, OR1L3

Target/Specificity

This OR1L3 antibody is generated from rabbits immunized with a KLH conjugated synthetic peptide between 290-320 amino acids from the C-terminal region of human OR1L3.

Dilution

WB~~1:1000

Format

Purified polyclonal antibody supplied in PBS with 0.09% (W/V) sodium azide. This antibody is purified through a protein A column, followed by peptide affinity purification.

Storage

Maintain refrigerated at 2-8°C for up to 2 weeks. For long term storage store at -20°C in small aliquots to prevent freeze-thaw cycles.

Precautions

OR1L3 Antibody (C-term) is for research use only and not for use in diagnostic or therapeutic procedures.

OR1L3 Antibody (C-term) - Protein Information

Name OR1L3

Function Odorant receptor.

Cellular Location

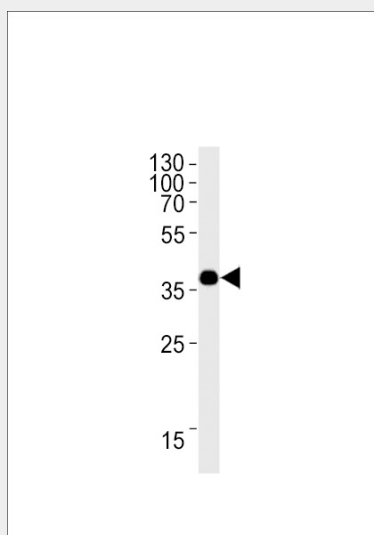
Cell membrane; Multi-pass membrane protein.

OR1L3 Antibody (C-term) - Protocols

Provided below are standard protocols that you may find useful for product applications.

- [Western Blot](#)
- [Blocking Peptides](#)
- [Dot Blot](#)
- [Immunohistochemistry](#)
- [Immunofluorescence](#)
- [Immunoprecipitation](#)
- [Flow Cytometry](#)
- [Cell Culture](#)

OR1L3 Antibody (C-term) - Images



OR1L3 Antibody (C-term) (Cat. #AP20522b) western blot analysis in HepG2 cell line lysates (35ug/lane). This demonstrates the OR1L3 antibody detected the OR1L3 protein (arrow).

OR1L3 Antibody (C-term) - Background

Odorant receptor (Potential).

OR1L3 Antibody (C-term) - References

- Suwa M., et al. Submitted (JUL-2001) to the EMBL/GenBank/DDBJ databases.
Humphray S.J., et al. Nature 429:369-374(2004).
Mural R.J., et al. Submitted (JUL-2005) to the EMBL/GenBank/DDBJ databases.
Malnic B., et al. Proc. Natl. Acad. Sci. U.S.A. 101:2584-2589(2004).
Malnic B., et al. Proc. Natl. Acad. Sci. U.S.A. 101:7205-7205(2004).