

OR51E1 Antibody (C-term)
Affinity Purified Rabbit Polyclonal Antibody (Pab)
Catalog # AP20521b**Specification**

OR51E1 Antibody (C-term) - Product Information

Application	WB,E
Primary Accession	Q8TCB6
Reactivity	Human
Host	Rabbit
Clonality	Polyclonal
Isotype	Rabbit IgG
Calculated MW	35402
Antigen Region	280-309

OR51E1 Antibody (C-term) - Additional Information**Gene ID** 143503**Other Names**

Olfactory receptor 51E1, D-GPCR, G-protein coupled receptor 164, Olfactory receptor 52A3, Prostate-overexpressed G protein-coupled receptor, Prostate-specific G protein-coupled receptor 2, OR51E1, GPR164, OR51E1P, OR52A3P, POGR, PSGR2

Target/Specificity

This OR51E1 antibody is generated from rabbits immunized with a KLH conjugated synthetic peptide between 280-309 amino acids from the C-terminal region of human OR51E1.

Dilution

WB~~1:1000

Format

Purified polyclonal antibody supplied in PBS with 0.09% (W/V) sodium azide. This antibody is purified through a protein A column, followed by peptide affinity purification.

Storage

Maintain refrigerated at 2-8°C for up to 2 weeks. For long term storage store at -20°C in small aliquots to prevent freeze-thaw cycles.

Precautions

OR51E1 Antibody (C-term) is for research use only and not for use in diagnostic or therapeutic procedures.

OR51E1 Antibody (C-term) - Protein Information**Name** OR51E1**Synonyms** GPR164, OR51E1P, OR52A3P, POGR, PSGR2

Function Odorant receptor.

Cellular Location

Cell membrane; Multi-pass membrane protein

Tissue Location

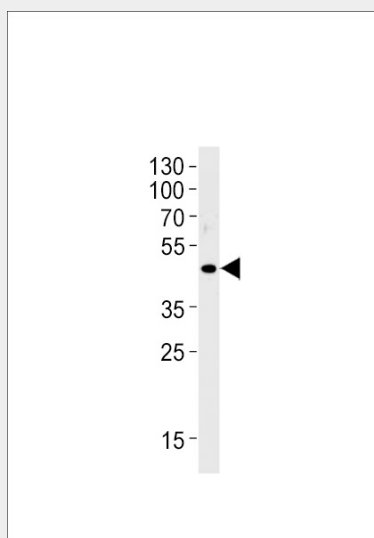
Highly expressed in prostate. Very low levels may be detected in some other tissues, such as placenta, skeletal muscle, heart, ovary and testis. Up-regulated in prostate cancers

OR51E1 Antibody (C-term) - Protocols

Provided below are standard protocols that you may find useful for product applications.

- [Western Blot](#)
- [Blocking Peptides](#)
- [Dot Blot](#)
- [Immunohistochemistry](#)
- [Immunofluorescence](#)
- [Immunoprecipitation](#)
- [Flow Cytometry](#)
- [Cell Culture](#)

OR51E1 Antibody (C-term) - Images



OR51E1 Antibody (C-term) (Cat. #AP20521b) western blot analysis in LNCaP cell line lysates (35ug/lane). This demonstrates the OR51E1 antibody detected the OR51E1 protein (arrow).

OR51E1 Antibody (C-term) - Background

Odorant receptor (Potential).

OR51E1 Antibody (C-term) - References

- Weigle B., et al. Biochem. Biophys. Res. Commun. 322:239-249(2004).
Suwa M., et al. Submitted (JUL-2001) to the EMBL/GenBank/DBJ databases.
Weng J., et al. Int. J. Cancer 118:1471-1480(2006).
Ota T., et al. Nat. Genet. 36:40-45(2004).

Mural R.J., et al. Submitted (SEP-2005) to the EMBL/GenBank/DDBJ databases.