

**PRLR Antibody (Center)**  
**Affinity Purified Rabbit Polyclonal Antibody (Pab)**  
**Catalog # AP20518c**

**Specification**

---

**PRLR Antibody (Center) - Product Information**

Application	<b>WB,E</b>
Primary Accession	<a href="#">P16471</a>
Reactivity	<b>Human</b>
Host	<b>Rabbit</b>
Clonality	<b>Polyclonal</b>
Isotype	<b>Rabbit IgG</b>
Calculated MW	<b>69506</b>
Antigen Region	<b>147-179</b>

**PRLR Antibody (Center) - Additional Information**

**Gene ID** 5618

**Other Names**

Prolactin receptor, PRL-R, PRLR

**Target/Specificity**

This PRLR antibody is generated from rabbits immunized with a KLH conjugated synthetic peptide between 147-179 amino acids from the Central region of human PRLR.

**Dilution**

WB~~1:1000

**Format**

Purified polyclonal antibody supplied in PBS with 0.09% (W/V) sodium azide. This antibody is purified through a protein A column, followed by peptide affinity purification.

**Storage**

Maintain refrigerated at 2-8°C for up to 2 weeks. For long term storage store at -20°C in small aliquots to prevent freeze-thaw cycles.

**Precautions**

PRLR Antibody (Center) is for research use only and not for use in diagnostic or therapeutic procedures.

**PRLR Antibody (Center) - Protein Information**

**Name** PRLR

**Function** This is a receptor for the anterior pituitary hormone prolactin (PRL). Acts as a prosurvival factor for spermatozoa by inhibiting sperm capacitation through suppression of SRC kinase activation and stimulation of AKT. Isoform 4 is unable to transduce prolactin signaling.

Isoform 6 is unable to transduce prolactin signaling.

#### Cellular Location

Membrane; Single-pass type I membrane protein

#### Tissue Location

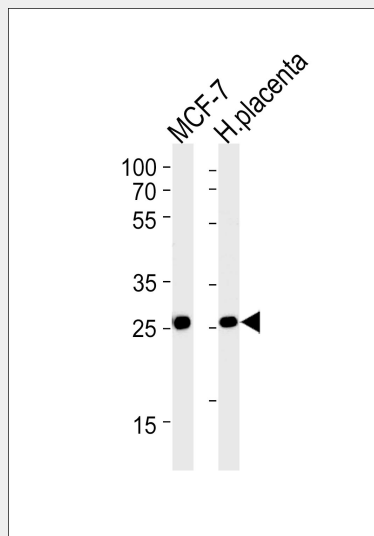
Expressed in breast, placenta, kidney, liver and pancreas.

### PRLR Antibody (Center) - Protocols

Provided below are standard protocols that you may find useful for product applications.

- [Western Blot](#)
- [Blocking Peptides](#)
- [Dot Blot](#)
- [Immunohistochemistry](#)
- [Immunofluorescence](#)
- [Immunoprecipitation](#)
- [Flow Cytometry](#)
- [Cell Culture](#)

### PRLR Antibody (Center) - Images



PRLR Antibody (Center) (Cat. #AP20518c) western blot analysis in MCF-7 cell line and human placenta tissue lysates (35ug/lane). This demonstrates the PRLR antibody detected the PRLR protein (arrow).

### PRLR Antibody (Center) - Background

This is a receptor for the anterior pituitary hormone prolactin (PRL). Isoform 4 is unable to transduce prolactin signaling. Isoform 6 is unable to transduce prolactin signaling.

### PRLR Antibody (Center) - References

- Boutin J.-M., et al. Mol. Endocrinol. 3:1455-1461(1989).  
Kline J.B., et al. J. Biol. Chem. 274:35461-35468(1999).  
Hu Z.-Z., et al. J. Clin. Endocrinol. Metab. 84:1153-1156(1999).

Hu Z.Z., et al. J. Biol. Chem. 276:41086-41094(2001).  
Kline J.B., et al. Mol. Endocrinol. 16:2310-2322(2002).