

**R Ccdc89 Antibody (Center)**  
**Affinity Purified Rabbit Polyclonal Antibody (Pab)**  
**Catalog # AP20514c**

**Specification**

---

**R Ccdc89 Antibody (Center) - Product Information**

Application	WB,E
Primary Accession	<a href="#">B2RZ86</a>
Reactivity	Human, Mouse, Rat
Host	Rabbit
Clonality	Polyclonal
Isotype	Rabbit IgG
Calculated MW	43453
Antigen Region	114-145

**R Ccdc89 Antibody (Center) - Additional Information**

**Gene ID** 293107

**Other Names**

Coiled-coil domain-containing protein 89 {ECO:0000312|RGD:1305335}, Bc8 orange-interacting protein, Ccdc89 {ECO:0000312|EMBL:AAI670631, ECO:0000312|RGD:1305335}

**Target/Specificity**

This Rat Ccdc89 antibody is generated from rabbits immunized with a KLH conjugated synthetic peptide between 114-145 amino acids from the Central region of rat Ccdc89.

**Dilution**

WB~~1:1000

**Format**

Purified polyclonal antibody supplied in PBS with 0.09% (W/V) sodium azide. This antibody is purified through a protein A column, followed by peptide affinity purification.

**Storage**

Maintain refrigerated at 2-8°C for up to 2 weeks. For long term storage store at -20°C in small aliquots to prevent freeze-thaw cycles.

**Precautions**

R Ccdc89 Antibody (Center) is for research use only and not for use in diagnostic or therapeutic procedures.

**R Ccdc89 Antibody (Center) - Protein Information**

**Name** Ccdc89 {ECO:0000312|EMBL:AAI67063.1, ECO:0000312|RGD:1305335}

**Cellular Location**

Cytoplasm {ECO:0000250|UniProtKB:Q7ZW57}. Nucleus {ECO:0000250|UniProtKB:Q7ZW57}.

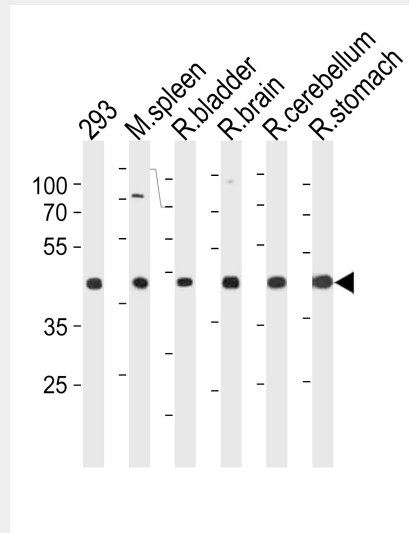
Note=Uniformly distributed within the cell, but becomes recruited to the nucleus upon binding to HEY1 {ECO:0000250|UniProtKB:Q7ZW57}

## R Ccdc89 Antibody (Center) - Protocols

Provided below are standard protocols that you may find useful for product applications.

- [Western Blot](#)
- [Blocking Peptides](#)
- [Dot Blot](#)
- [Immunohistochemistry](#)
- [Immunofluorescence](#)
- [Immunoprecipitation](#)
- [Flow Cytometry](#)
- [Cell Culture](#)

## R Ccdc89 Antibody (Center) - Images



Rat Ccdc89 Antibody (Center) (Cat. #AP20514c) western blot analysis in 293 cell line, mouse spleen, rat bladder, brain, cerebellum and stomach tissue lysates (35ug/lane). This demonstrates the rat Ccdc89 antibody detected the rat Ccdc89 protein (arrow).

## R Ccdc89 Antibody (Center) - Background

The function of this protein is unknown.

## R Ccdc89 Antibody (Center) - References

Van Wayenbergh R., et al. Dev. Dyn. 228:716-725(2003).