

C2orf74 Antibody (C-term)
Affinity Purified Rabbit Polyclonal Antibody (Pab)
Catalog # AP20506b**Specification**

C2orf74 Antibody (C-term) - Product Information

Application	WB,E
Primary Accession	A8MZ97
Reactivity	Human
Host	Rabbit
Clonality	Polyclonal
Isotype	Rabbit IgG
Calculated MW	21174
Antigen Region	164-194

C2orf74 Antibody (C-term) - Additional Information**Other Names**

Uncharacterized protein C2orf74, C2orf74

Target/Specificity

This C2orf74 antibody is generated from rabbits immunized with a KLH conjugated synthetic peptide between 164-194 amino acids from the C-terminal region of human C2orf74.

Dilution

WB~~1:1000

Format

Purified polyclonal antibody supplied in PBS with 0.09% (W/V) sodium azide. This antibody is purified through a protein A column, followed by peptide affinity purification.

Storage

Maintain refrigerated at 2-8°C for up to 2 weeks. For long term storage store at -20°C in small aliquots to prevent freeze-thaw cycles.

Precautions

C2orf74 Antibody (C-term) is for research use only and not for use in diagnostic or therapeutic procedures.

C2orf74 Antibody (C-term) - Protein Information

Name C2orf74

Cellular Location

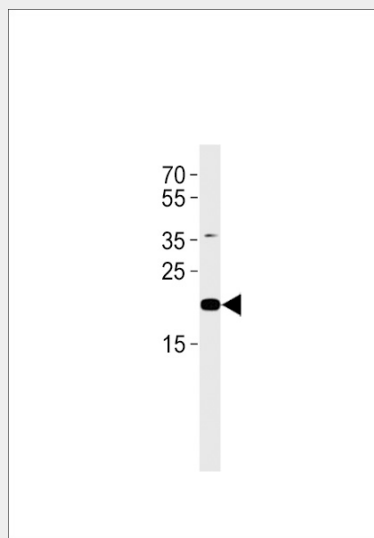
Membrane; Single-pass membrane protein

C2orf74 Antibody (C-term) - Protocols

Provided below are standard protocols that you may find useful for product applications.

- [Western Blot](#)
- [Blocking Peptides](#)
- [Dot Blot](#)
- [Immunohistochemistry](#)
- [Immunofluorescence](#)
- [Immunoprecipitation](#)
- [Flow Cytometry](#)
- [Cell Culture](#)

C2orf74 Antibody (C-term) - Images



C2orf74 Antibody (C-term) (Cat. #AP20506b) western blot analysis in human placenta tissue lysates (35ug/lane). This demonstrates the C2orf74 antibody detected the C2orf74 protein (arrow).

C2orf74 Antibody (C-term) - Background

The function of this protein is unknown.

C2orf74 Antibody (C-term) - References

Hillier L.W., et al. Nature 434:724-731(2005).