

FAM216B Antibody (C-term)
Affinity Purified Rabbit Polyclonal Antibody (Pab)
Catalog # AP20501b**Specification**

FAM216B Antibody (C-term) - Product Information

Application	WB,E
Primary Accession	Q8N7L0
Reactivity	Human
Host	Rabbit
Clonality	Polyclonal
Isotype	Rabbit IgG
Antigen Region	111-139

FAM216B Antibody (C-term) - Additional Information**Gene ID** 144809**Other Names**

Protein FAM216B, FAM216B, C13orf30

Target/Specificity

This C13orf30 antibody is generated from rabbits immunized with a KLH conjugated synthetic peptide between 111-139 amino acids from the C-terminal region of human C13orf30.

Dilution

WB~~1:1000

Format

Purified polyclonal antibody supplied in PBS with 0.09% (W/V) sodium azide. This antibody is purified through a protein A column, followed by peptide affinity purification.

Storage

Maintain refrigerated at 2-8°C for up to 2 weeks. For long term storage store at -20°C in small aliquots to prevent freeze-thaw cycles.

Precautions

FAM216B Antibody (C-term) is for research use only and not for use in diagnostic or therapeutic procedures.

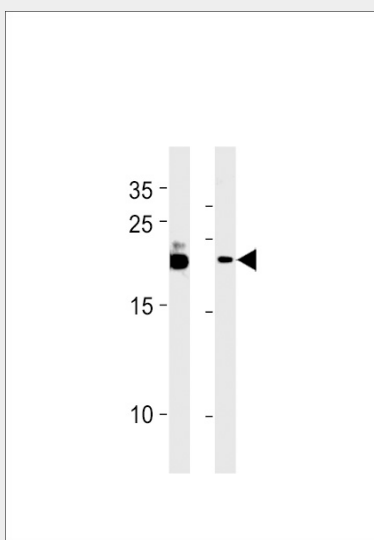
FAM216B Antibody (C-term) - Protein Information**Name** FAM216B**Synonyms** C13orf30

FAM216B Antibody (C-term) - Protocols

Provided below are standard protocols that you may find useful for product applications.

- [Western Blot](#)
- [Blocking Peptides](#)
- [Dot Blot](#)
- [Immunohistochemistry](#)
- [Immunofluorescence](#)
- [Immunoprecipitation](#)
- [Flow Cytometry](#)
- [Cell Culture](#)

FAM216B Antibody (C-term) - Images



C13orf30 Antibody (C-term) (Cat. #AP20501b) western blot analysis in B-3, MCF-7 cell line lysates (35ug/lane). This demonstrates the C13orf30 antibody detected the C13orf30 protein (arrow).

FAM216B Antibody (C-term) - References

- Ota T., et al. Nat. Genet. 36:40-45(2004).
Dunham A., et al. Nature 428:522-528(2004).
Mural R.J., et al. Submitted (JUL-2005) to the EMBL/GenBank/DDBJ databases.