

**ST7L Antibody (C-term)**  
**Affinity Purified Rabbit Polyclonal Antibody (Pab)**  
**Catalog # AP20500b****Specification**

---

**ST7L Antibody (C-term) - Product Information**

Application	WB,E
Primary Accession	<a href="#">Q8TDW4</a>
Reactivity	Human
Host	Rabbit
Clonality	Polyclonal
Isotype	Rabbit IgG
Calculated MW	64779
Antigen Region	542-569

**ST7L Antibody (C-term) - Additional Information****Gene ID** 54879**Other Names**

Suppressor of tumorigenicity 7 protein-like, ST7-related protein, ST7L, ST7R

**Target/Specificity**

This ST7L antibody is generated from rabbits immunized with a KLH conjugated synthetic peptide between 542-569 amino acids from the C-terminal region of human ST7L.

**Dilution**

WB~~1:1000

**Format**

Purified polyclonal antibody supplied in PBS with 0.09% (W/V) sodium azide. This antibody is purified through a protein A column, followed by peptide affinity purification.

**Storage**

Maintain refrigerated at 2-8°C for up to 2 weeks. For long term storage store at -20°C in small aliquots to prevent freeze-thaw cycles.

**Precautions**

ST7L Antibody (C-term) is for research use only and not for use in diagnostic or therapeutic procedures.

**ST7L Antibody (C-term) - Protein Information****Name** ST7L**Synonyms** ST7R**Cellular Location**

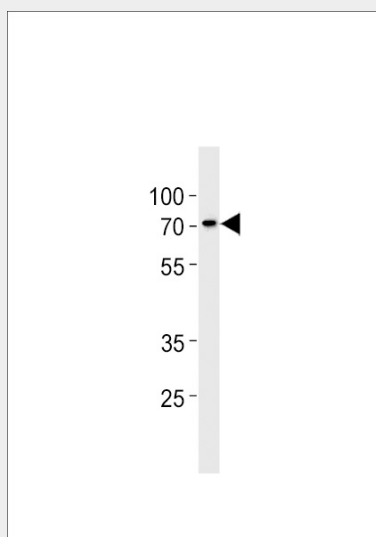
Membrane; Multi-pass membrane protein

### ST7L Antibody (C-term) - Protocols

Provided below are standard protocols that you may find useful for product applications.

- [Western Blot](#)
- [Blocking Peptides](#)
- [Dot Blot](#)
- [Immunohistochemistry](#)
- [Immunofluorescence](#)
- [Immunoprecipitation](#)
- [Flow Cytometry](#)
- [Cell Culture](#)

### ST7L Antibody (C-term) - Images



ST7L Antibody (C-term) (Cat. #AP20500b) western blot analysis in A375 cell line lysates (35ug/lane). This demonstrates the ST7L antibody detected the ST7L protein (arrow).

### ST7L Antibody (C-term) - References

- Katoh M., et al. *Int. J. Oncol.* 20:1247-1253(2002).  
Ota T., et al. *Nat. Genet.* 36:40-45(2004).  
Bechtel S., et al. *BMC Genomics* 8:399-399(2007).  
Gregory S.G., et al. *Nature* 441:315-321(2006).  
Mural R.J., et al. Submitted (JUL-2005) to the EMBL/GenBank/DDBJ databases.