

**SGCG Antibody (Center)**  
**Affinity Purified Rabbit Polyclonal Antibody (Pab)**  
**Catalog # AP20498c****Specification**

---

**SGCG Antibody (Center) - Product Information**

Application	<b>WB, IHC-P,E</b>
Primary Accession	<a href="#">O13326</a>
Other Accession	<a href="#">Q0VCU7</a>
Reactivity	<b>Human</b>
Predicted	<b>Bovine</b>
Host	<b>Rabbit</b>
Clonality	<b>Polyclonal</b>
Isotype	<b>Rabbit IgG</b>
Calculated MW	<b>32379</b>
Antigen Region	<b>145-172</b>

**SGCG Antibody (Center) - Additional Information****Gene ID** 6445**Other Names**

Gamma-sarcoglycan, Gamma-SG, 35 kDa dystrophin-associated glycoprotein, 35DAG, SGCG

**Target/Specificity**

This SGCG antibody is generated from rabbits immunized with a KLH conjugated synthetic peptide between 145-172 amino acids from the Central region of human SGCG.

**Dilution**

WB~~1:1000

IHC-P~~1:25

**Format**

Purified polyclonal antibody supplied in PBS with 0.09% (W/V) sodium azide. This antibody is purified through a protein A column, followed by peptide affinity purification.

**Storage**

Maintain refrigerated at 2-8°C for up to 2 weeks. For long term storage store at -20°C in small aliquots to prevent freeze-thaw cycles.

**Precautions**

SGCG Antibody (Center) is for research use only and not for use in diagnostic or therapeutic procedures.

**SGCG Antibody (Center) - Protein Information****Name** SGCG

**Function** Component of the sarcoglycan complex, a subcomplex of the dystrophin-glycoprotein complex which forms a link between the F-actin cytoskeleton and the extracellular matrix.

**Cellular Location**

Cell membrane, sarcolemma; Single-pass type II membrane protein. Cytoplasm, cytoskeleton

**Tissue Location**

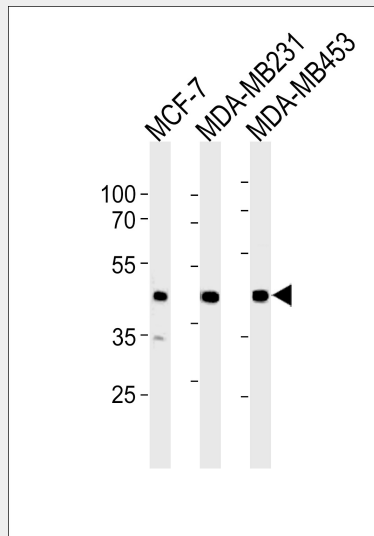
Expressed in skeletal and heart muscle.

**SGCG Antibody (Center) - Protocols**

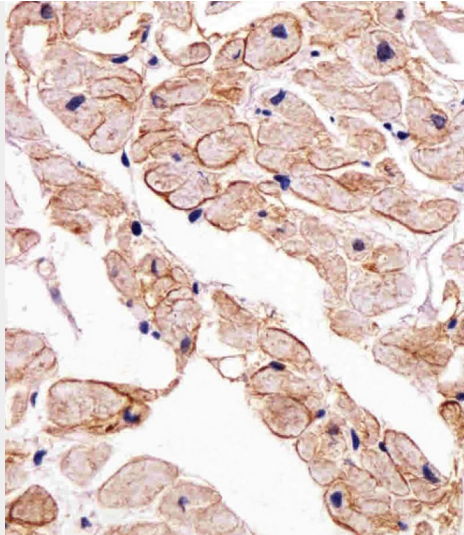
Provided below are standard protocols that you may find useful for product applications.

- [Western Blot](#)
- [Blocking Peptides](#)
- [Dot Blot](#)
- [Immunohistochemistry](#)
- [Immunofluorescence](#)
- [Immunoprecipitation](#)
- [Flow Cytometry](#)
- [Cell Culture](#)

**SGCG Antibody (Center) - Images**



SGCG Antibody (Center) (Cat. #AP20498c) western blot analysis in MCF-7,MDA-MB231,MDA-MB453 cell line lysates (35ug/lane).This demonstrates the SGCG antibody detected the SGCG protein (arrow).



Immunohistochemical analysis of paraffin-embedded H. heart section using SGCG Antibody (Center)(Cat#AP20498C). AP20498C was diluted at 1:25 dilution. A undiluted biotinylated goat polyvalent antibody was used as the secondary, followed by DAB staining.

#### **SGCG Antibody (Center) - Background**

Component of the sarcoglycan complex, a subcomplex of the dystrophin-glycoprotein complex which forms a link between the F-actin cytoskeleton and the extracellular matrix.

#### **SGCG Antibody (Center) - References**

- Noguchi S., et al. Science 270:819-822(1995).  
McNally E.M., et al. Am. J. Hum. Genet. 59:1040-1047(1996).  
Dunham A., et al. Nature 428:522-528(2004).  
Thompson T.G., et al. J. Cell Biol. 148:115-126(2000).  
Piccolo F., et al. Hum. Mol. Genet. 5:2019-2022(1996).