

**CALB1 Antibody (Center)**  
**Affinity Purified Rabbit Polyclonal Antibody (Pab)**  
**Catalog # AP20497c**

**Specification**

---

**CALB1 Antibody (Center) - Product Information**

Application	<b>WB, IHC-P,E</b>
Primary Accession	<a href="#">P05937</a>
Other Accession	<a href="#">P07171</a> , <a href="#">P12658</a> , <a href="#">P04467</a>
Reactivity	<b>Human, Rat</b>
Predicted	<b>Bovine, Mouse</b>
Host	<b>Rabbit</b>
Clonality	<b>Polyclonal</b>
Isotype	<b>Rabbit IgG</b>
Calculated MW	<b>30025</b>
Antigen Region	<b>90-116</b>

**CALB1 Antibody (Center) - Additional Information**

**Gene ID** 793

**Other Names**

Calbindin, Calbindin D28, D-28K, Vitamin D-dependent calcium-binding protein, avian-type, CALB1, CAB27

**Target/Specificity**

This CALB1 antibody is generated from rabbits immunized with a KLH conjugated synthetic peptide between 90-116 amino acids from the Central region of human CALB1.

**Dilution**

WB~~1:1000  
IHC-P~~1:25

**Format**

Purified polyclonal antibody supplied in PBS with 0.09% (W/V) sodium azide. This antibody is purified through a protein A column, followed by peptide affinity purification.

**Storage**

Maintain refrigerated at 2-8°C for up to 2 weeks. For long term storage store at -20°C in small aliquots to prevent freeze-thaw cycles.

**Precautions**

CALB1 Antibody (Center) is for research use only and not for use in diagnostic or therapeutic procedures.

**CALB1 Antibody (Center) - Protein Information**

**Name** CALB1

### Synonyms CAB27

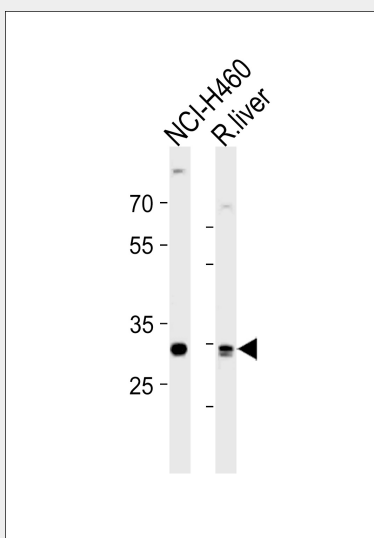
**Function** Buffers cytosolic calcium. May stimulate a membrane Ca(2+)- ATPase and a 3',5'-cyclic nucleotide phosphodiesterase.

### CALB1 Antibody (Center) - Protocols

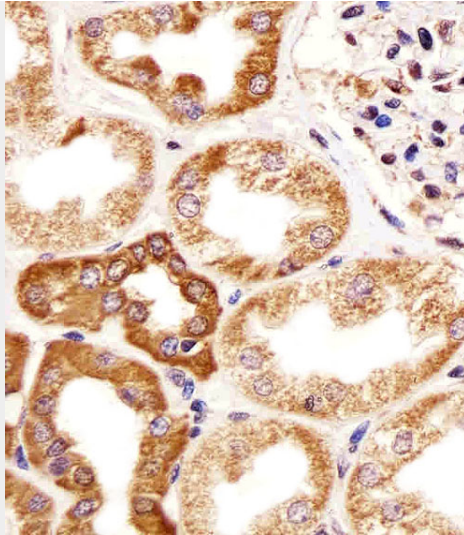
Provided below are standard protocols that you may find useful for product applications.

- [Western Blot](#)
- [Blocking Peptides](#)
- [Dot Blot](#)
- [Immunohistochemistry](#)
- [Immunofluorescence](#)
- [Immunoprecipitation](#)
- [Flow Cytometry](#)
- [Cell Culture](#)

### CALB1 Antibody (Center) - Images



CALB1 Antibody (Center) (Cat. #AP20497c) western blot analysis in NCI-H460 cell line and rat liver tissue lysates (35ug/lane). This demonstrates the CALB1 antibody detected the CALB1 protein (arrow).



Immunohistochemical analysis of paraffin-embedded H. kidney section using CALB1 Antibody (Center)(Cat#AP20497C). AP20497C was diluted at 1:25 dilution. A undiluted biotinylated goat polyvalent antibody was used as the secondary, followed by DAB staining.

#### **CALB1 Antibody (Center) - Background**

Buffers cytosolic calcium. May stimulate a membrane Ca(2+)-ATPase and a 3',5'-cyclic nucleotide phosphodiesterase.

#### **CALB1 Antibody (Center) - References**

- Parmentier M., et al. Eur. J. Biochem. 170:207-215(1987).
- Ota T., et al. Nat. Genet. 36:40-45(2004).
- Nusbaum C., et al. Nature 439:331-335(2006).
- Mural R.J., et al. Submitted (JUL-2005) to the EMBL/GenBank/DDBJ databases.
- Parmentier M., et al. Genomics 4:309-319(1989).