

**RNF166 Antibody (Center)**  
**Affinity Purified Rabbit Polyclonal Antibody (Pab)**  
**Catalog # AP20484c**

**Specification**

---

**RNF166 Antibody (Center) - Product Information**

Application	IF, WB,E
Primary Accession	<a href="#">Q96A37</a>
Other Accession	<a href="#">Q6J1I7</a> , <a href="#">Q3U9F6</a>
Reactivity	Human, Mouse
Predicted	Rat
Host	Rabbit
Clonality	Polyclonal
Isotype	Rabbit IgG
Calculated MW	26122
Antigen Region	71-97

**RNF166 Antibody (Center) - Additional Information**

**Gene ID** 115992

**Other Names**

RING finger protein 166, RNF166

**Target/Specificity**

This RNF166 antibody is generated from rabbits immunized with a KLH conjugated synthetic peptide between 71-97 amino acids from the Central region of human RNF166.

**Dilution**

IF~~1:25

WB~~1:1000

**Format**

Purified polyclonal antibody supplied in PBS with 0.09% (W/V) sodium azide. This antibody is purified through a protein A column, followed by peptide affinity purification.

**Storage**

Maintain refrigerated at 2-8°C for up to 2 weeks. For long term storage store at -20°C in small aliquots to prevent freeze-thaw cycles.

**Precautions**

RNF166 Antibody (Center) is for research use only and not for use in diagnostic or therapeutic procedures.

**RNF166 Antibody (Center) - Protein Information**

**Name** RNF166

**Function** E3 ubiquitin-protein ligase that promotes the ubiquitination of different substrates (PubMed:[27880896](#)). In turn, participates in different biological processes including interferon production or autophagy (PubMed:[26456228](#), PubMed:[27880896](#)). Plays a role in the activation of RNA virus-induced interferon-beta production by promoting the ubiquitination of TRAF3 and TRAF6 (PubMed:[26456228](#)). Also plays a role in the early recruitment of autophagy adapters to bacteria (PubMed:[27880896](#)). Mediates 'Lys-29' and 'Lys-33'-linked ubiquitination of SQSTM1 leading to xenophagic targeting of bacteria and inhibition of their replication (PubMed:[27880896](#)).

#### Cellular Location

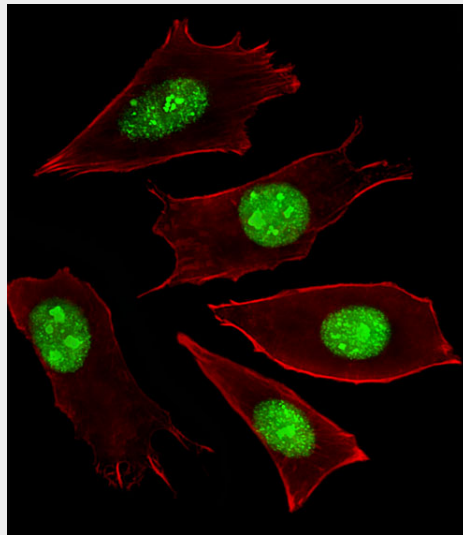
Cytoplasm.

#### RNF166 Antibody (Center) - Protocols

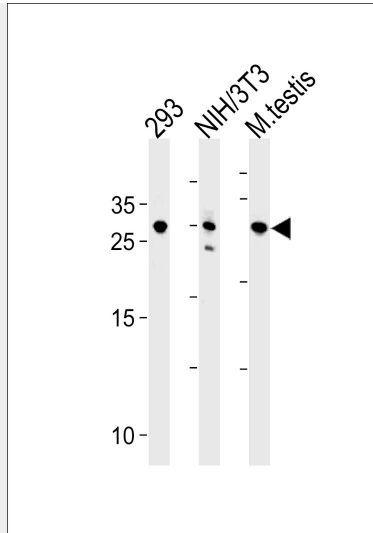
Provided below are standard protocols that you may find useful for product applications.

- [Western Blot](#)
- [Blocking Peptides](#)
- [Dot Blot](#)
- [Immunohistochemistry](#)
- [Immunofluorescence](#)
- [Immunoprecipitation](#)
- [Flow Cytometry](#)
- [Cell Culture](#)

#### RNF166 Antibody (Center) - Images



Fluorescent image of NIH/3T3 cells stained with RNF166 Antibody (Center)(Cat#AP20484C). AP20484C was diluted at 1:25 dilution. An Alexa Fluor 488-conjugated goat anti-rabbit IgG at 1:400 dilution was used as the secondary antibody (green). Cytoplasmic actin was counterstained with Alexa Fluor® 555 conjugated with Phalloidin (red).



RNF166 Antibody (Center) (Cat. #AP20484c) western blot analysis in 293, mouse NIH/3T3 cell line and testis tissue lysates (35ug/lane). This demonstrates the RNF166 antibody detected the RNF166 protein (arrow).

#### **RNF166 Antibody (Center) - References**

Ota T., et al. Nat. Genet. 36:40-45(2004).

Mural R.J., et al. Submitted (SEP-2005) to the EMBL/GenBank/DDBJ databases.

#### **RNF166 Antibody (Center) - Citations**

- [RNF166 promotes colorectal cancer progression by recognizing and destabilizing poly-ADP-ribosylated angiomotins](#)
- [RNF166 Determines Recruitment of Adaptor Proteins during Antibacterial Autophagy](#)