

SSNA1 Antibody (N-term)
Affinity Purified Rabbit Polyclonal Antibody (Pab)
Catalog # AP20483a

Specification

SSNA1 Antibody (N-term) - Product Information

Application	WB, IHC-P,E
Primary Accession	O43805
Other Accession	O9JJ94 , Q5E9C3
Reactivity	Human
Predicted	Bovine, Mouse
Host	Rabbit
Clonality	Polyclonal
Isotype	Rabbit IgG
Calculated MW	13596
Antigen Region	25-53

SSNA1 Antibody (N-term) - Additional Information

Gene ID 8636

Other Names

Sjogren syndrome nuclear autoantigen 1, Nuclear autoantigen of 14 kDa, SSNA1, NA14

Target/Specificity

This SSNA1 antibody is generated from rabbits immunized with a KLH conjugated synthetic peptide between 25-53 amino acids from the N-terminal region of human SSNA1.

Dilution

WB~~1:1000
IHC-P~~1:25

Format

Purified polyclonal antibody supplied in PBS with 0.09% (W/V) sodium azide. This antibody is purified through a protein A column, followed by peptide affinity purification.

Storage

Maintain refrigerated at 2-8°C for up to 2 weeks. For long term storage store at -20°C in small aliquots to prevent freeze-thaw cycles.

Precautions

SSNA1 Antibody (N-term) is for research use only and not for use in diagnostic or therapeutic procedures.

SSNA1 Antibody (N-term) - Protein Information

Name SSNA1 ([HGNC:11321](#))

Function Microtubule-binding protein which stabilizes dynamic microtubules by slowing growth and shrinkage at both plus and minus ends and serves as a sensor of microtubule damage, protecting microtubules from the microtubule-severing enzyme SPAST (PubMed:[34970964](#)). Induces microtubule branching which is mediated by the formation of long SSNA1 fibrils which guide microtubule protofilaments to split apart from the mother microtubule and form daughter microtubules (By similarity). Plays a role in axon outgrowth and branching (PubMed:[25390646](#)). Required for cell division (PubMed:[25390646](#)).

Cellular Location

Nucleus. Cytoplasm, cytoskeleton, microtubule organizing center, centrosome. Cytoplasm, cytoskeleton, microtubule organizing center, centrosome, centriole Midbody. Cytoplasm, cytoskeleton, flagellum basal body. Cytoplasm, cytoskeleton, flagellum axoneme. Cell projection, axon {ECO:0000250|UniProtKB:Q9JJ94}. Note=In sperm, strongly expressed in the basal body region with weaker expression in the axoneme (PubMed:12640030). Localizes to axon branching points in neurons (By similarity). {ECO:0000250|UniProtKB:Q9JJ94, ECO:0000269|PubMed:12640030}

Tissue Location

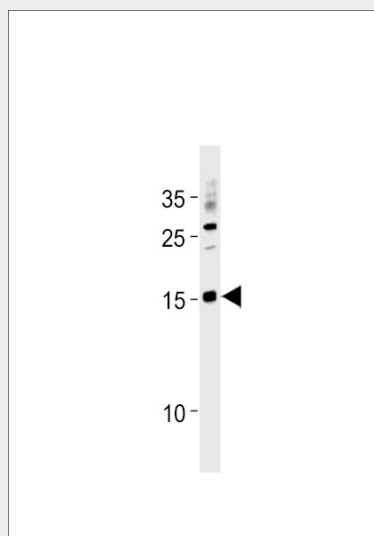
Widely expressed..

SSNA1 Antibody (N-term) - Protocols

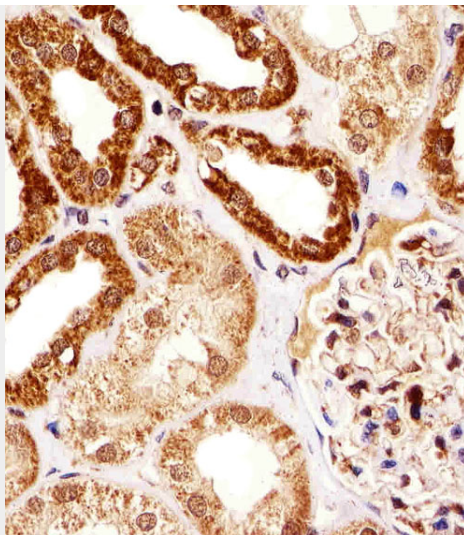
Provided below are standard protocols that you may find useful for product applications.

- [Western Blot](#)
- [Blocking Peptides](#)
- [Dot Blot](#)
- [Immunohistochemistry](#)
- [Immunofluorescence](#)
- [Immunoprecipitation](#)
- [Flow Cytometry](#)
- [Cell Culture](#)

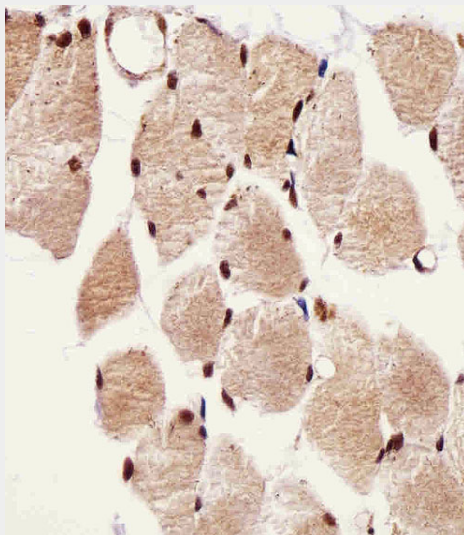
SSNA1 Antibody (N-term) - Images



SSNA1 Antibody (N-term) (Cat. #AP20483a) western blot analysis in A2058 cell line lysates (35ug/lane). This demonstrates the SSNA1 antibody detected the SSNA1 protein (arrow).



Immunohistochemical analysis of paraffin-embedded H. kidney section using SSNA1 Antibody (N-term)(Cat#AP20483A). AP20483A was diluted at 1:25 dilution. A undiluted biotinylated goat polyvalent antibody was used as the secondary, followed by DAB staining.



Immunohistochemical analysis of paraffin-embedded H. skeletal muscle section using SSNA1 Antibody (N-term)(Cat#AP20483A). AP20483A was diluted at 1:25 dilution. A undiluted biotinylated goat polyvalent antibody was used as the secondary, followed by DAB staining.

SSNA1 Antibody (N-term) - References

- Ramos-Morales F., et al. J. Biol. Chem. 273:1634-1639(1998).
Kalnine N., et al. Submitted (MAY-2003) to the EMBL/GenBank/DDBJ databases.
Halleck A., et al. Submitted (JUN-2004) to the EMBL/GenBank/DDBJ databases.
Humphray S.J., et al. Nature 429:369-374(2004).
Mural R.J., et al. Submitted (JUL-2005) to the EMBL/GenBank/DDBJ databases.