

ASB9 Antibody (N-term)
Affinity Purified Rabbit Polyclonal Antibody (Pab)
Catalog # AP20482a

Specification

ASB9 Antibody (N-term) - Product Information

Application	WB,E
Primary Accession	Q96DX5
Reactivity	Human
Host	Rabbit
Clonality	Polyclonal
Isotype	Rabbit IgG
Calculated MW	31858
Antigen Region	1-30

ASB9 Antibody (N-term) - Additional Information

Gene ID 140462

Other Names

Ankyrin repeat and SOCS box protein 9, ASB-9, ASB9

Target/Specificity

This ASB9 antibody is generated from rabbits immunized with a KLH conjugated synthetic peptide between 1-30 amino acids from the N-terminal region of human ASB9.

Dilution

WB~~1:1000

Format

Purified polyclonal antibody supplied in PBS with 0.09% (W/V) sodium azide. This antibody is purified through a protein A column, followed by peptide affinity purification.

Storage

Maintain refrigerated at 2-8°C for up to 2 weeks. For long term storage store at -20°C in small aliquots to prevent freeze-thaw cycles.

Precautions

ASB9 Antibody (N-term) is for research use only and not for use in diagnostic or therapeutic procedures.

ASB9 Antibody (N-term) - Protein Information

Name ASB9

Function Substrate-recognition component of a SCF-like ECS (Elongin- Cullin-SOCS-box protein) E3 ubiquitin-protein ligase complex which mediates the ubiquitination and subsequent proteasomal degradation of target proteins. Recognizes at least two forms of creatine kinase, CKB

and CKMT1A.

Cellular Location

Mitochondrion.

Tissue Location

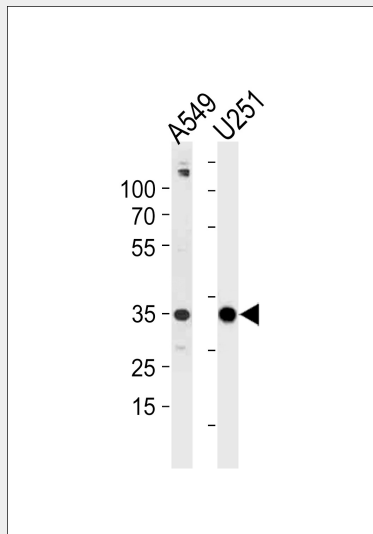
Predominantly expressed in testis, kidney, and liver.

ASB9 Antibody (N-term) - Protocols

Provided below are standard protocols that you may find useful for product applications.

- [Western Blot](#)
- [Blocking Peptides](#)
- [Dot Blot](#)
- [Immunohistochemistry](#)
- [Immunofluorescence](#)
- [Immunoprecipitation](#)
- [Flow Cytometry](#)
- [Cell Culture](#)

ASB9 Antibody (N-term) - Images



ASB9 Antibody (N-term) (Cat. #AP20482a) western blot analysis in A549,U251 cell line lysates (35ug/lane).This demonstrates the ASB9 antibody detected the ASB9 protein (arrow).

ASB9 Antibody (N-term) - Background

Substrate-recognition component of a SCF-like ECS (Elongin-Cullin-SOCS-box protein) E3 ubiquitin-protein ligase complex which mediates the ubiquitination and subsequent proteasomal degradation of target proteins. Recognizes at least two forms of creatine kinase, CKB and CKMT1A.

ASB9 Antibody (N-term) - References

- Fei X., et al. Protein J. 31:275-284(2012).
Mural R.J., et al. Submitted (JUL-2005) to the EMBL/GenBank/DDBJ databases.
Kwon S., et al. BMC Biol. 8:23-23(2010).

Ota T., et al. Nat. Genet. 36:40-45(2004).
Bechtel S., et al. BMC Genomics 8:399-399(2007).