

**MATN2 Antibody (C-term)**  
**Affinity Purified Rabbit Polyclonal Antibody (Pab)**  
**Catalog # AP20481b****Specification**

---

**MATN2 Antibody (C-term) - Product Information**

Application	<b>WB, IHC-P,E</b>
Primary Accession	<a href="#">O00339</a>
Reactivity	<b>Human</b>
Host	<b>Rabbit</b>
Clonality	<b>Polyclonal</b>
Isotype	<b>Rabbit IgG</b>
Antigen Region	<b>732-760</b>

**MATN2 Antibody (C-term) - Additional Information****Gene ID** 4147**Other Names**

Matrilin-2, MATN2

**Target/Specificity**

This MATN2 antibody is generated from rabbits immunized with a KLH conjugated synthetic peptide between 732-760 amino acids of human MATN2.

**Dilution**

WB~~1:1000

IHC-P~~1:25

**Format**

Purified polyclonal antibody supplied in PBS with 0.09% (W/V) sodium azide. This antibody is purified through a protein A column, followed by peptide affinity purification.

**Storage**

Maintain refrigerated at 2-8°C for up to 2 weeks. For long term storage store at -20°C in small aliquots to prevent freeze-thaw cycles.

**Precautions**

MATN2 Antibody (C-term) is for research use only and not for use in diagnostic or therapeutic procedures.

**MATN2 Antibody (C-term) - Protein Information****Name** MATN2**Function** Involved in matrix assembly.**Cellular Location**

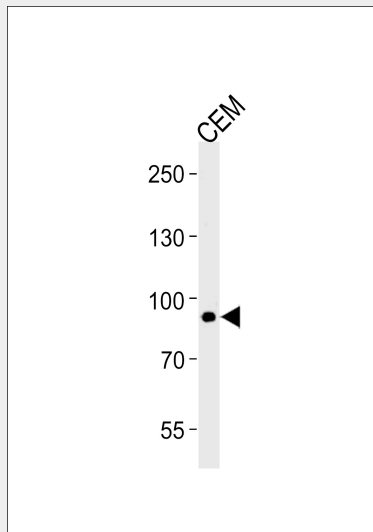
Secreted.

### **MATN2 Antibody (C-term) - Protocols**

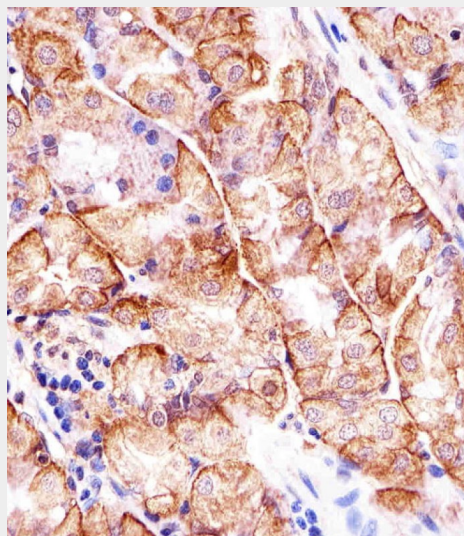
Provided below are standard protocols that you may find useful for product applications.

- [Western Blot](#)
- [Blocking Peptides](#)
- [Dot Blot](#)
- [Immunohistochemistry](#)
- [Immunofluorescence](#)
- [Immunoprecipitation](#)
- [Flow Cytometry](#)
- [Cell Culture](#)

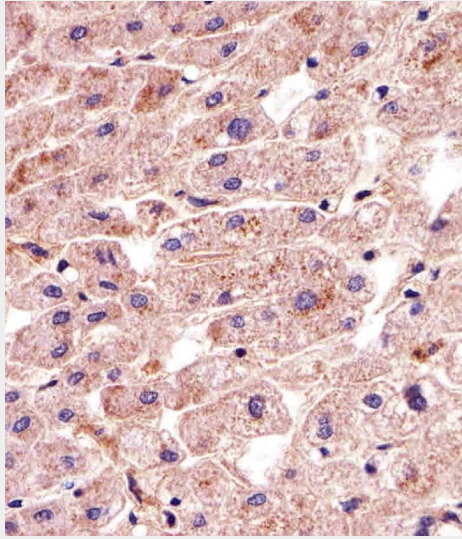
### **MATN2 Antibody (C-term) - Images**



MATN2 Antibody (C-term) (Cat. #AP20481b) western blot analysis in CEM cell line lysates (35ug/lane). This demonstrates the MATN2 antibody detected the MATN2 protein (arrow).



Immunohistochemical analysis of paraffin-embedded H. stomach section using MATN2 Antibody (C-term)(Cat#AP20481B). AP20481B was diluted at 1:25 dilution. A undiluted biotinylated goat polyvalent antibody was used as the secondary, followed by DAB staining.



Immunohistochemical analysis of paraffin-embedded H. liver section using MATN2 Antibody (C-term)(Cat#AP20481B). AP20481B was diluted at 1:25 dilution. A undiluted biotinylated goat polyvalent antibody was used as the secondary, followed by DAB staining.

#### **MATN2 Antibody (C-term) - Background**

Involved in matrix assembly (By similarity).

#### **MATN2 Antibody (C-term) - References**

- Deak F., et al. J. Biol. Chem. 272:9268-9274(1997).
- Muratoglu S., et al. Cytogenet. Cell Genet. 90:323-327(2000).
- Clark H.F., et al. Genome Res. 13:2265-2270(2003).
- Ota T., et al. Nat. Genet. 36:40-45(2004).
- Bechtel S., et al. BMC Genomics 8:399-399(2007).