

GPR150 Antibody (C-term)
Affinity Purified Rabbit Polyclonal Antibody (Pab)
Catalog # AP20480b**Specification**

GPR150 Antibody (C-term) - Product Information

Application	WB,E
Primary Accession	Q8NGU9
Reactivity	Human
Host	Rabbit
Clonality	Polyclonal
Isotype	Rabbit IgG
Calculated MW	46353
Antigen Region	366-395

GPR150 Antibody (C-term) - Additional Information**Gene ID** 285601**Other Names**

Probable G-protein coupled receptor 150, GPR150

Target/Specificity

This GPR150 antibody is generated from rabbits immunized with a KLH conjugated synthetic peptide between 366-395 amino acids from the C-terminal region of human GPR150.

Dilution

WB~~1:1000

Format

Purified polyclonal antibody supplied in PBS with 0.09% (W/V) sodium azide. This antibody is purified through a protein A column, followed by peptide affinity purification.

Storage

Maintain refrigerated at 2-8°C for up to 2 weeks. For long term storage store at -20°C in small aliquots to prevent freeze-thaw cycles.

Precautions

GPR150 Antibody (C-term) is for research use only and not for use in diagnostic or therapeutic procedures.

GPR150 Antibody (C-term) - Protein Information**Name** GPR150**Function** Orphan receptor.**Cellular Location**

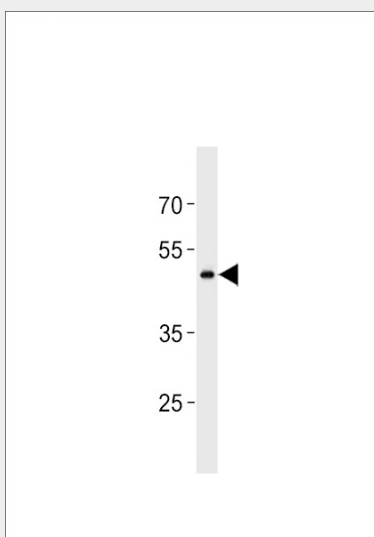
Cell membrane; Multi-pass membrane protein.

GPR150 Antibody (C-term) - Protocols

Provided below are standard protocols that you may find useful for product applications.

- [Western Blot](#)
- [Blocking Peptides](#)
- [Dot Blot](#)
- [Immunohistochemistry](#)
- [Immunofluorescence](#)
- [Immunoprecipitation](#)
- [Flow Cytometry](#)
- [Cell Culture](#)

GPR150 Antibody (C-term) - Images



GPR150 Antibody (C-term) (Cat. #AP20480b) western blot analysis in K562 cell line lysates (35ug/lane). This demonstrates the GPR150 antibody detected the GPR150 protein (arrow).

GPR150 Antibody (C-term) - Background

Orphan receptor.

GPR150 Antibody (C-term) - References

Suwa M., et al. Submitted (JUL-2001) to the EMBL/GenBank/DDBJ databases.