

RPS21 Antibody (C-term)
Affinity Purified Rabbit Polyclonal Antibody (Pab)
Catalog # AP20470b

Specification

RPS21 Antibody (C-term) - Product Information

Application	WB,E
Primary Accession	P63220
Other Accession	P05765 , P63221 , O9CQR2 , Q32PB8 , G1TM82
Reactivity	Human
Predicted	Bovine, Mouse, Pig, Rabbit, Rat
Host	Rabbit
Clonality	Polyclonal
Isotype	Rabbit IgG
Calculated MW	9111
Antigen Region	44-71

RPS21 Antibody (C-term) - Additional Information

Gene ID 6227

Other Names

40S ribosomal protein S21, RPS21

Target/Specificity

This RPS21 antibody is generated from rabbits immunized with a KLH conjugated synthetic peptide between 44-71 amino acids from the C-terminal region of human RPS21.

Dilution

WB~~1:1000

Format

Purified polyclonal antibody supplied in PBS with 0.09% (W/V) sodium azide. This antibody is purified through a protein A column, followed by peptide affinity purification.

Storage

Maintain refrigerated at 2-8°C for up to 2 weeks. For long term storage store at -20°C in small aliquots to prevent freeze-thaw cycles.

Precautions

RPS21 Antibody (C-term) is for research use only and not for use in diagnostic or therapeutic procedures.

RPS21 Antibody (C-term) - Protein Information

Name RPS21

Function Component of the small ribosomal subunit (PubMed:[23636399](#), PubMed:[25901680](#),

PubMed:[25957688](#)). The ribosome is a large ribonucleoprotein complex responsible for the synthesis of proteins in the cell (PubMed:[23636399](#), PubMed:[25901680](#), PubMed:[25957688](#)).

Cellular Location

Cytoplasm, cytosol. Cytoplasm Rough endoplasmic reticulum {ECO:0000250|UniProtKB:P63221}

Note=Detected on cytosolic polysomes (PubMed:25957688). Detected in ribosomes that are associated with the rough endoplasmic reticulum (By similarity).

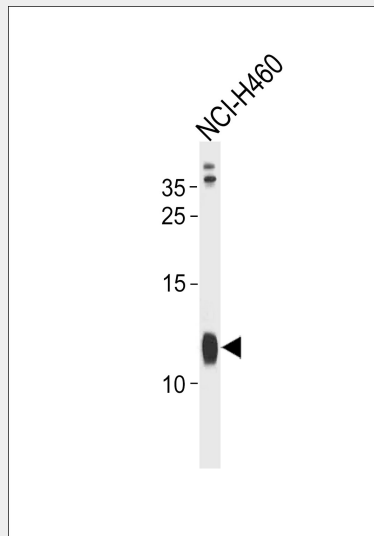
{ECO:0000250|UniProtKB:P63221, ECO:0000269|PubMed:25957688}

RPS21 Antibody (C-term) - Protocols

Provided below are standard protocols that you may find useful for product applications.

- [Western Blot](#)
- [Blocking Peptides](#)
- [Dot Blot](#)
- [Immunohistochemistry](#)
- [Immunofluorescence](#)
- [Immunoprecipitation](#)
- [Flow Cytometry](#)
- [Cell Culture](#)

RPS21 Antibody (C-term) - Images



RPS21 Antibody (C-term) (Cat. #AP20470b) western blot analysis in NCI-H460 cell line lysates (35ug/lane). This demonstrates the RPS21 antibody detected the RPS21 protein (arrow).

RPS21 Antibody (C-term) - References

- Bhat K.S., et al. Nucleic Acids Res. 21:2939-2939(1993).
Smirnova E.V., et al. Bioorg. Khim. 26:392-396(2000).
Yoshihama M., et al. Genome Res. 12:379-390(2002).
Deloukas P., et al. Nature 414:865-871(2001).
Kenmochi N., et al. Genome Res. 8:509-523(1998).