

ECE2 Antibody (Center)
Affinity Purified Rabbit Polyclonal Antibody (Pab)
Catalog # AP20460c**Specification**

ECE2 Antibody (Center) - Product Information

Application	WB, IHC-P,E
Primary Accession	O60344
Other Accession	O80Z60 , O10711 , F1N476 , PODPD6 , B2RQR8 , PODPE2 , PODPD8 , PODPD9
Reactivity	Human
Predicted	Bovine, Mouse
Host	Rabbit
Clonality	Polyclonal
Isotype	Rabbit IgG
Antigen Region	551-579

ECE2 Antibody (Center) - Additional Information**Other Names**

Endothelin-converting enzyme 2, ECE-2, Methyltransferase-like region, 211-, Endothelin-converting enzyme 2 region, ECE2, KIAA0604

Target/Specificity

This ECE2 antibody is generated from rabbits immunized with a KLH conjugated synthetic peptide between 551-579 amino acids from the Central region of human ECE2.

Dilution

WB~~1:1000

IHC-P~~1:25

Format

Purified polyclonal antibody supplied in PBS with 0.09% (W/V) sodium azide. This antibody is purified through a protein A column, followed by peptide affinity purification.

Storage

Maintain refrigerated at 2-8°C for up to 2 weeks. For long term storage store at -20°C in small aliquots to prevent freeze-thaw cycles.

Precautions

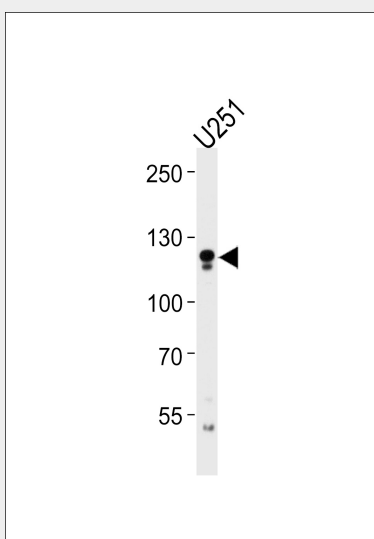
ECE2 Antibody (Center) is for research use only and not for use in diagnostic or therapeutic procedures.

ECE2 Antibody (Center) - Protein Information**ECE2 Antibody (Center) - Protocols**

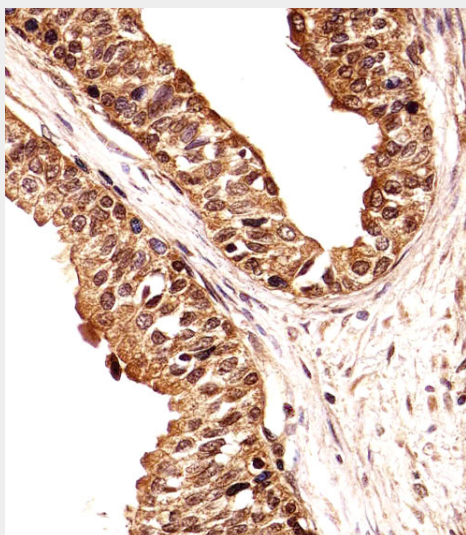
Provided below are standard protocols that you may find useful for product applications.

- [Western Blot](#)
- [Blocking Peptides](#)
- [Dot Blot](#)
- [Immunohistochemistry](#)
- [Immunofluorescence](#)
- [Immunoprecipitation](#)
- [Flow Cytometry](#)
- [Cell Culture](#)

ECE2 Antibody (Center) - Images



ECE2 Antibody (Center) (Cat. #AP20460c) western blot analysis in U251 cell line lysates (35ug/lane). This demonstrates the ECE2 antibody detected the ECE2 protein (arrow).



Immunohistochemical analysis of paraffin-embedded H. prostate section using ECE2 Antibody (Center)(Cat#AP20460C). AP20460C was diluted at 1:25 dilution. A undiluted biotinylated goat polyvalent antibody was used as the secondary, followed by DAB staining.

ECE2 Antibody (Center) - Background

Converts big endothelin-1 to endothelin-1. Also involved in the processing of various neuroendocrine peptides, including neurotensin, angiotensin I, substance P, proenkephalin-derived peptides, and prodynorphin-derived peptides. May limit beta-amyloid peptide accumulation in brain. May also have methyltransferase activity.

ECE2 Antibody (Center) - References

- Lorenzo M.-N., et al. *Biochim. Biophys. Acta* 1522:46-52(2001).
Funke-Kaiser H., et al. Submitted (JUN-2002) to the EMBL/GenBank/DDBJ databases.
Nagase T., et al. *DNA Res.* 5:31-39(1998).
Clark H.F., et al. *Genome Res.* 13:2265-2270(2003).
Muzny D.M., et al. *Nature* 440:1194-1198(2006).