

TSPYL2 Antibody (Center)
Affinity Purified Rabbit Polyclonal Antibody (Pab)
Catalog # AP20456c

Specification

TSPYL2 Antibody (Center) - Product Information

Application	WB,E
Primary Accession	O9H2G4
Other Accession	O9BE64
Reactivity	Human
Predicted	Monkey
Host	Rabbit
Clonality	Polyclonal
Isotype	Rabbit IgG
Calculated MW	79435
Antigen Region	380-409

TSPYL2 Antibody (Center) - Additional Information

Gene ID 64061

Other Names

Testis-specific Y-encoded-like protein 2, TSPY-like protein 2, Cell division autoantigen 1, Cutaneous T-cell lymphoma-associated antigen se20-4, CTCL-associated antigen se20-4, Differentially-expressed nucleolar TGF-beta1 target protein, Nuclear protein of 79 kDa, NP79, TSPYL2, CDA1, DENTT, TSPX

Target/Specificity

This TSPYL2 antibody is generated from rabbits immunized with a KLH conjugated synthetic peptide between 380-409 amino acids from the Central region of human TSPYL2.

Dilution

WB~~1:1000

Format

Purified polyclonal antibody supplied in PBS with 0.09% (W/V) sodium azide. This antibody is purified through a protein A column, followed by peptide affinity purification.

Storage

Maintain refrigerated at 2-8°C for up to 2 weeks. For long term storage store at -20°C in small aliquots to prevent freeze-thaw cycles.

Precautions

TSPYL2 Antibody (Center) is for research use only and not for use in diagnostic or therapeutic procedures.

TSPYL2 Antibody (Center) - Protein Information

Name TSPYL2

Synonyms CDA1, DENTT, TSPX

Function Part of the CASK/TBR1/TSPYL2 transcriptional complex which modulates gene expression in response to neuronal synaptic activity, probably by facilitating nucleosome assembly. May inhibit cell proliferation by inducing p53-dependent CDKN1A expression.

Cellular Location

Nucleus. Cytoplasm. Note=Enriched in transcriptionally active regions of chromatin in neurons

Tissue Location

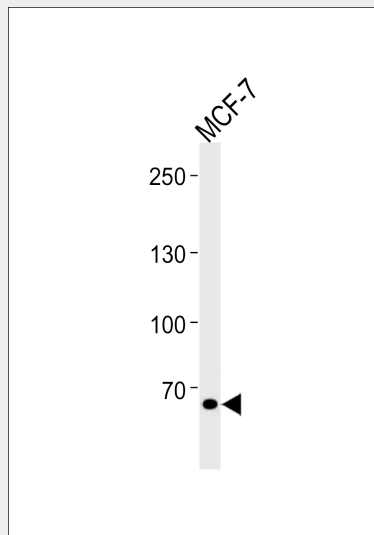
Ubiquitously expressed, with highest levels in brain, testis and heart, and lowest levels in liver and pancreas

TSPYL2 Antibody (Center) - Protocols

Provided below are standard protocols that you may find useful for product applications.

- [Western Blot](#)
- [Blocking Peptides](#)
- [Dot Blot](#)
- [Immunohistochemistry](#)
- [Immunofluorescence](#)
- [Immunoprecipitation](#)
- [Flow Cytometry](#)
- [Cell Culture](#)

TSPYL2 Antibody (Center) - Images



TSPYL2 Antibody (Center) (Cat. #AP20456c) western blot analysis in MCF-7 cell line lysates (35ug/lane). This demonstrates the TSPYL2 antibody detected the TSPYL2 protein (arrow).

TSPYL2 Antibody (Center) - Background

Part of the CASK/TRB1/TSPYL2 transcriptional complex which modulates gene expression in response to neuronal synaptic activity, probably by facilitating nucleosome assembly. May inhibit

cell proliferation by inducing p53-dependent CDKN1A expression.

TSPYL2 Antibody (Center) - References

- Dephoure N., et al. Proc. Natl. Acad. Sci. U.S.A. 105:10762-10767(2008).
Chai Z., et al. J. Biol. Chem. 276:33665-33674(2001).
Eichmueller S., et al. Proc. Natl. Acad. Sci. U.S.A. 98:629-634(2001).
Bechtel S., et al. BMC Genomics 8:399-399(2007).
Ross M.T., et al. Nature 434:325-337(2005).