

RPL29 Antibody (Center)
Affinity Purified Rabbit Polyclonal Antibody (Pab)
Catalog # AP20452c

Specification

RPL29 Antibody (Center) - Product Information

| | |
|-------------------|------------------------|
| Application | WB,E |
| Primary Accession | P47914 |
| Other Accession | Q8HXB8 |
| Reactivity | Human |
| Predicted | Monkey |
| Host | Rabbit |
| Clonality | Polyclonal |
| Isotype | Rabbit IgG |
| Calculated MW | 17752 |
| Antigen Region | 71-98 |

RPL29 Antibody (Center) - Additional Information

Gene ID 6159

Other Names

60S ribosomal protein L29, Cell surface heparin-binding protein HIP, RPL29

Target/Specificity

This RPL29 antibody is generated from rabbits immunized with a KLH conjugated synthetic peptide between 71-98 amino acids from the Central region of human RPL29.

Dilution

WB~~1:1000

Format

Purified polyclonal antibody supplied in PBS with 0.09% (W/V) sodium azide. This antibody is purified through a protein A column, followed by peptide affinity purification.

Storage

Maintain refrigerated at 2-8°C for up to 2 weeks. For long term storage store at -20°C in small aliquots to prevent freeze-thaw cycles.

Precautions

RPL29 Antibody (Center) is for research use only and not for use in diagnostic or therapeutic procedures.

RPL29 Antibody (Center) - Protein Information

Name RPL29

Function Component of the large ribosomal subunit (PubMed:[12962325](#), PubMed:[23636399](#),

PubMed:[32669547](#)). The ribosome is a large ribonucleoprotein complex responsible for the synthesis of proteins in the cell (PubMed:[12962325](#), PubMed:[23636399](#), PubMed:[32669547](#)).

Cellular Location

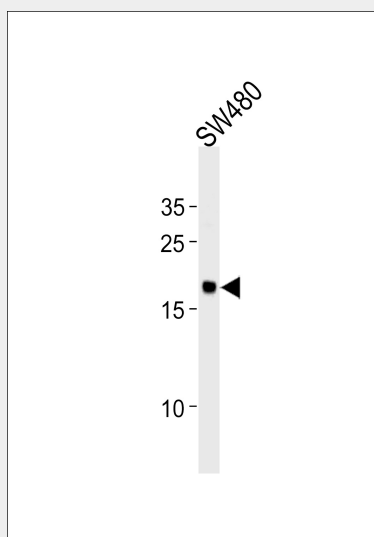
Cytoplasm.

RPL29 Antibody (Center) - Protocols

Provided below are standard protocols that you may find useful for product applications.

- [Western Blot](#)
- [Blocking Peptides](#)
- [Dot Blot](#)
- [Immunohistochemistry](#)
- [Immunofluorescence](#)
- [Immunoprecipitation](#)
- [Flow Cytometry](#)
- [Cell Culture](#)

RPL29 Antibody (Center) - Images



RPL29 Antibody (Center) (Cat. #AP20452c) western blot analysis in SW480 cell line lysates (35ug/lane). This demonstrates the RPL29 antibody detected the RPL29 protein (arrow).

RPL29 Antibody (Center) - References

- Law P.T., et al. Submitted (JUN-1994) to the EMBL/GenBank/DDBJ databases.
Law P.T., et al. Biochim. Biophys. Acta 1305:105-108(1996).
Liu S., et al. J. Biol. Chem. 271:11817-11823(1996).
Ota T., et al. Nat. Genet. 36:40-45(2004).
Odintsova T.I., et al. J. Protein Chem. 22:249-258(2003).

RPL29 Antibody (Center) - Citations

- [MYC-Mediated Ribosomal Gene Expression Sensitizes Enzalutamide-resistant Prostate Cancer Cells to EP300/CREBBP Inhibitors](#)
- [Knockdown RPL29 Gene Can Inhibit the Proliferation, Invasion of Squamous Cell Carcinomas.](#)