

**PTGER4 Antibody (Center)**  
**Affinity Purified Rabbit Polyclonal Antibody (Pab)**  
**Catalog # AP20451c**

## Specification

---

### PTGER4 Antibody (Center) - Product Information

Application	<b>WB, IHC-P,E</b>
Primary Accession	<a href="#">P35408</a>
Other Accession	<a href="#">P43114</a> , <a href="#">Q28691</a> , <a href="#">P32240</a> , <a href="#">Q8MJ08</a>
Reactivity	<b>Human, Mouse</b>
Predicted	<b>Bovine, Rabbit, Rat</b>
Host	<b>Rabbit</b>
Clonality	<b>Polyclonal</b>
Isotype	<b>Rabbit IgG</b>
Antigen Region	<b>242-269</b>

### PTGER4 Antibody (Center) - Additional Information

**Gene ID** 5734

#### Other Names

Prostaglandin E2 receptor EP4 subtype, PGE receptor EP4 subtype, PGE2 receptor EP4 subtype, Prostanoid EP4 receptor, PTGER4, PTGER2

#### Target/Specificity

This PTGER4 antibody is generated from rabbits immunized with a KLH conjugated synthetic peptide between 242-269 amino acids from the Central region of human PTGER4.

#### Dilution

WB~~1:1000  
IHC-P~~1:25

#### Format

Purified polyclonal antibody supplied in PBS with 0.09% (W/V) sodium azide. This antibody is purified through a protein A column, followed by peptide affinity purification.

#### Storage

Maintain refrigerated at 2-8°C for up to 2 weeks. For long term storage store at -20°C in small aliquots to prevent freeze-thaw cycles.

#### Precautions

PTGER4 Antibody (Center) is for research use only and not for use in diagnostic or therapeutic procedures.

### PTGER4 Antibody (Center) - Protein Information

**Name** PTGER4

## Synonyms PTGER2

**Function** Receptor for prostaglandin E2 (PGE2). The activity of this receptor is mediated by G(s) proteins that stimulate adenylate cyclase. Has a relaxing effect on smooth muscle. May play an important role in regulating renal hemodynamics, intestinal epithelial transport, adrenal aldosterone secretion, and uterine function.

## Cellular Location

Cell membrane; Multi-pass membrane protein.

## Tissue Location

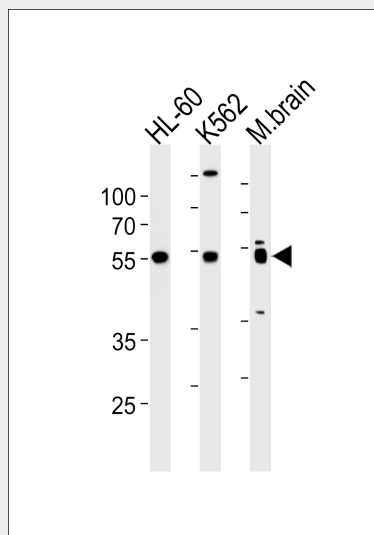
High in intestine and in peripheral blood mononuclear cells; low in lung, kidney, thymus, uterus, vasculature and brain. Not found in liver, heart, retina or skeletal muscle

## PTGER4 Antibody (Center) - Protocols

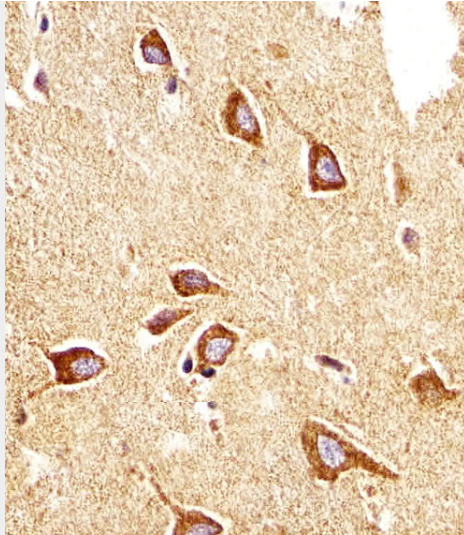
Provided below are standard protocols that you may find useful for product applications.

- [Western Blot](#)
- [Blocking Peptides](#)
- [Dot Blot](#)
- [Immunohistochemistry](#)
- [Immunofluorescence](#)
- [Immunoprecipitation](#)
- [Flow Cytometry](#)
- [Cell Culture](#)

## PTGER4 Antibody (Center) - Images



PTGER4 Antibody (Center) (Cat. #AP20451c) western blot analysis in HL-60, K562 cell line and mouse brain lysates (35ug/lane). This demonstrates the PTGER4 antibody detected the PTGER4 protein (arrow).



Immunohistochemical analysis of paraffin-embedded H. brain section using PTGER4 Antibody (Center)(Cat#AP20451c). AP20451c was diluted at 1:25 dilution. A undiluted biotinylated goat polyvalent antibody was used as the secondary, followed by DAB staining.

#### **PTGER4 Antibody (Center) - Background**

Receptor for prostaglandin E2 (PGE2). The activity of this receptor is mediated by G(s) proteins that stimulate adenylate cyclase. Has a relaxing effect on smooth muscle. May play an important role in regulating renal hemodynamics, intestinal epithelial transport, adrenal aldosterone secretion, and uterine function.

#### **PTGER4 Antibody (Center) - References**

Bastien L., et al. J. Biol. Chem. 269:11873-11877(1994).  
An S., et al. Biochem. Biophys. Res. Commun. 197:263-270(1993).  
Foord S.M., et al. Genomics 35:182-188(1996).  
Mori K., et al. J. Mol. Med. 74:333-336(1996).  
Kopatz S.A., et al. Submitted (OCT-2003) to the EMBL/GenBank/DDBJ databases.