

MAIP1 Antibody (C-term)
Affinity Purified Rabbit Polyclonal Antibody (Pab)
Catalog # AP20447b

Specification

MAIP1 Antibody (C-term) - Product Information

Application	WB,E
Primary Accession	Q8WWC4
Other Accession	Q6AY04 , Q8BHE8 , A3KN05
Reactivity	Human
Predicted	Bovine, Mouse, Rat
Host	Rabbit
Clonality	Polyclonal
Isotype	Rabbit IgG
Antigen Region	190-219

MAIP1 Antibody (C-term) - Additional Information

Gene ID 79568

Other Names

Uncharacterized protein C2orf47, mitochondrial, C2orf47

Target/Specificity

This C2orf47 antibody is generated from rabbits immunized with a KLH conjugated synthetic peptide between 190-219 amino acids from the C-terminal region of human C2orf47.

Dilution

WB~~1:1000

Format

Purified polyclonal antibody supplied in PBS with 0.09% (W/V) sodium azide. This antibody is purified through a protein A column, followed by peptide affinity purification.

Storage

Maintain refrigerated at 2-8°C for up to 2 weeks. For long term storage store at -20°C in small aliquots to prevent freeze-thaw cycles.

Precautions

MAIP1 Antibody (C-term) is for research use only and not for use in diagnostic or therapeutic procedures.

MAIP1 Antibody (C-term) - Protein Information

Name MAIP1 {ECO:0000303|PubMed:27642048, ECO:0000312|HGNC:HGNC:26198}

Function Promotes sorting of SMDT1/EMRE in mitochondria by ensuring its maturation (PubMed:[27642048](#)). Interacts with the transit peptide region of SMDT1/EMRE precursor protein in

the mitochondrial matrix, leading to protect it against protein degradation by YME1L1, thereby ensuring SMDT1/EMRE maturation by the mitochondrial processing peptidase (PMPCA and PMPCB) (PubMed:[27642048](#)).

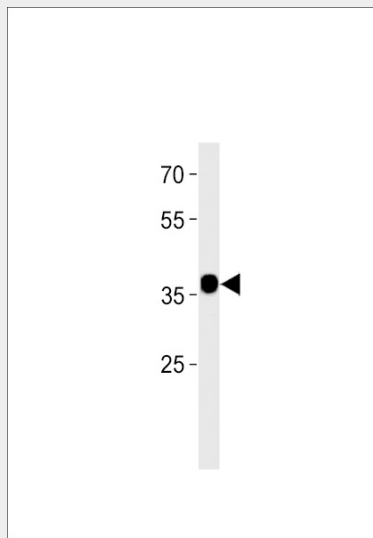
Cellular Location
Mitochondrion matrix

MAIP1 Antibody (C-term) - Protocols

Provided below are standard protocols that you may find useful for product applications.

- [Western Blot](#)
- [Blocking Peptides](#)
- [Dot Blot](#)
- [Immunohistochemistry](#)
- [Immunofluorescence](#)
- [Immunoprecipitation](#)
- [Flow Cytometry](#)
- [Cell Culture](#)

MAIP1 Antibody (C-term) - Images



C2orf47 Antibody (C-term) (Cat. #AP20447b) western blot analysis in MCF-7 cell line lysates (35ug/lane). This demonstrates the C2orf47 antibody detected the C2orf47 protein (arrow).

MAIP1 Antibody (C-term) - Background

The function of the C2orf47 protein is currently unknown.

MAIP1 Antibody (C-term) - References

- Ota T., et al. Nat. Genet. 36:40-45(2004).
Hillier L.W., et al. Nature 434:724-731(2005).
Mural R.J., et al. Submitted (JUL-2005) to the EMBL/GenBank/DDBJ databases.
Bechtel S., et al. BMC Genomics 8:399-399(2007).
Burkard T.R., et al. BMC Syst. Biol. 5:17-17(2011).