

GPR4 Antibody (Center)
Affinity Purified Rabbit Polyclonal Antibody (Pab)
Catalog # AP20446c

Specification

GPR4 Antibody (Center) - Product Information

Application	WB,E
Primary Accession	P46093
Other Accession	P50132
Reactivity	Human, Rat
Predicted	Pig
Host	Rabbit
Clonality	Polyclonal
Isotype	Rabbit IgG
Calculated MW	40982
Antigen Region	196-224

GPR4 Antibody (Center) - Additional Information

Gene ID 2828

Other Names

G-protein coupled receptor 4, G-protein coupled receptor 19, GPR4, GPR19

Target/Specificity

This GPR4 antibody is generated from rabbits immunized with a KLH conjugated synthetic peptide between 196-224 amino acids from the Central region of human GPR4.

Dilution

WB~~1:1000

Format

Purified polyclonal antibody supplied in PBS with 0.09% (W/V) sodium azide. This antibody is purified through a protein A column, followed by peptide affinity purification.

Storage

Maintain refrigerated at 2-8°C for up to 2 weeks. For long term storage store at -20°C in small aliquots to prevent freeze-thaw cycles.

Precautions

GPR4 Antibody (Center) is for research use only and not for use in diagnostic or therapeutic procedures.

GPR4 Antibody (Center) - Protein Information

Name GPR4

Function Proton-sensing G-protein coupled receptor couples to multiple intracellular signaling

pathways, including GNAS/cAMP, GNAQ/phospholipase C (PLC), and GNA12/GNA13/Rho pathways (PubMed:[12955148](#), PubMed:[17462861](#), PubMed:[20211729](#), PubMed:[22110680](#)). Acidosis-induced GPR4 activation increases paracellular gap formation and permeability of vascular endothelial cells through the GNA12/GNA13/Rho GTPase signaling pathway (PubMed:[32058960](#)). In the brain may mediate central respiratory sensitivity to CO(2)H(+) (By similarity).

Cellular Location

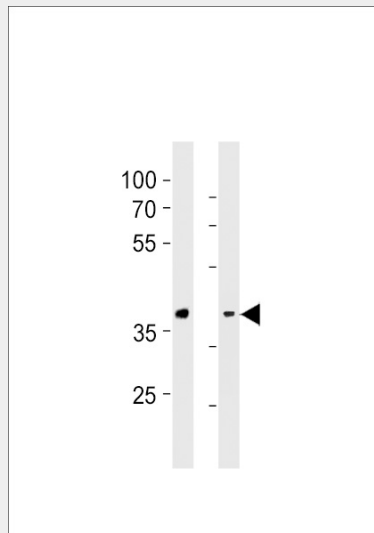
Cell membrane; Multi-pass membrane protein

GPR4 Antibody (Center) - Protocols

Provided below are standard protocols that you may find useful for product applications.

- [Western Blot](#)
- [Blocking Peptides](#)
- [Dot Blot](#)
- [Immunohistochemistry](#)
- [Immunofluorescence](#)
- [Immunoprecipitation](#)
- [Flow Cytometry](#)
- [Cell Culture](#)

GPR4 Antibody (Center) - Images



GPR4 Antibody (Center) (Cat. #AP20446c) western blot analysis in WiDr cell line and rat liver tissue lysates (35ug/lane). This demonstrates the GPR4 antibody detected the GPR4 protein (arrow).

GPR4 Antibody (Center) - Background

Proton-sensing receptor coupled to several G-proteins, including G(s), G(13) and G(q)/G(11) proteins, leading to cAMP production.

GPR4 Antibody (Center) - References

Heiber M., et al. DNA Cell Biol. 14:25-35(1995).
Mahadevan M.S., et al. Genomics 30:84-88(1995).

An S., et al. FEBS Lett. 375:121-124(1995).
Kaighin V.A., et al. Submitted (DEC-2007) to the EMBL/GenBank/DDBJ databases.
Ota T., et al. Nat. Genet. 36:40-45(2004).