

**FAM159A Antibody (Center)**  
**Affinity Purified Rabbit Polyclonal Antibody (Pab)**  
**Catalog # AP20445c**

**Specification**

---

**FAM159A Antibody (Center) - Product Information**

Application	IF, WB,E
Primary Accession	<a href="#">Q6UWV7</a>
Reactivity	Human, Mouse
Host	Rabbit
Clonality	Polyclonal
Isotype	Rabbit IgG
Calculated MW	20306
Antigen Region	89-115

**FAM159A Antibody (Center) - Additional Information**

**Gene ID** 348378

**Other Names**

Membrane protein FAM159A, FAM159A

**Target/Specificity**

This FAM159A antibody is generated from rabbits immunized with a KLH conjugated synthetic peptide between 89-115 amino acids from the Central region of human FAM159A.

**Dilution**

IF~~1:25

WB~~1:1000

**Format**

Purified polyclonal antibody supplied in PBS with 0.09% (W/V) sodium azide. This antibody is purified through a protein A column, followed by peptide affinity purification.

**Storage**

Maintain refrigerated at 2-8°C for up to 2 weeks. For long term storage store at -20°C in small aliquots to prevent freeze-thaw cycles.

**Precautions**

FAM159A Antibody (Center) is for research use only and not for use in diagnostic or therapeutic procedures.

**FAM159A Antibody (Center) - Protein Information**

**Name** SHISAL2A ([HGNC:28757](#))

**Synonyms** FAM159A

## Cellular Location

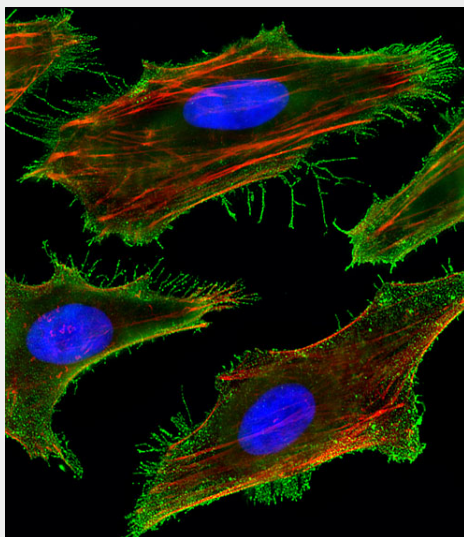
Membrane; Multi-pass membrane protein

## FAM159A Antibody (Center) - Protocols

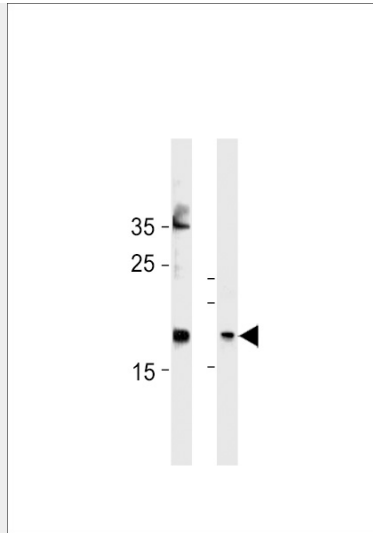
Provided below are standard protocols that you may find useful for product applications.

- [Western Blot](#)
- [Blocking Peptides](#)
- [Dot Blot](#)
- [Immunohistochemistry](#)
- [Immunofluorescence](#)
- [Immunoprecipitation](#)
- [Flow Cytometry](#)
- [Cell Culture](#)

## FAM159A Antibody (Center) - Images



Fluorescent image of HeLa cells stained with FAM159A Antibody (Center)(Cat#AP20445c). AP20445c was diluted at 1:25 dilution. An Alexa Fluor 488-conjugated goat anti-rabbit IgG at 1:400 dilution was used as the secondary antibody (green). DAPI was used to stain the cell nuclear (blue) . Cytoplasmic actin was counterstained with Alexa Fluor® 555 conjugated with Phalloidin (red).



FAM159A Antibody (Center) (Cat. #AP20445c) western blot analysis in Hela cell line and mouse bladder tissue lysates (35ug/lane). This demonstrates the FAM159A antibody detected the FAM159A protein (arrow).

#### **FAM159A Antibody (Center) - Background**

The exact function of this protein remains unknown.

#### **FAM159A Antibody (Center) - References**

- Clark H.F., et al. *Genome Res.* 13:2265-2270(2003).
- Ota T., et al. *Nat. Genet.* 36:40-45(2004).
- Mural R.J., et al. Submitted (SEP-2005) to the EMBL/GenBank/DDBJ databases.
- Gregory S.G., et al. *Nature* 441:315-321(2006).