

SEMA6B Antibody (C-term)
Affinity Purified Rabbit Polyclonal Antibody (Pab)
Catalog # AP20439b

Specification

SEMA6B Antibody (C-term) - Product Information

Application	WB,E
Primary Accession	O9H3T3
Reactivity	Human, Rat
Host	Rabbit
Clonality	Polyclonal
Isotype	Rabbit IgG
Calculated MW	95285
Antigen Region	830-859

SEMA6B Antibody (C-term) - Additional Information

Gene ID 10501

Other Names

Semaphorin-6B, Semaphorin-Z, Sema Z, SEMA6B, SEMAN, SEMAZ

Target/Specificity

This SEMA6B antibody is generated from rabbits immunized with a KLH conjugated synthetic peptide between 830-859 amino acids from the C-terminal region of human SEMA6B.

Dilution

WB~~1:1000

Format

Purified polyclonal antibody supplied in PBS with 0.09% (W/V) sodium azide. This antibody is purified through a protein A column, followed by peptide affinity purification.

Storage

Maintain refrigerated at 2-8°C for up to 2 weeks. For long term storage store at -20°C in small aliquots to prevent freeze-thaw cycles.

Precautions

SEMA6B Antibody (C-term) is for research use only and not for use in diagnostic or therapeutic procedures.

SEMA6B Antibody (C-term) - Protein Information

Name SEMA6B

Synonyms SEMAN, SEMAZ

Function Functions as a cell surface repellent for mossy fibers of developing neurons in the

hippocampus where it plays a role in axon guidance. May function through the PLXNA4 receptor expressed by mossy cell axons.

Cellular Location

Cell membrane; Single-pass type I membrane protein

Tissue Location

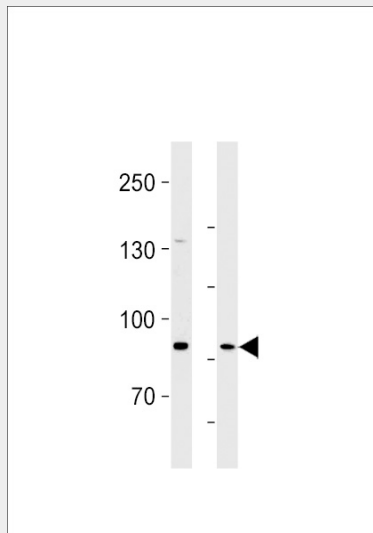
Expressed in the brain in GABAergic neurons.

SEMA6B Antibody (C-term) - Protocols

Provided below are standard protocols that you may find useful for product applications.

- [Western Blot](#)
- [Blocking Peptides](#)
- [Dot Blot](#)
- [Immunohistochemistry](#)
- [Immunofluorescence](#)
- [Immunoprecipitation](#)
- [Flow Cytometry](#)
- [Cell Culture](#)

SEMA6B Antibody (C-term) - Images



SEMA6B Antibody (C-term) (Cat. #AP20439b) western blot analysis in U87-MG cell line and rat brain lysates (35ug/lane). This demonstrates the SEMA6B antibody detected the SEMA6B protein (arrow).

SEMA6B Antibody (C-term) - Background

May play a role in both peripheral and central nervous system development (By similarity).

SEMA6B Antibody (C-term) - References

Kimura T., et al. Submitted (JAN-1999) to the EMBL/GenBank/DDBJ databases.
Correa R.G., et al. Genomics 73:343-348(2001).
Clark H.F., et al. Genome Res. 13:2265-2270(2003).

Mural R.J., et al. Submitted (SEP-2005) to the EMBL/GenBank/DDBJ databases.
Zhang Z., et al. Protein Sci. 13:2819-2824(2004).