

FBXO28 Antibody (C-term)
Affinity Purified Rabbit Polyclonal Antibody (Pab)
Catalog # AP20438b

Specification

FBXO28 Antibody (C-term) - Product Information

Application	WB,E
Primary Accession	O9NVF7
Other Accession	O8BIG4 , O2NL16
Reactivity	Human, Mouse
Predicted	Bovine
Host	Rabbit
Clonality	Polyclonal
Isotype	Rabbit IgG
Calculated MW	41149
Antigen Region	339-368

FBXO28 Antibody (C-term) - Additional Information

Gene ID 23219

Other Names

F-box only protein 28, FBXO28, KIAA0483

Target/Specificity

This FBXO28 antibody is generated from rabbits immunized with a KLH conjugated synthetic peptide between 339-368 amino acids from the C-terminal region of human FBXO28.

Dilution

WB~~1:1000

Format

Purified polyclonal antibody supplied in PBS with 0.09% (W/V) sodium azide. This antibody is purified through a protein A column, followed by peptide affinity purification.

Storage

Maintain refrigerated at 2-8°C for up to 2 weeks. For long term storage store at -20°C in small aliquots to prevent freeze-thaw cycles.

Precautions

FBXO28 Antibody (C-term) is for research use only and not for use in diagnostic or therapeutic procedures.

FBXO28 Antibody (C-term) - Protein Information

Name FBXO28

Synonyms CENP-30 {ECO:0000303|PubMed:20813266}, K

Function Probably recognizes and binds to some phosphorylated proteins and promotes their ubiquitination and degradation.

Cellular Location

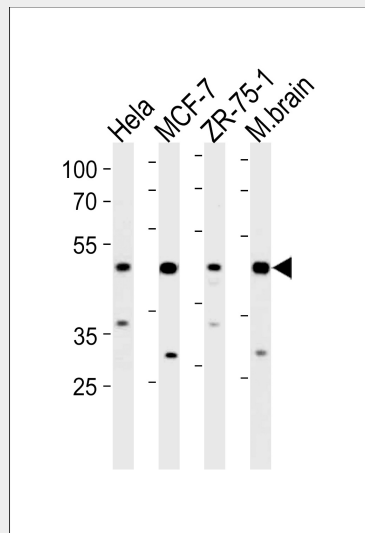
Chromosome, centromere, kinetochore

FBXO28 Antibody (C-term) - Protocols

Provided below are standard protocols that you may find useful for product applications.

- [Western Blot](#)
- [Blocking Peptides](#)
- [Dot Blot](#)
- [Immunohistochemistry](#)
- [Immunofluorescence](#)
- [Immunoprecipitation](#)
- [Flow Cytometry](#)
- [Cell Culture](#)

FBXO28 Antibody (C-term) - Images



FBXO28 Antibody (C-term) (Cat. #AP20438b) western blot analysis in HeLa, MCF-7, ZR-75-1 cell line and mouse brain lysates (35ug/lane). This demonstrates the FBXO28 antibody detected the FBXO28 protein (arrow).

FBXO28 Antibody (C-term) - Background

Probably recognizes and binds to some phosphorylated proteins and promotes their ubiquitination and degradation (By similarity).

FBXO28 Antibody (C-term) - References

Ota T., et al. Nat. Genet. 36:40-45(2004).
Gregory S.G., et al. Nature 441:315-321(2006).
Seki N., et al. DNA Res. 4:345-349(1997).
Olsen J.V., et al. Cell 127:635-648(2006).
Dephoure N., et al. Proc. Natl. Acad. Sci. U.S.A. 105:10762-10767(2008).