

**ZRSR2 Antibody (C-term)**  
**Affinity Purified Rabbit Polyclonal Antibody (Pab)**  
**Catalog # AP20436b**

**Specification**

---

**ZRSR2 Antibody (C-term) - Product Information**

Application	<b>WB, IHC-P,E</b>
Primary Accession	<a href="#">Q15696</a>
Reactivity	<b>Human</b>
Host	<b>Rabbit</b>
Clonality	<b>Polyclonal</b>
Isotype	<b>Rabbit IgG</b>
Antigen Region	<b>453-482</b>

**ZRSR2 Antibody (C-term) - Additional Information**

**Gene ID** 8233

**Other Names**

U2 small nuclear ribonucleoprotein auxiliary factor 35 kDa subunit-related protein 2, CCCH type zinc finger, RNA-binding motif and serine/arginine rich protein 2, Renal carcinoma antigen NY-REN-20, U2(RNU2) small nuclear RNA auxiliary factor 1-like 2, U2AF35-related protein, URP, ZRSR2, U2AF1-RS2, U2AF1L2, U2AF1RS2, URP

**Target/Specificity**

This ZRSR2 antibody is generated from rabbits immunized with a KLH conjugated synthetic peptide between 453-482 amino acids from the C-terminal region of human ZRSR2.

**Dilution**

WB~~1:1000  
IHC-P~~1:100

**Format**

Purified polyclonal antibody supplied in PBS with 0.09% (W/V) sodium azide. This antibody is purified through a protein A column, followed by peptide affinity purification.

**Storage**

Maintain refrigerated at 2-8°C for up to 2 weeks. For long term storage store at -20°C in small aliquots to prevent freeze-thaw cycles.

**Precautions**

ZRSR2 Antibody (C-term) is for research use only and not for use in diagnostic or therapeutic procedures.

**ZRSR2 Antibody (C-term) - Protein Information**

**Name** ZRSR2

**Synonyms** U2AF1-RS2, U2AF1L2, U2AF1RS2, URP

**Function** Pre-mRNA-binding protein required for splicing of both U2- and U12-type introns. Selectively interacts with the 3'-splice site of U2- and U12-type pre-mRNAs and promotes different steps in U2 and U12 intron splicing. Recruited to U12 pre-mRNAs in an ATP-dependent manner and is required for assembly of the prespliceosome, a precursor to other spliceosomal complexes. For U2-type introns, it is selectively and specifically required for the second step of splicing.

**Cellular Location**

Nucleus.

**Tissue Location**

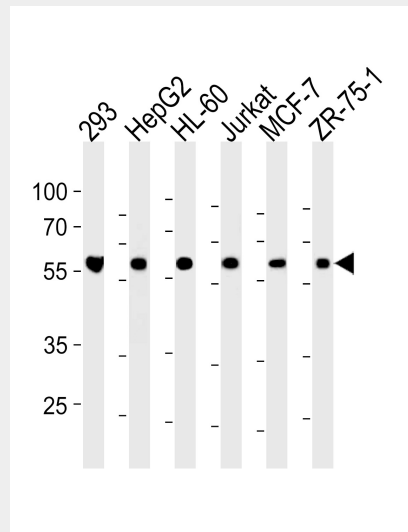
Widely expressed..

**ZRSR2 Antibody (C-term) - Protocols**

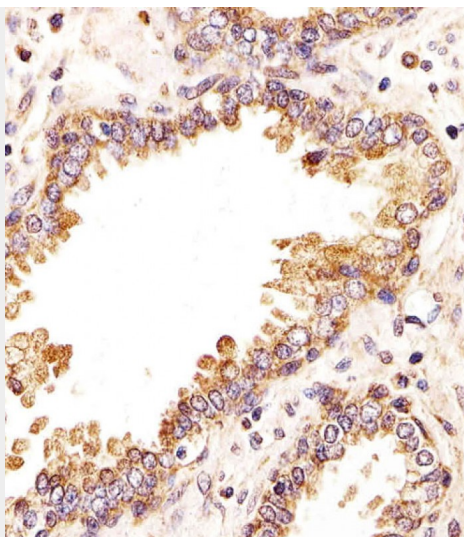
Provided below are standard protocols that you may find useful for product applications.

- [Western Blot](#)
- [Blocking Peptides](#)
- [Dot Blot](#)
- [Immunohistochemistry](#)
- [Immunofluorescence](#)
- [Immunoprecipitation](#)
- [Flow Cytometry](#)
- [Cell Culture](#)

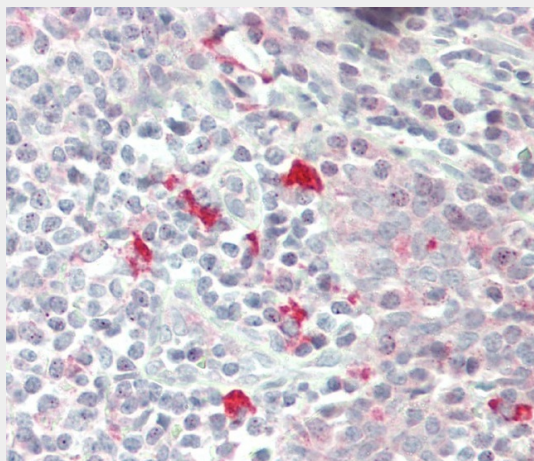
**ZRSR2 Antibody (C-term) - Images**



ZRSR2 Antibody (C-term) (Cat. #AP20436b) western blot analysis in 293,HepG2,HL-60,Jurkat,MCF-7,ZR-75-1 cell line lysates (35ug/lane).This demonstrates the ZRSR2 antibody detected the ZRSR2 protein (arrow).



Immunohistochemical analysis of paraffin-embedded H. prostate section using ZRSR2 Antibody (C-term)(Cat#AP20436b). AP20436b was diluted at 1:25 dilution. A undiluted biotinylated goat polyvalent antibody was used as the secondary, followed by DAB staining.



Formalin-fixed and paraffin-embedded H. tonsil tissue reacted with ZRSR2 Antibody (C-term) (Cat#AP20436b).

#### **ZRSR2 Antibody (C-term) - Background**

Pre-mRNA-binding protein required for splicing of both U2-and U12-type introns. Selectively interacts with the 3'-splice site of U2-and U12-type pre-mRNAs and promotes different steps in U2 and U12 intron splicing. Recruited to U12 pre-mRNAs in an ATP-dependent manner and is required for assembly of the prespliceosome, a precursor to other spliceosomal complexes. For U2-type introns, it is selectively and specifically required for the second step of splicing.

#### **ZRSR2 Antibody (C-term) - References**

- Kitagawa K., et al. Genomics 30:257-263(1995).
- Ross M.T., et al. Nature 434:325-337(2005).
- Tronchere H., et al. Nature 388:397-400(1997).
- Scanlan M.J., et al. Int. J. Cancer 83:456-464(1999).
- Will C.L., et al. RNA 10:929-941(2004).