

DNAAF8 Antibody (Center)
Affinity Purified Rabbit Polyclonal Antibody (Pab)
Catalog # AP20434c

Specification

DNAAF8 Antibody (Center) - Product Information

Application	WB,E
Primary Accession	Q8IYS4
Reactivity	Human
Host	Rabbit
Clonality	Polyclonal
Isotype	Rabbit IgG
Antigen Region	320-348

DNAAF8 Antibody (Center) - Additional Information

Gene ID 146562

Other Names

Uncharacterized protein C16orf71, C16orf71

Target/Specificity

This C16orf71 antibody is generated from rabbits immunized with a KLH conjugated synthetic peptide between 320-348 amino acids from the Central region of human C16orf71.

Dilution

WB~~1:1000

Format

Purified polyclonal antibody supplied in PBS with 0.09% (W/V) sodium azide. This antibody is purified through a protein A column, followed by peptide affinity purification.

Storage

Maintain refrigerated at 2-8°C for up to 2 weeks. For long term storage store at -20°C in small aliquots to prevent freeze-thaw cycles.

Precautions

DNAAF8 Antibody (Center) is for research use only and not for use in diagnostic or therapeutic procedures.

DNAAF8 Antibody (Center) - Protein Information

Name DNAAF8 ([HGNC:25081](#))

Function In ciliated cells, dynein axonemal particle-specific protein required for deployment of ODA to the axoneme. Interacts with outer dynein arm (ODA) subunits.

Cellular Location

Dynein axonemal particle

Tissue Location

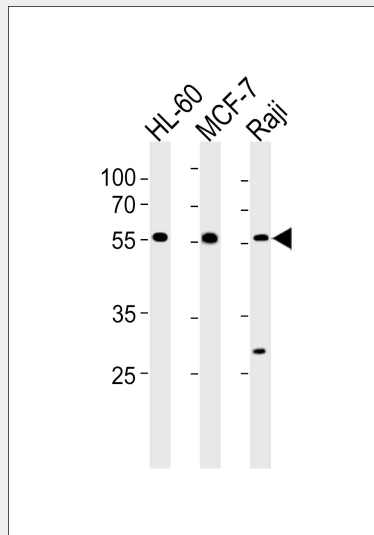
Expressed in respiratory ciliated cells (at protein level).

DNAAF8 Antibody (Center) - Protocols

Provided below are standard protocols that you may find useful for product applications.

- [Western Blot](#)
- [Blocking Peptides](#)
- [Dot Blot](#)
- [Immunohistochemistry](#)
- [Immunofluorescence](#)
- [Immunoprecipitation](#)
- [Flow Cytometry](#)
- [Cell Culture](#)

DNAAF8 Antibody (Center) - Images



C16orf71 Antibody (Center) (Cat. #AP20434c) western blot analysis in HL-60, MCF-7 and Raji cell line lysates (35ug/lane). This demonstrates the C16orf71 antibody detected the C16orf71 protein (arrow).

DNAAF8 Antibody (Center) - Background

The exact function of C16orf71 remains unknown.

DNAAF8 Antibody (Center) - References

Martin J., et al. Nature 432:988-994(2004).

Guo J.H., et al. Submitted (OCT-2001) to the EMBL/GenBank/DDBJ databases.