

**PITPNA Antibody (C-term)**  
**Affinity Purified Rabbit Polyclonal Antibody (Pab)**  
**Catalog # AP20431b**

**Specification**

---

**PITPNA Antibody (C-term) - Product Information**

Application	<b>WB, IHC-P,E</b>
Primary Accession	<a href="#">Q00169</a>
Other Accession	<a href="#">P16446</a> , <a href="#">P48738</a> , <a href="#">P53810</a> , <a href="#">Q2HJ54</a>
Reactivity	<b>Human, Mouse, Rat</b>
Predicted	<b>Bovine, Rabbit</b>
Host	<b>Rabbit</b>
Clonality	<b>Polyclonal</b>
Isotype	<b>Rabbit IgG</b>
Calculated MW	<b>31806</b>
Antigen Region	<b>243-270</b>

**PITPNA Antibody (C-term) - Additional Information**

**Gene ID** 5306

**Other Names**

Phosphatidylinositol transfer protein alpha isoform, PI-TP-alpha, PtdIns transfer protein alpha, PtdInsTP alpha, PITPNA, PITPN

**Target/Specificity**

This PITPNA antibody is generated from rabbits immunized with a KLH conjugated synthetic peptide between 243-270 amino acids from the C-terminal region of human PITPNA.

**Dilution**

WB~~1:2000  
IHC-P~~1:25

**Format**

Purified polyclonal antibody supplied in PBS with 0.09% (W/V) sodium azide. This antibody is purified through a protein A column, followed by peptide affinity purification.

**Storage**

Maintain refrigerated at 2-8°C for up to 2 weeks. For long term storage store at -20°C in small aliquots to prevent freeze-thaw cycles.

**Precautions**

PITPNA Antibody (C-term) is for research use only and not for use in diagnostic or therapeutic procedures.

**PITPNA Antibody (C-term) - Protein Information**

**Name** PITPNA

## Synonyms PITPN

**Function** Catalyzes the transfer of phosphatidylinositol (PI) and phosphatidylcholine (PC) between membranes (PubMed:[10531358](#), PubMed:[14962392](#), PubMed:[15522822](#), PubMed:[18636990](#), PubMed:[22822086](#)). Shows a preference for PI and PC containing shorter saturated or monosaturated acyl chains at the sn-1 and sn-2 positions (PubMed:[15522822](#), PubMed:[22822086](#)). Preference order for PC is C16:1 > C16:0 > C18:1 > C18:0 > C20:4 and for PI is C16:1 > C16:0 > C18:1 > C18:0 > C20:4 > C20:3 (PubMed:[22822086](#)).

## Cellular Location

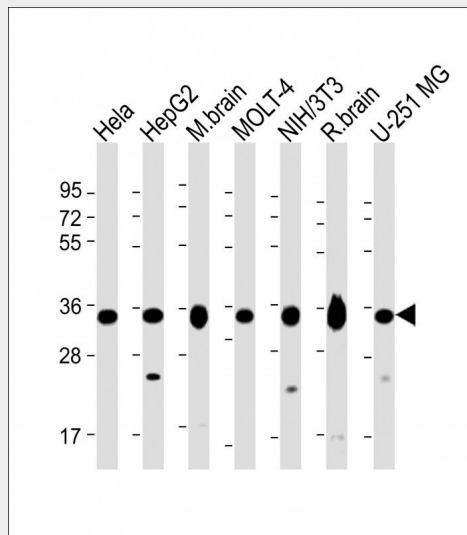
Cytoplasm {ECO:0000250|UniProtKB:P53810}. Nucleus {ECO:0000250|UniProtKB:P53810}

## PITPNA Antibody (C-term) - Protocols

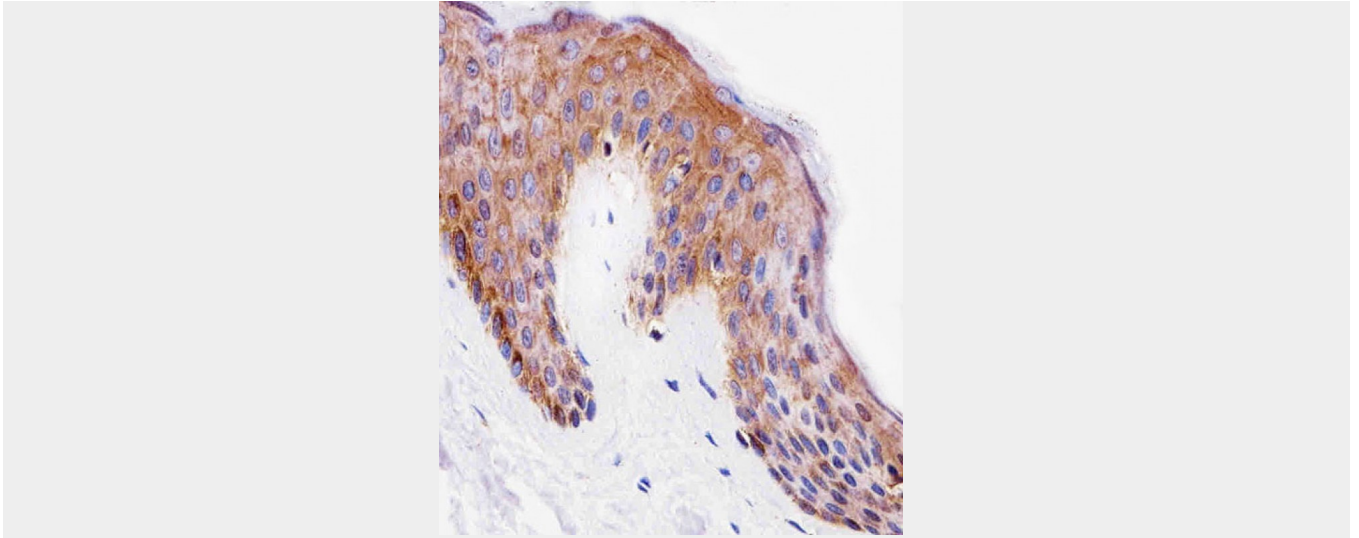
Provided below are standard protocols that you may find useful for product applications.

- [Western Blot](#)
- [Blocking Peptides](#)
- [Dot Blot](#)
- [Immunohistochemistry](#)
- [Immunofluorescence](#)
- [Immunoprecipitation](#)
- [Flow Cytometry](#)
- [Cell Culture](#)

## PITPNA Antibody (C-term) - Images



All lanes : Anti-PITPNA Antibody (C-term) at 1:2000 dilution Lane 1: HeLa whole cell lysate Lane 2: HepG2 whole cell lysate Lane 3: mouse brain lysate Lane 4: MOLT-4 whole cell lysate Lane 5: NIH/3T3 whole cell lysate Lane 6: rat brain lysate Lane 7: U-251 MG whole cell lysate Lysates/proteins at 20 µg per lane. Secondary Goat Anti-Rabbit IgG, (H+L), Peroxidase conjugated at 1/10000 dilution. Predicted band size : 32 kDa Blocking/Dilution buffer: 5% NFD/MBST.



Immunohistochemical analysis of paraffin-embedded H. skin section using PITPNA Antibody (C-term)(Cat#AP20431b). AP20431b was diluted at 1:25 dilution. A undiluted biotinylated goat polyvalent antibody was used as the secondary, followed by DAB staining.

#### **PITPNA Antibody (C-term) - Background**

Catalyzes the transfer of PtdIns and phosphatidylcholine between membranes.

#### **PITPNA Antibody (C-term) - References**

- Dickeson S.K., et al. Gene 142:301-305(1994).
- Tanaka S., et al. Submitted (NOV-1995) to the EMBL/GenBank/DDBJ databases.
- Lubec G., et al. Submitted (MAR-2007) to UniProtKB.
- Rikova K., et al. Cell 131:1190-1203(2007).
- Choudhary C., et al. Science 325:834-840(2009).