

**AGTR1 Antibody (C-term Y319)**  
**Affinity Purified Rabbit Polyclonal Antibody (Pab)**  
**Catalog # AP20429b****Specification**

---

**AGTR1 Antibody (C-term Y319) - Product Information**

Application	WB,E
Primary Accession	<a href="#">P30556</a>
Other Accession	<a href="#">P25095</a> , <a href="#">P29754</a> , <a href="#">P34976</a> , <a href="#">P30555</a> , <a href="#">P25104</a> , <a href="#">O77590</a>
Reactivity	Human
Predicted	Bovine, Pig, Rabbit, Sheep, Mouse, Rat
Host	Rabbit
Clonality	Polyclonal
Isotype	Rabbit IgG
Calculated MW	41061
Antigen Region	297-326

**AGTR1 Antibody (C-term Y319) - Additional Information**

**Gene ID** 185

**Other Names**

Type-1 angiotensin II receptor, AT1AR, AT1BR, Angiotensin II type-1 receptor, AT1, AGTR1, AGTR1A, AGTR1B, AT2R1, AT2R1B

**Target/Specificity**

This AGTR1 antibody is generated from rabbits immunized with a KLH conjugated synthetic peptide between 297-326 amino acids from the C-terminal region of human AGTR1.

**Dilution**

WB~~1:1000

**Format**

Purified polyclonal antibody supplied in PBS with 0.09% (W/V) sodium azide. This antibody is purified through a protein A column, followed by peptide affinity purification.

**Storage**

Maintain refrigerated at 2-8°C for up to 2 weeks. For long term storage store at -20°C in small aliquots to prevent freeze-thaw cycles.

**Precautions**

AGTR1 Antibody (C-term Y319) is for research use only and not for use in diagnostic or therapeutic procedures.

**AGTR1 Antibody (C-term Y319) - Protein Information**

**Name** AGTR1 ([HGNC:336](#))

**Function** Receptor for angiotensin II, a vasoconstricting peptide, which acts as a key regulator of blood pressure and sodium retention by the kidney (PubMed:[15611106](#), PubMed:[1567413](#), PubMed:[25913193](#), PubMed:[26420482](#), PubMed:[30639100](#), PubMed:[32079768](#), PubMed:[8987975](#)). The activated receptor in turn couples to G-alpha proteins G(q) (GNAQ, GNA11, GNA14 or GNA15) and thus activates phospholipase C and increases the cytosolic Ca(2+) concentrations, which in turn triggers cellular responses such as stimulation of protein kinase C (PubMed:[15611106](#)).

#### Cellular Location

Cell membrane; Multi-pass membrane protein

#### Tissue Location

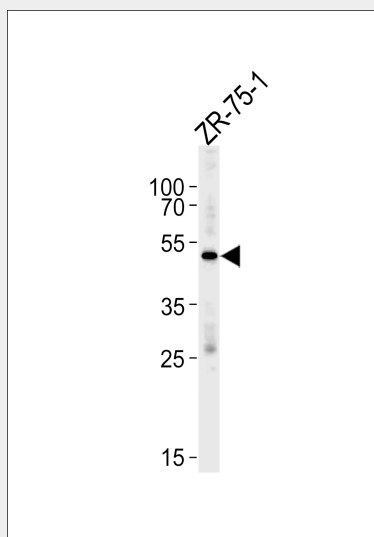
Liver, lung, adrenal and adrenocortical adenomas.

### AGTR1 Antibody (C-term Y319) - Protocols

Provided below are standard protocols that you may find useful for product applications.

- [Western Blot](#)
- [Blocking Peptides](#)
- [Dot Blot](#)
- [Immunohistochemistry](#)
- [Immunofluorescence](#)
- [Immunoprecipitation](#)
- [Flow Cytometry](#)
- [Cell Culture](#)

### AGTR1 Antibody (C-term Y319) - Images



AGTR1 Antibody (Y319) (Cat.# AP20429b) western blot analysis in ZR-75-1 cell line lysates (35ug/lane). This demonstrates the AGTR1 antibody detected the AGTR1 protein (arrow).

### AGTR1 Antibody (C-term Y319) - Background

Receptor for angiotensin II. Mediates its action by association with G proteins that activate a phosphatidylinositol-calcium second messenger system.