

**CCNB2 Antibody (Center S204)**  
**Affinity Purified Rabbit Polyclonal Antibody (Pab)**  
**Catalog # AP20413c**

**Specification**

---

**CCNB2 Antibody (Center S204) - Product Information**

Application	WB,E
Primary Accession	<a href="#">O95067</a>
Other Accession	<a href="#">Q4R7A8</a>
Reactivity	Human
Predicted	Monkey
Host	Rabbit
Clonality	Polyclonal
Isotype	Rabbit IgG
Calculated MW	45282
Antigen Region	182-209

**CCNB2 Antibody (Center S204) - Additional Information**

**Gene ID** 9133

**Other Names**

G2/mitotic-specific cyclin-B2, CCNB2

**Target/Specificity**

This CCNB2 antibody is generated from rabbits immunized with a KLH conjugated synthetic peptide between 182-209 amino acids from the Central region of human CCNB2.

**Dilution**

WB~~1:1000

**Format**

Purified polyclonal antibody supplied in PBS with 0.09% (W/V) sodium azide. This antibody is purified through a protein A column, followed by peptide affinity purification.

**Storage**

Maintain refrigerated at 2-8°C for up to 2 weeks. For long term storage store at -20°C in small aliquots to prevent freeze-thaw cycles.

**Precautions**

CCNB2 Antibody (Center S204) is for research use only and not for use in diagnostic or therapeutic procedures.

**CCNB2 Antibody (Center S204) - Protein Information**

**Name** CCNB2

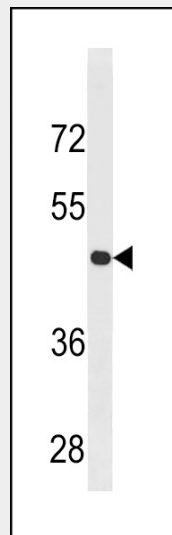
**Function** Essential for the control of the cell cycle at the G2/M (mitosis) transition.

## CCNB2 Antibody (Center S204) - Protocols

Provided below are standard protocols that you may find useful for product applications.

- [Western Blot](#)
- [Blocking Peptides](#)
- [Dot Blot](#)
- [Immunohistochemistry](#)
- [Immunofluorescence](#)
- [Immunoprecipitation](#)
- [Flow Cytometry](#)
- [Cell Culture](#)

## CCNB2 Antibody (Center S204) - Images



CCNB2 Antibody (Center S204) (Cat. #AP20413c) western blot analysis in U251 cell line lysates (35ug/lane). This demonstrates the CCNB2 antibody detected the CCNB2 protein (arrow).

## CCNB2 Antibody (Center S204) - Background

Essential for the control of the cell cycle at the G2/M (mitosis) transition.