

**CCNB1 Antibody (C-term T321)**  
**Affinity Purified Rabbit Polyclonal Antibody (Pab)**  
**Catalog # AP20411b****Specification**

---

**CCNB1 Antibody (C-term T321) - Product Information**

Application	WB,E
Primary Accession	<a href="#">P14635</a>
Other Accession	<a href="#">P30276</a> , <a href="#">Q4R7A8</a> , <a href="#">O95067</a> , <a href="#">O77689</a> , <a href="#">P30277</a> , <a href="#">P24860</a> , <a href="#">Q08301</a>
Reactivity	Human
Predicted	Hamster, Mouse, Rat, Bovine, Monkey
Host	Rabbit
Clonality	Polyclonal
Isotype	Rabbit IgG
Calculated MW	48337
Antigen Region	299-326

**CCNB1 Antibody (C-term T321) - Additional Information**

**Gene ID** 891

**Other Names**

G2/mitotic-specific cyclin-B1, CCNB1, CCNB

**Target/Specificity**

This CCNB1 antibody is generated from rabbits immunized with a KLH conjugated synthetic peptide between 299-326 amino acids from the C-terminal region of human CCNB1.

**Dilution**

WB~~1:1000

**Format**

Purified polyclonal antibody supplied in PBS with 0.09% (W/V) sodium azide. This antibody is purified through a protein A column, followed by peptide affinity purification.

**Storage**

Maintain refrigerated at 2-8°C for up to 2 weeks. For long term storage store at -20°C in small aliquots to prevent freeze-thaw cycles.

**Precautions**

CCNB1 Antibody (C-term T321) is for research use only and not for use in diagnostic or therapeutic procedures.

**CCNB1 Antibody (C-term T321) - Protein Information**

**Name** CCNB1

## Synonyms CCNB

**Function** Essential for the control of the cell cycle at the G2/M (mitosis) transition.

## Cellular Location

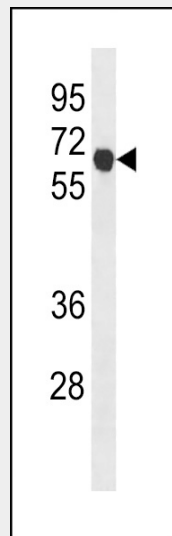
Cytoplasm. Nucleus. Cytoplasm, cytoskeleton, microtubule organizing center, centrosome

## CCNB1 Antibody (C-term T321) - Protocols

Provided below are standard protocols that you may find useful for product applications.

- [Western Blot](#)
- [Blocking Peptides](#)
- [Dot Blot](#)
- [Immunohistochemistry](#)
- [Immunofluorescence](#)
- [Immunoprecipitation](#)
- [Flow Cytometry](#)
- [Cell Culture](#)

## CCNB1 Antibody (C-term T321) - Images



CCNB1 Antibody (C-term T321) (Cat. #AP20411b) western blot analysis in K562 cell line lysates (35ug/lane). This demonstrates the CCNB1 antibody detected the CCNB1 protein (arrow).

## CCNB1 Antibody (C-term T321) - Background

Essential for the control of the cell cycle at the G2/M (mitosis) transition.