

CWC27 Antibody (C-term)
Affinity Purified Rabbit Polyclonal Antibody (Pab)
Catalog # AP20380b

Specification

CWC27 Antibody (C-term) - Product Information

Application	WB,E
Primary Accession	O6UX04
Other Accession	O4R713 , O17OX9
Reactivity	Human
Predicted	Bovine, Monkey
Host	Rabbit
Clonality	Polyclonal
Isotype	Rabbit IgG
Calculated MW	53847
Antigen Region	411-437

CWC27 Antibody (C-term) - Additional Information

Gene ID 10283

Other Names

Peptidyl-prolyl cis-trans isomerase CWC27 homolog, PPIase CWC27, Antigen NY-CO-10, Serologically defined colon cancer antigen 10, CWC27, SDCCAG10

Target/Specificity

This CWC27 antibody is generated from rabbits immunized with a KLH conjugated synthetic peptide between 411-437 amino acids from the C-terminal region of human CWC27.

Dilution

WB~~1:1000

Format

Purified polyclonal antibody supplied in PBS with 0.09% (W/V) sodium azide. This antibody is purified through a protein A column, followed by peptide affinity purification.

Storage

Maintain refrigerated at 2-8°C for up to 2 weeks. For long term storage store at -20°C in small aliquots to prevent freeze-thaw cycles.

Precautions

CWC27 Antibody (C-term) is for research use only and not for use in diagnostic or therapeutic procedures.

CWC27 Antibody (C-term) - Protein Information

Name CWC27 ([HGNC:10664](#))

Function As part of the spliceosome, plays a role in pre-mRNA splicing (PubMed:[29360106](#)). Probable inactive PPIase with no peptidyl-prolyl cis-trans isomerase activity (PubMed:[20676357](#)). As a component of the minor spliceosome, involved in the splicing of U12-type introns in pre-mRNAs (Probable).

Cellular Location

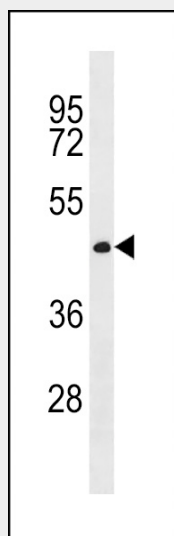
Nucleus.

CWC27 Antibody (C-term) - Protocols

Provided below are standard protocols that you may find useful for product applications.

- [Western Blot](#)
- [Blocking Peptides](#)
- [Dot Blot](#)
- [Immunohistochemistry](#)
- [Immunofluorescence](#)
- [Immunoprecipitation](#)
- [Flow Cytometry](#)
- [Cell Culture](#)

CWC27 Antibody (C-term) - Images



CWC27 Antibody (C-term) (Cat. #AP20380b) western blot analysis in MDA-MB453 cell line lysates (35ug/lane). This demonstrates the CWC27 antibody detected the CWC27 protein (arrow).

CWC27 Antibody (C-term) - Background

PPIases accelerate the folding of proteins (By similarity).